

Kontio Fine Living

Natural and healthy living. Finnish wellbeing. For all families. That is Kontio



KONTIO
LOGHOUSES





TO ENJOY THE PLEASANTNESS OF LOG HOUSE LIVING!

Kontio Fine Living brochure presents a wide variety of different log housing options for all kinds of families. Combination of tradition, high technology, ingenious structures and imagination is set in each Kontio Log House. They fit for each generation, to all cultures, into all kinds of environments – whether you prefer urban life or countryside. In our hands, the best arctic wood turns into a gorgeous log home. Kontio Log House stands for comfortable and ecological living. Massive wood construction functions as a carbon storage, thus reducing the carbon footprint of your living. Wood is also a natural material, which adapts very effectively to the variations of temperature, humidity and weather condition by equalising these factors. Kontio Log Houses are warm and airtight. The breathing structure of log provides an excellent indoor air quality helping you to breathe easier, sleep and feel better. Kontio Log House generates comfortable living in all seasons.



COMME

Kontiotuote Oy is the biggest log house manufacturer in the world. As raw material we use high-quality, close-grained arctic pine. All felled trees are re-planted, since we are responsible foresters. We produce over 2000 high-quality log buildings annually by making use of the latest research and production technology. Well planned and correctly built log house is strong and stable. That is why Finnish log houses are valued highly in all surroundings from the cold northern conditions to the southern seismic areas. The strength of Kontio lies in the mastery of the whole delivery chain.

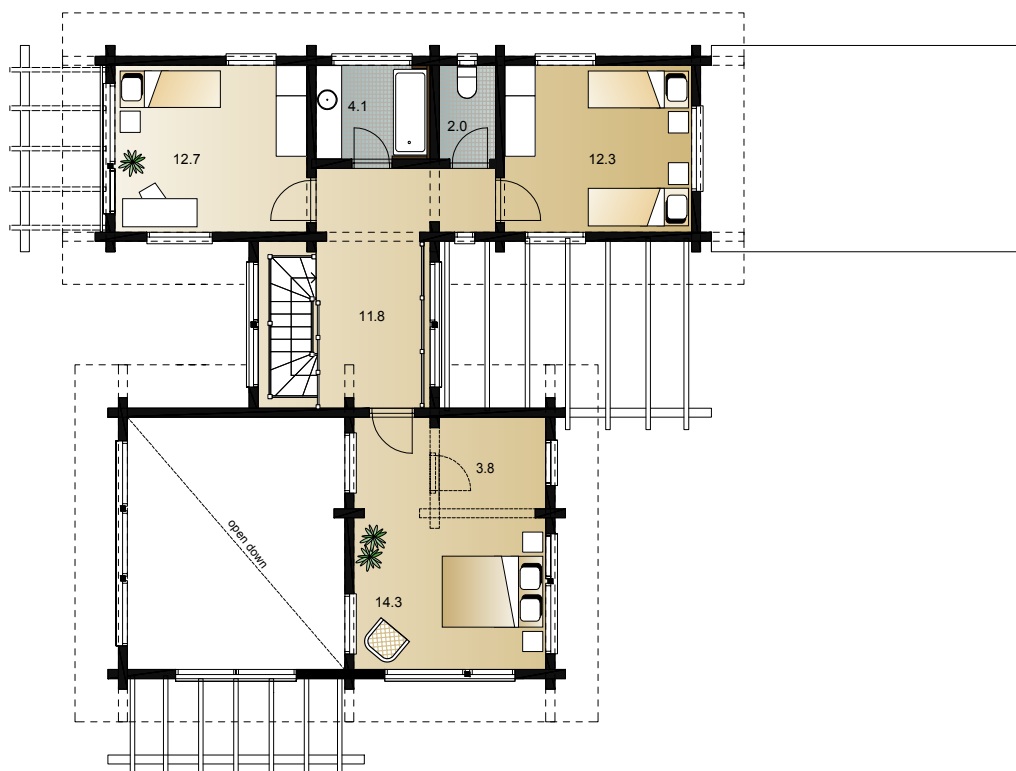


KONTIO GLADIOLUS



GROUND FLOOR 71.8 m² | TERRACE 31.8 m² | FIRST FLOOR 61.0 m² | CARPORT 21.7 m² | GARAGE 16.6 m²

Fresh view to log home design; Kontio Gladiolus stands for the rendezvous of the European architecture and Finnish log building technology. This dynamic complex combines the clearly separated common spaces for relaxation and recreation from the bedrooms providing peace and quiet, yet creating harmonious unity.



FIRST FLOOR 1:150

KONTIO GLADIOLUS



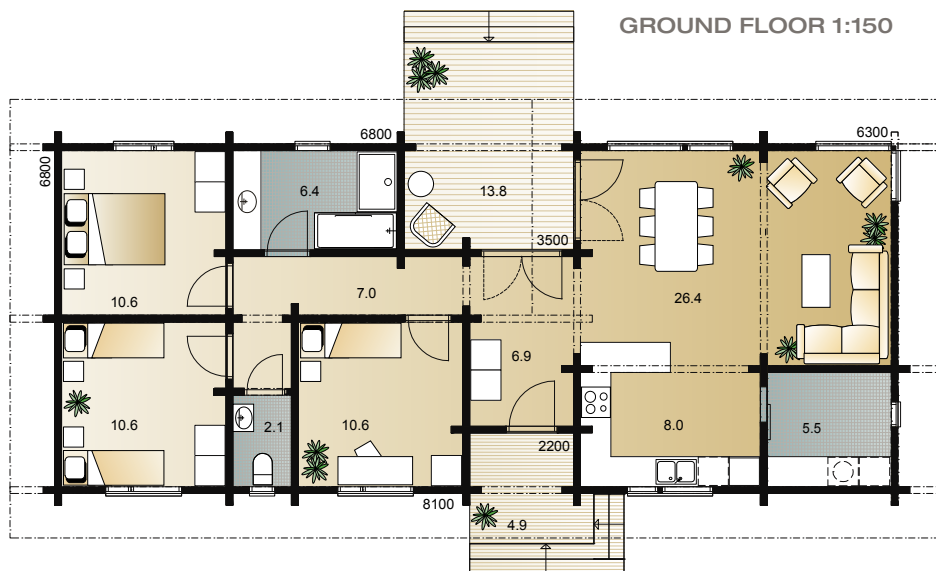
GROUND FLOOR 1:150

KONTIO FORTUNELLA



GROUND FLOOR 94.1 m² | TERRACE 18.7 m²

Kontio Fortunella and Adelia fit easily on smaller sites as well. Generous corner windows bring plenty of light into the high family area, in which the living and dining rooms are merged. The distinctive roof structure indicates modern Scandinavian style.

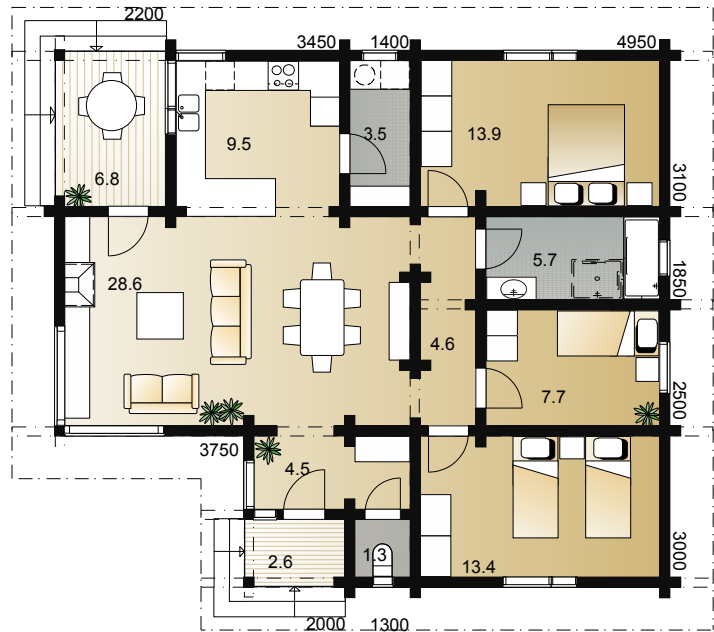


KONTIO
ADELIA



GROUND FLOOR 92.7 m² | TERRACE 9.4 m²

GROUND FLOOR 1:150



SEE MORE
SIMILAR MODELS
AT KONTIO.COM



APERTUS COLLECTION

All floor plans of Apertus Collection group the kitchen, living and dining rooms together in a single airy space. Daylight enters the room from the large windows letting the surrounding nature closer. The whole family can enjoy weather and seasonal changes comfortably from the cosy couch. Steep roof gives the building real posture and solid appearance.

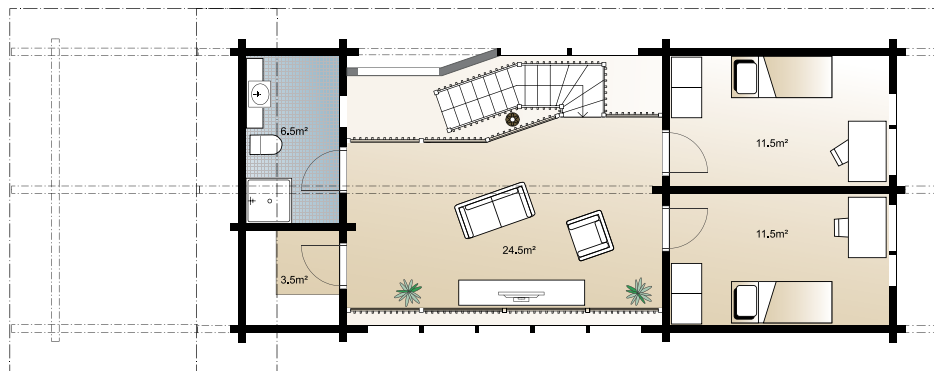


**KONTIO
APERTUS
EOS 115**

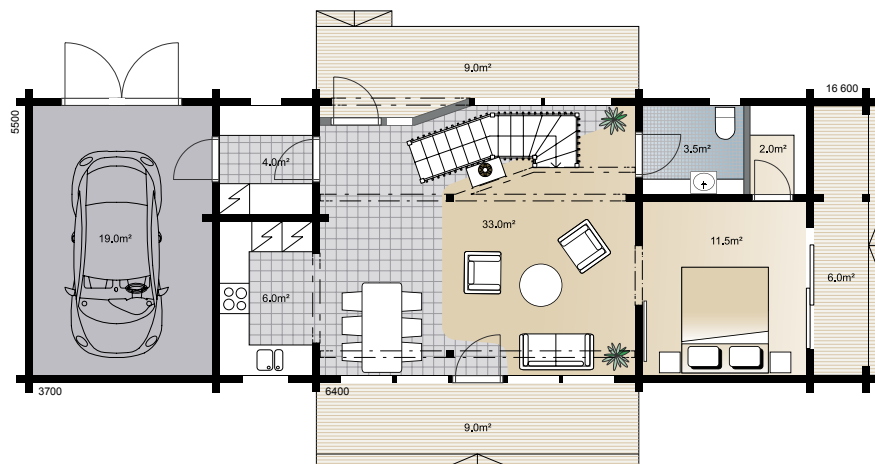


GROUND FLOOR 60 m² | TERRACE 24 m² | FIRST FLOOR 55 m² | GARAGE 19 m²

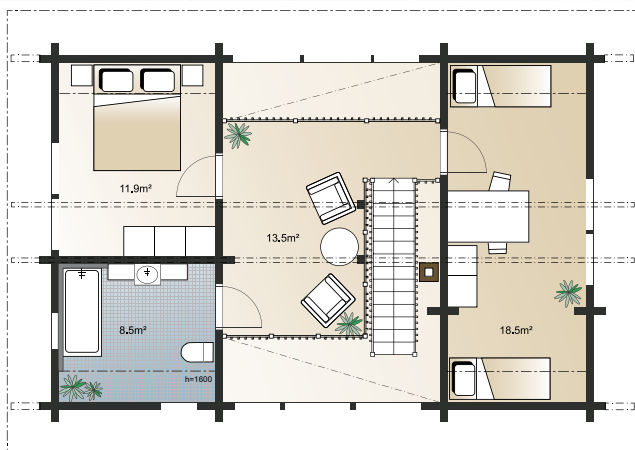
FIRST FLOOR 1:150



GROUND FLOOR 1:150



**KONTIO
APERTUS
LEO 118**



**GROUND FLOOR 65.8 m² | FIRST FLOOR 52.4 m²
TERRACE 10.2 m²**

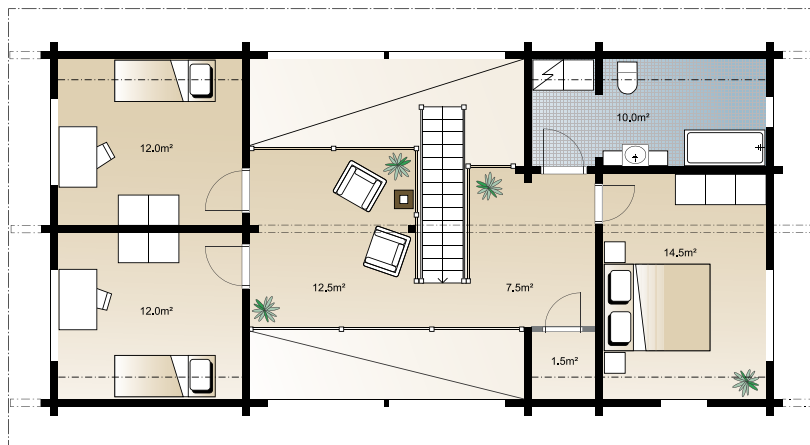
Apertus Leo 118 is a compact, clean lined house fitting well for even a smaller site. Extensive windows on the main façade side let the light delightfully in, whereas the well-designed hall area keeps the view private.

FIRST FLOOR 1:150



GROUND FLOOR 1:150

**KONTIO
APERTUS
VIS 161**



**GROUND FLOOR 91.0 m²
FIRST FLOOR 70.0 m²
TERRACE 19.0 m²**

Apertus Vis 161 is the most spacious of the three Apertus models. Its massive and sturdy appearance encloses plenty of room for even a larger family. See also variations with carport or garage on our website.

FIRST FLOOR 1:150



GROUND FLOOR 1:150

DELPHINIUM COLLECTION

Delphinium models have been designed for functional everyday life. These models are beautiful and unpretentious log houses. Floor plan solutions of Delphinium collection are simple and functional without any superfluous gimmickry.



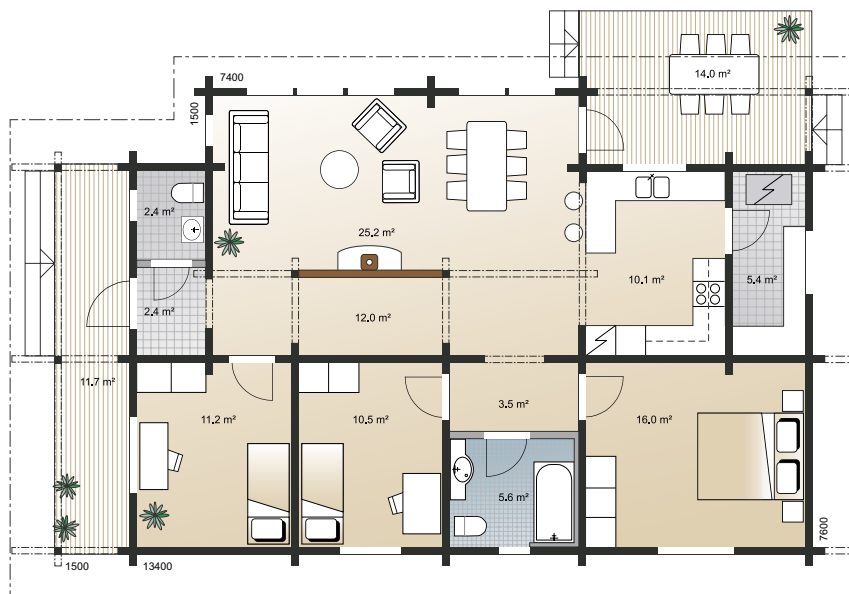
Whether you choose a rectangular or round log, the house will certainly look and feel homelike.

**KONTIO
DELPHINIUM
LEO 104**





GROUND FLOOR 104.5 m² | TERRACE 25.7 m²



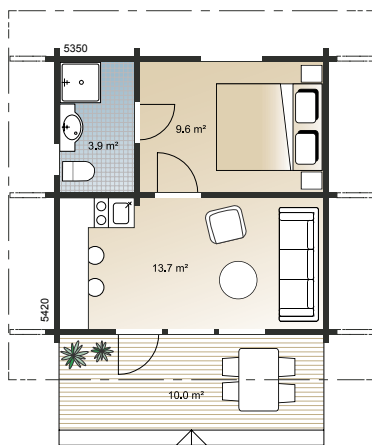
GROUND FLOOR 1:150

Delphinium Ago 75 is a sympathetic log house with a roomy, united kitchen, dining and living room area. From the Delphinium Collection you will also find simple and beautiful outdoor buildings to provide additional space for example for guests or hobbies. With additional buildings you can create your own world either at once or piece by piece.



**KONTIO
DELPHINIUM
GUESTHOUSE**

GROUND FLOOR 27.2 m² | TERRACE 10.0 m²



GROUND FLOOR 1:150





**KONTIO
DELPHINIUM
AGO 75**



GROUND FLOOR 75.6 m² | TERRACE 4.9 m²



GROUND FLOOR 1:150

KONTIO
NOWELLIA

LIVE ON A MOUNTAIN HILL

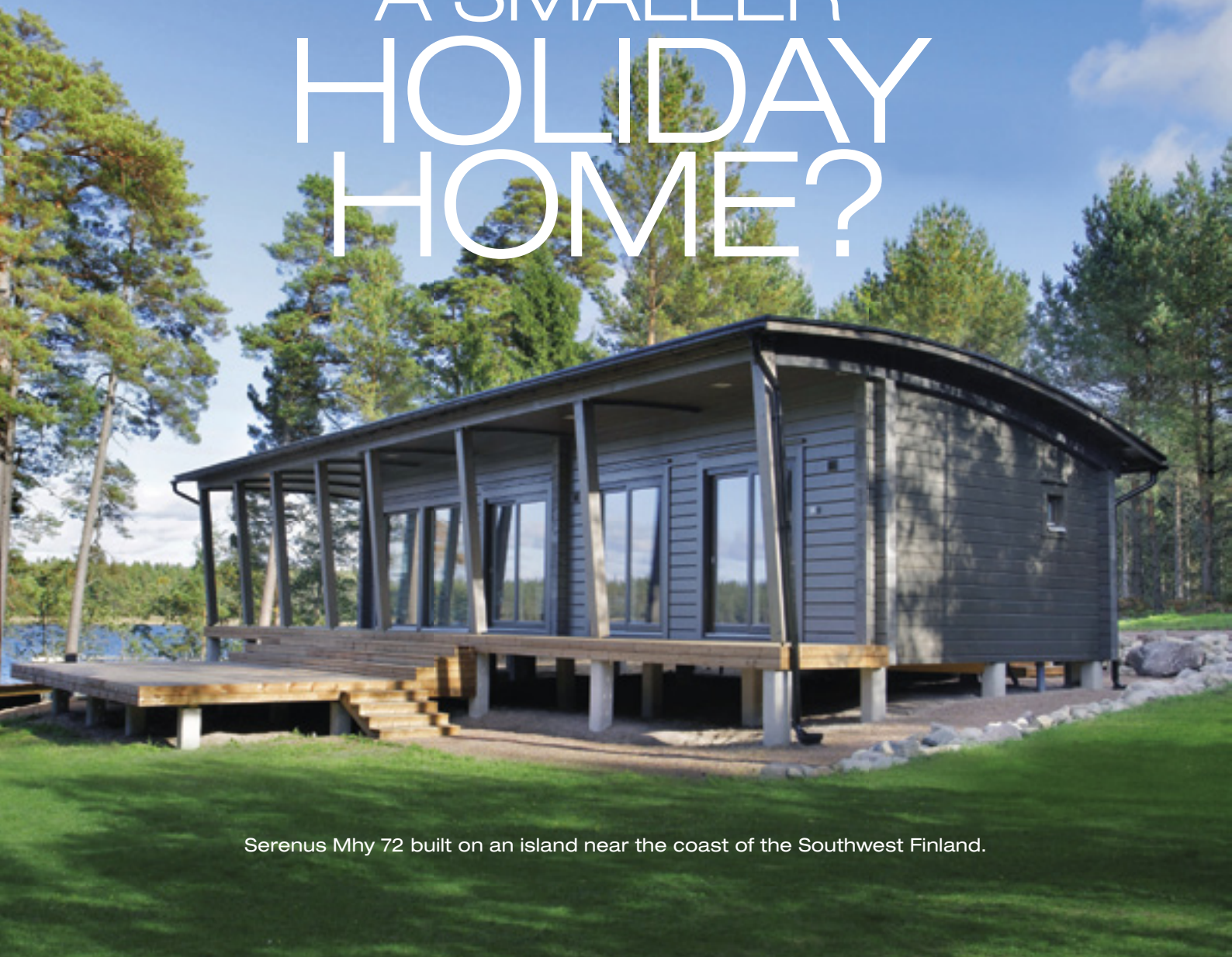
LIVE ON A MOUNTAIN HILL OR IN THE SUBURBS, FROM THE KONTIO COLLECTION YOU WILL FIND A HOME THAT BLENDS NICELY INTO THE SURROUNDINGS - OR STANDS OUT, IF YOU WISH!
ALTERNATING SHAPE OF EXTERIOR WALL HIGHLIGHTS THE ESSENCE OF NOWELLIA. SEEMINGLY SIMPLE FAÇADE ENCLOSES VARIETY OF ROOMS FOR DIVERSE PURPOSES. SEPARATE BATHROOM ADJOINING THE MASTER BEDROOM ADDS A TOUCH OF LUXURY.

GROUND FLOOR 89.6 m² | TERRACE 12.6 m²





LOOKING FOR A SMALLER HOLIDAY HOME?



Serenus Mhy 72 built on an island near the coast of the Southwest Finland.

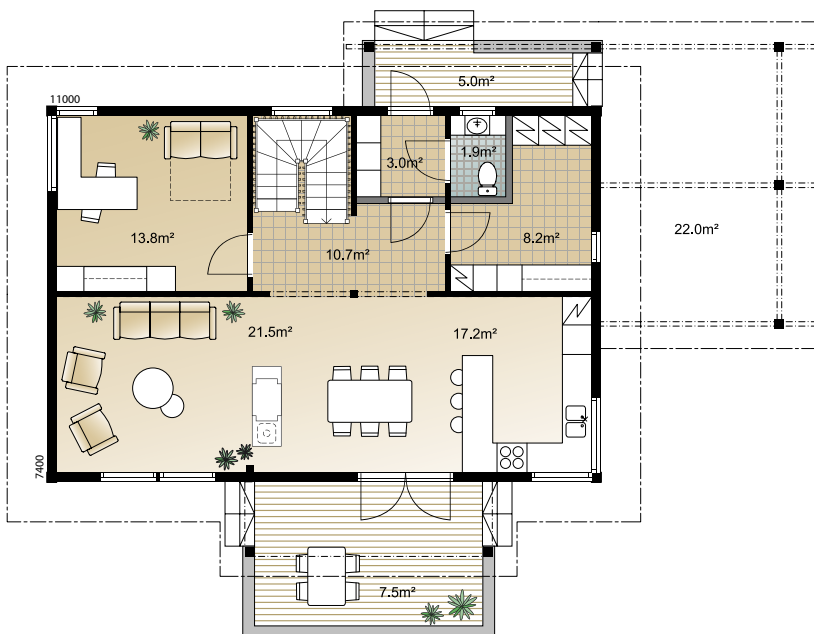


SCANDIUM COLLECTION

Inspired by the Scandinavian way of life

The traditional Scandinavian design is based on combining the new technologies and simplified beauty. Modern appearance of Scandium models makes it possible to build them on urban areas as well, where the conventional log house would not necessarily fit in.

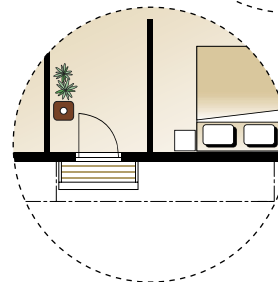
GROUND FLOOR 1:150



FIRST FLOOR 1:150



GROUND FLOOR 76.3 m² | FIRST FLOOR 70.9 m²
 TERRACE 18.5 m² | BALCONY 7.5/0.6 m² (CARPORT 22.0 m²)





**KONTIO
SCANDIUM
EOS 147**

Scandium Eos 147 has been differentiated into two separate variations. The more simplified version is spiced up with a lovely and convenient French balcony. The second version in turn provides more covered exterior space by means of a balcony and a carport.



**KONTIO
SCANDIUM
AGO 99**



GROUND FLOOR 99.3 m² | TERRACE 12.5 m²



This compact yet spacious home has everything essential for comfortable everyday life. The building process and use of the house have been facilitated by smart solutions, such as placing the rooms requiring water supply alongside and adding a good-sized hall area in the main entrance.

GROUND FLOOR 1:150

SCANDIUM COLLECTION STRUCTURES

When designing Scandium collection, a special attention has been paid to an easy and fast constructability. The models of Scandium collection are built by using a City corner solution, in which the exterior notches are replaced with special joints and covering boards. City corners go well with thinner interior log walls. Kontio technology enables using smaller log dimensions in interior walls with bigger, more massive exterior log walls. Thinner interior log walls are connected to exterior walls with dovetail joints. Dovetail joints leave no visible notches on exterior walls, thus giving the building an architectural clarity suitable for urban surroundings as well.

With Kontio solutions your home will definitely be airtight, warm and weatherproof.





**KONTIO
SCANDIUM
LEO 113**

**GROUND FLOOR 113.2 m²
TERRACE 14.0 m²**



Scandium Leo 113 conceals a plenty of functional space and beautiful details. The united kitchen, dining and living room are the centre of this home. This high family room area and the corridor are confined by the rhythmically repeated pillars, fireplace and horizontal beams, which are characteristic for log buildings and support the weight of the roof.

GROUND FLOOR 1:150



23



The traditional log house style fits this model as well. Regular notched log joints, wooden terrace railings and more decorative window architraves change the nature of the house at once.



MONARDA COLLECTION

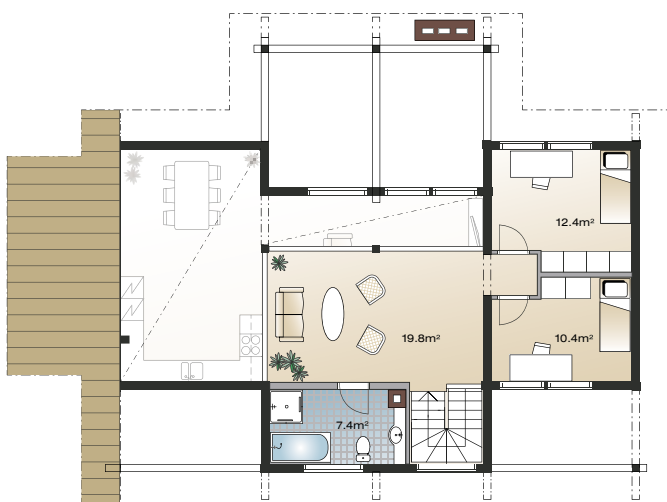
Monarda Collection consists of log houses with chic architecture that looks magnificent anywhere it is placed, whether in the Mediterranean or in the mountains. As mutual elements all Monarda models feature an access from living room to an ample, covered terrace through sliding doors. The window wall in the living room bounces light in and frames the surrounding scenery beautifully. Monarda models are delicate in appearance even in one and a half or two storey variations.

**KONTIO
MONARDA
EOS 143**

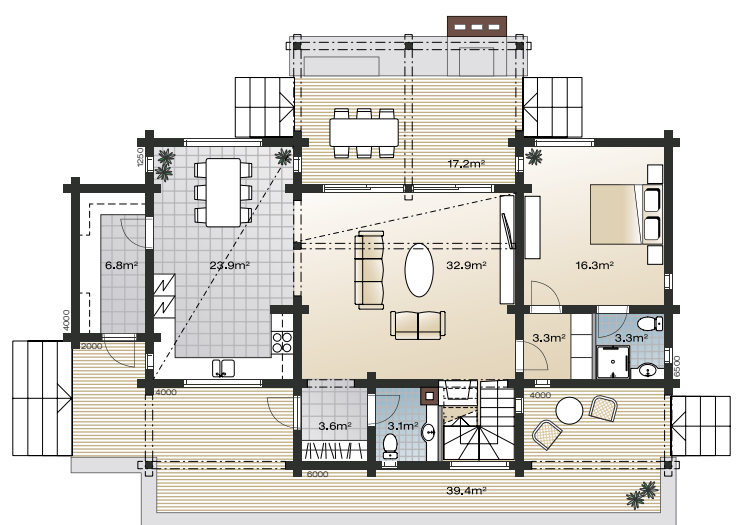


GROUND FLOOR 93.2 m² | FIRST FLOOR 50.0 m² | TERRACE 56.5 m²

In this two storey Monarda home the children's bedrooms have been located upstairs and the master bedroom with a separate bathroom downstairs. Built-in fireplace on back terrace brings little luxury for day-to-day life.



FIRST FLOOR 1:200



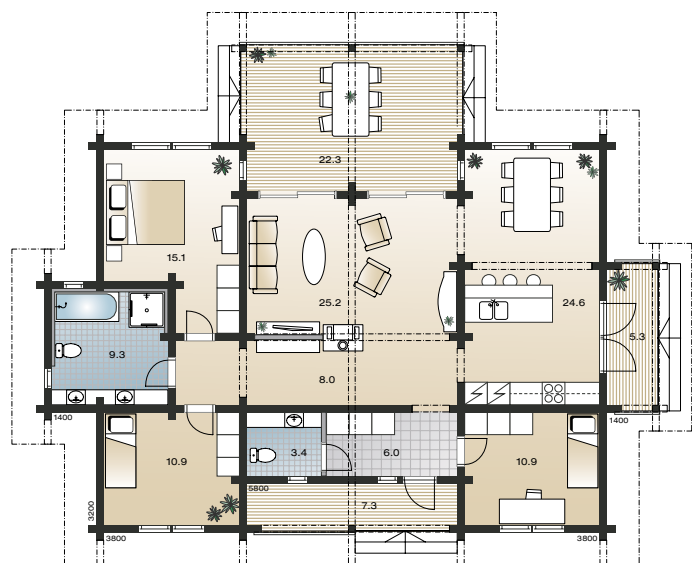
GROUND FLOOR 1:200

**KONTIO
MONARDA
EOS 113**



GROUND FLOOR 113.4 m² | TERRACE 34.9 m²

Single storey Monarda Eos 113 fits well for a family of average size. This home has three bedrooms, a roomy bathroom and a fireplace in centre of the living room to draw the attention. The adjoined kitchen and living room area can be divided with a kitchen island, whereas the double doors lead the way out from the kitchen. Terraces are equipped with picket railings providing more privacy for the main entrance.



GROUND FLOOR 1:200

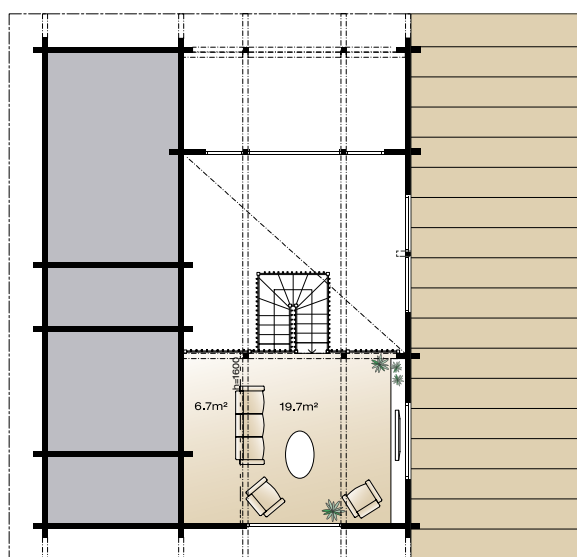


**KONTIO
MONARDA
LUX 161**

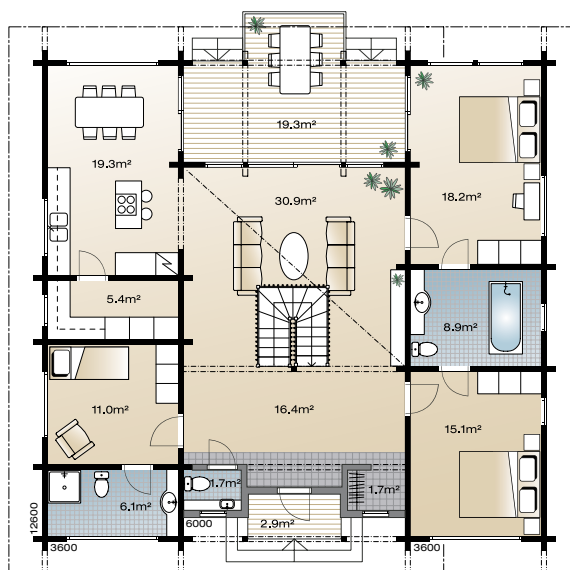


GROUND FLOOR 134.7 m² | FIRST FLOOR 26.4 (h>1.6m 6.7) m² | TERRACE 22.2 m²

One and a half storey Monarda Lux 161 provides plenty of space for enjoying the daily life with family and friends. The house plan is easily varied by changing the place of interior walls of bedrooms on both sides of the house. The large loft area upstairs brings additional comfort as being perfect place for relaxation.



FIRST FLOOR 1:200



GROUND FLOOR 1:200



THERE ARE ENDLESS POSSIBILITIES

CREATING A UNIQUE INTERIOR FOR YOUR LOG HOME.
HERE ARE FEW IDEAS.



THE USE OF WHITE SCANDINAVIAN STYLE NOT ONLY MAKES THE LIVING AREA LOOK BIGGER AND AIRIER, IT ALSO PROVIDES A CLEAN CANVAS FOR SHOWCASING OTHER ELEMENTS TO CREATE INVITING, ENCHANTING AND FUNCTIONAL SPACE. WARM WOOD AND COLOUR FINISHES LOOK RICHER AGAINST WHITE; PRINTED FABRICS POP EVEN MORE.



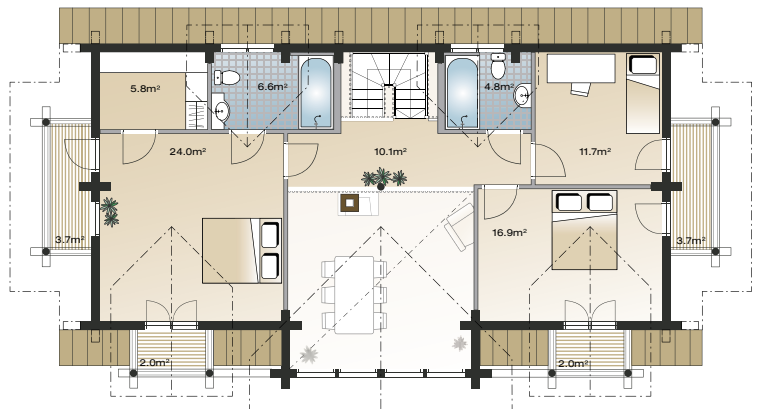
LOG FITS PERFECTLY WITH OTHER NATURAL MATERIALS; OAK AND LEATHER FURNITURE COMBINED WITH LINEN BLANKET ADD A TOUCH OF NATURAL COMFORT. TURQUOISE COUCH AND CONTEMPORARY PENDANT LIGHTS COMPLETE THE COLOUR PALETTE, WHEREAS LARGE WINDOWS CREATE IMPRESSIVE FOCAL POINT FOR THIS LIVING ROOM.



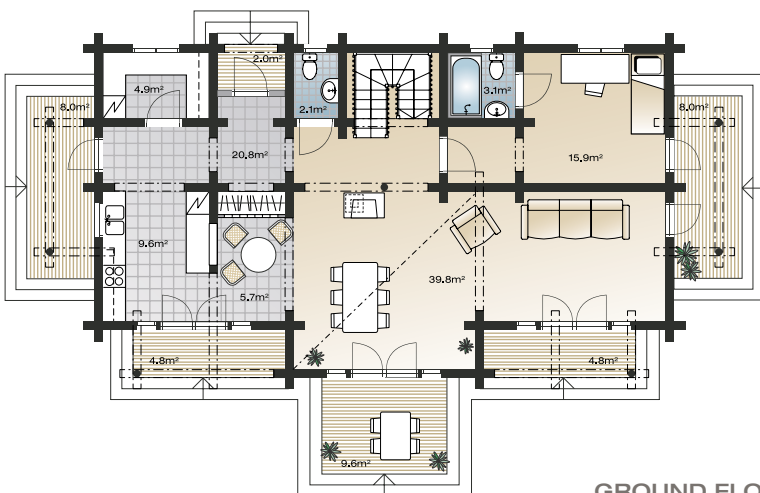


GROUND FLOOR 101.9 m² | FIRST FLOOR 79.9 m²
TERRACE 37.2 m² | BALCONY 11.4 m²

Round log is usually thought to represent a classic, more rustic style. This Kontio model shows, however, that round log can also be elegant and up-to-date.



FIRST FLOOR 1:200



GROUND FLOOR 1:200

A photograph showing the interior of a log cabin. On the left, a tall, narrow stainless steel refrigerator stands against a wall of horizontal log siding. To the right, a kitchen area features wooden cabinets, a countertop with a sink, and built-in ovens. In the foreground, a round wooden dining table is set with two upholstered chairs. A stained glass pendant lamp hangs above the table. The overall atmosphere is warm and rustic.

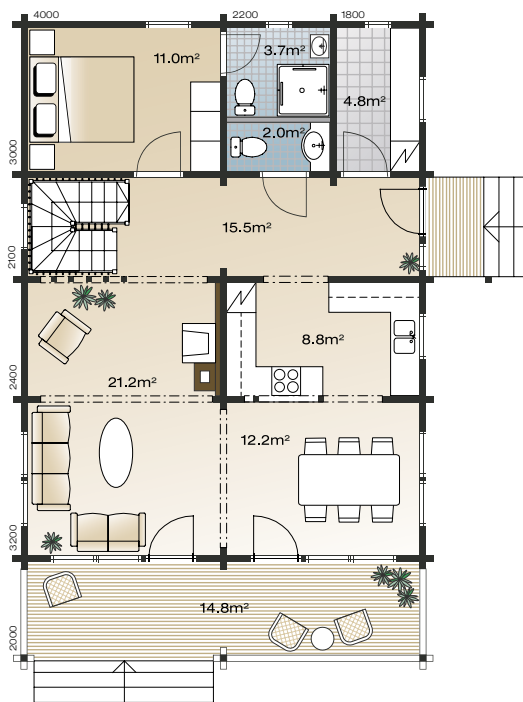
KONTIO ANGELICA 2

Even though we offer a wide range of contemporary style homes we still appreciate the beauty of classic and rustic log houses. Wooden tones and abundant round shapes create very decorative appearance.

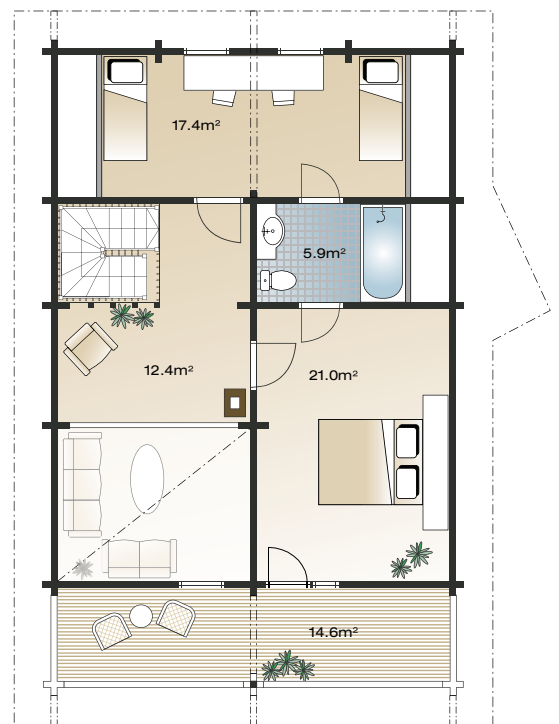




GROUND FLOOR
 79.2 m²
FIRST FLOOR
 56.7 m²
TERRACE
 14.8 m²
BALCONY
 14.6 m²



GROUND FLOOR 1:150



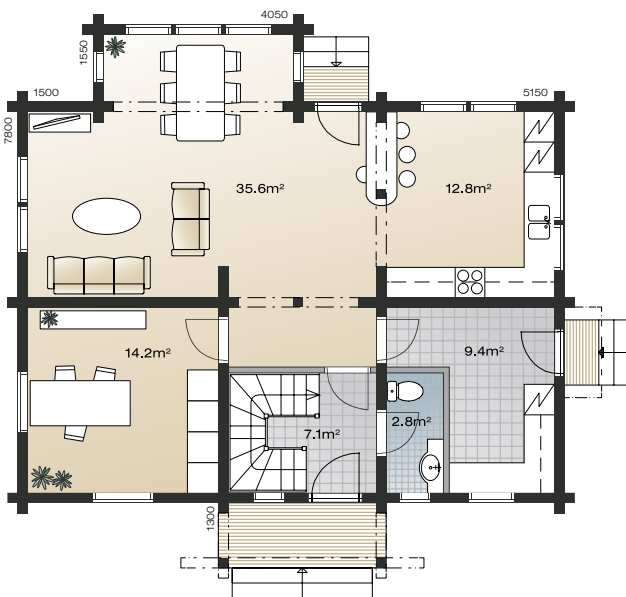
FIRST FLOOR 1:150



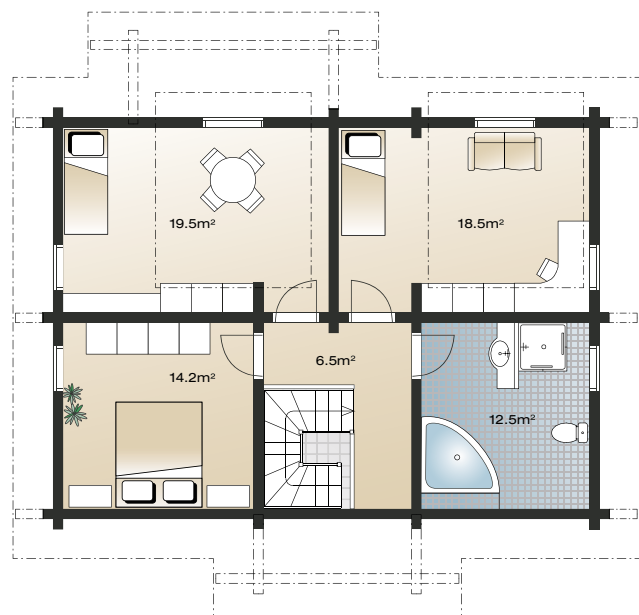
GROUND FLOOR 81.9 m² | FIRST FLOOR 71.2 m²

This house model typifies the practical Central European building style and floor plan solution; all room space is in effective use. The traditional appearance has been contrasted with distinctive dormer windows, which allow more light and create more space in the rooms upstairs.

GROUND FLOOR 1:150



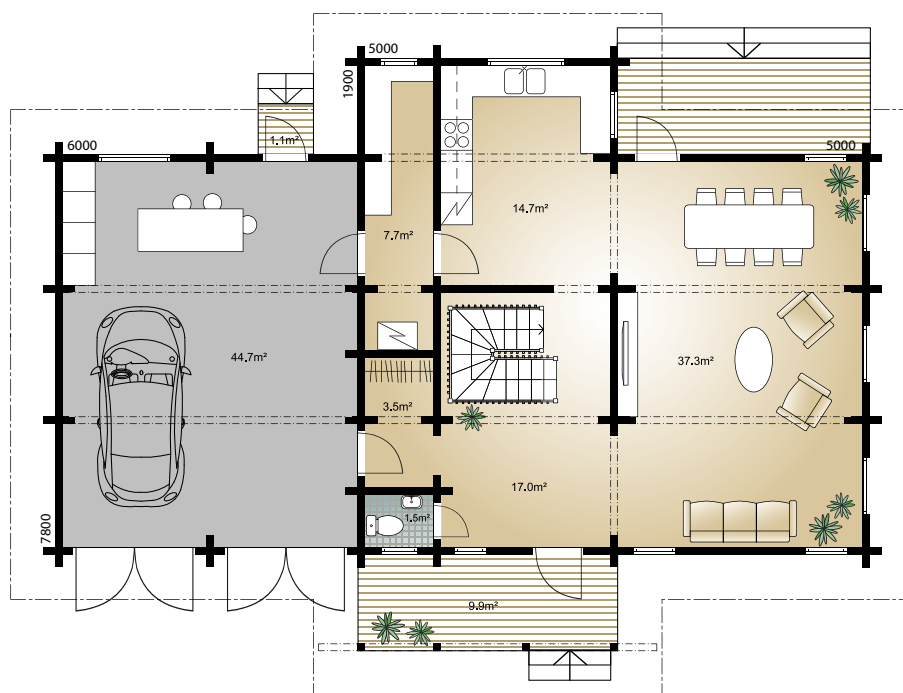
FIRST FLOOR 1:150



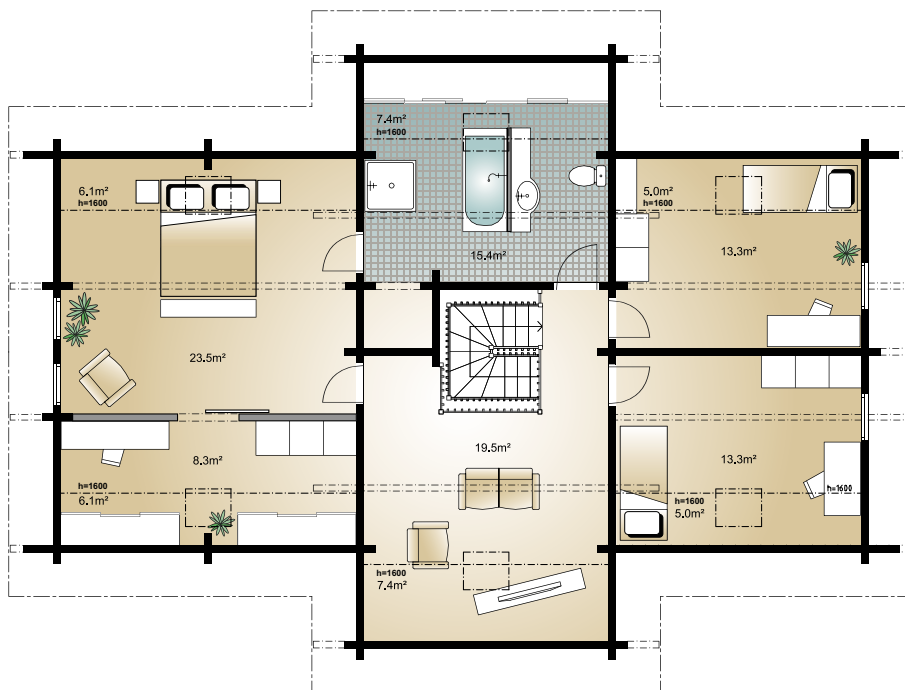




GROUND FLOOR 81.7 m² | FIRST FLOOR 122.0 (h>1.6m 85.0) m² | TERRACE 20.5 m² | GARAGE 44.7 m²



GROUND FLOOR 1:150



Allium is a spacious home with a fair-sized garage, with a room for handicrafts, for example. Steep, multi-level roof adds a touch of picturesque charm in the appearance. Upstairs consists of a luxurious master bedroom, adjoined bathroom and separate dressing room. Large living room downstairs provides scenery in three directions.

FIRST FLOOR 1:150



**KONTIO
RIVER-
HOUSE 1**

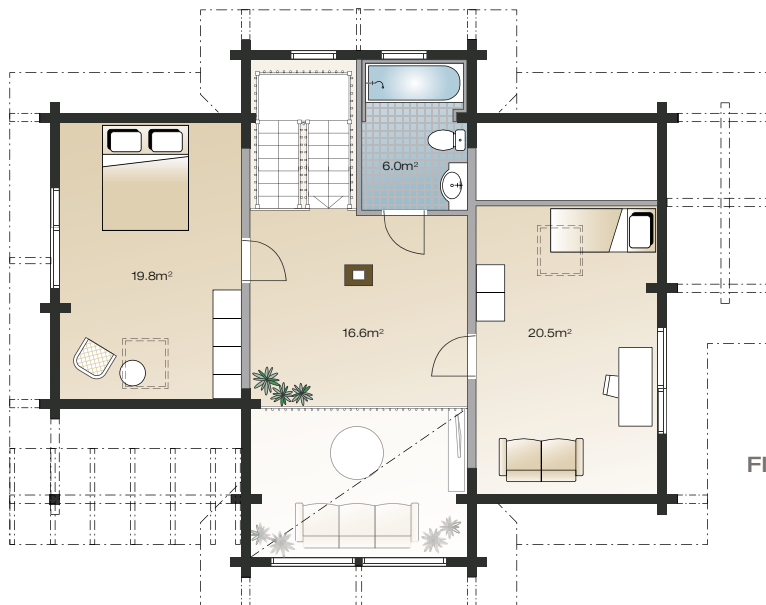
GROUND FLOOR 88.2 m² | FIRST FLOOR 62.9 m² | TERRACE 23.7 m²

GROUND FLOOR 1:150





IF YOU NEED
MORE SPACE,
SEE RIVERHOUSE 2
AT KONTIO.COM.



FIRST FLOOR 1:150

Riverhouse 1 is a classic beauty. In this model, the true essence of a log house is wrapped up in a harmonious package. The bright kitchen and living room both provide direct access to a sizeable terrace.



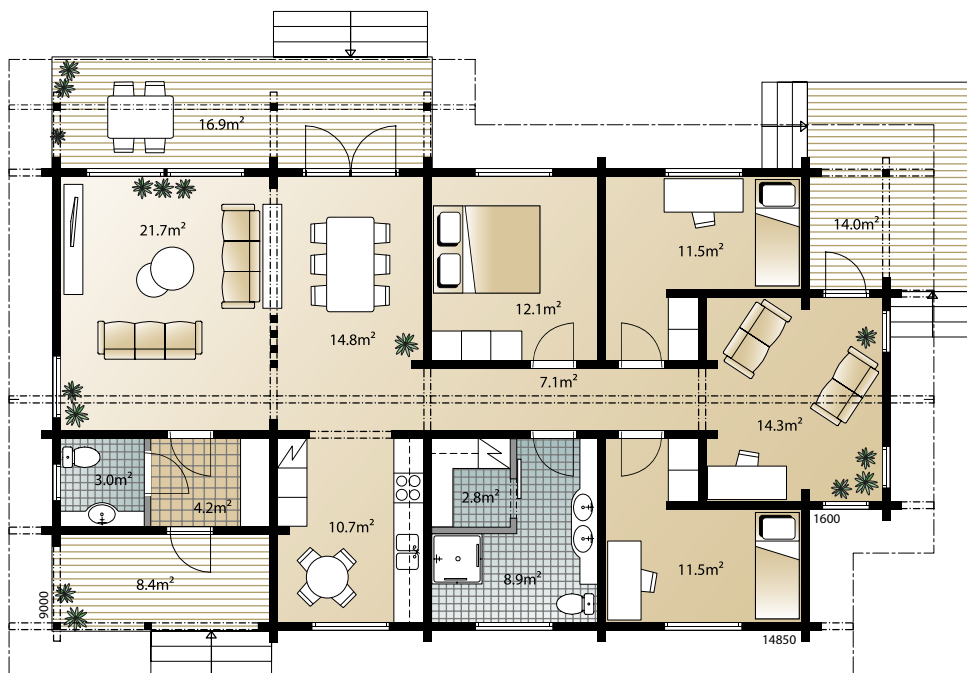
SENSUS COLLECTION

The leading idea behind the Sensus Collection has been the enjoyment of everyday life with all senses. Large living spaces, big windows and daylight streaming through the entire house bring luxury to the daily life.

**KONTIO
SENSUS
AGO 122**



GROUND FLOOR 122.6 m² | TERRACE 39.3 m²



On the outside, there are indications of both traditional and modern log house styles. Pillars that resemble a folding fan give these personal Sensus homes very unique and inimitable appearance.

GROUND FLOOR 1:150

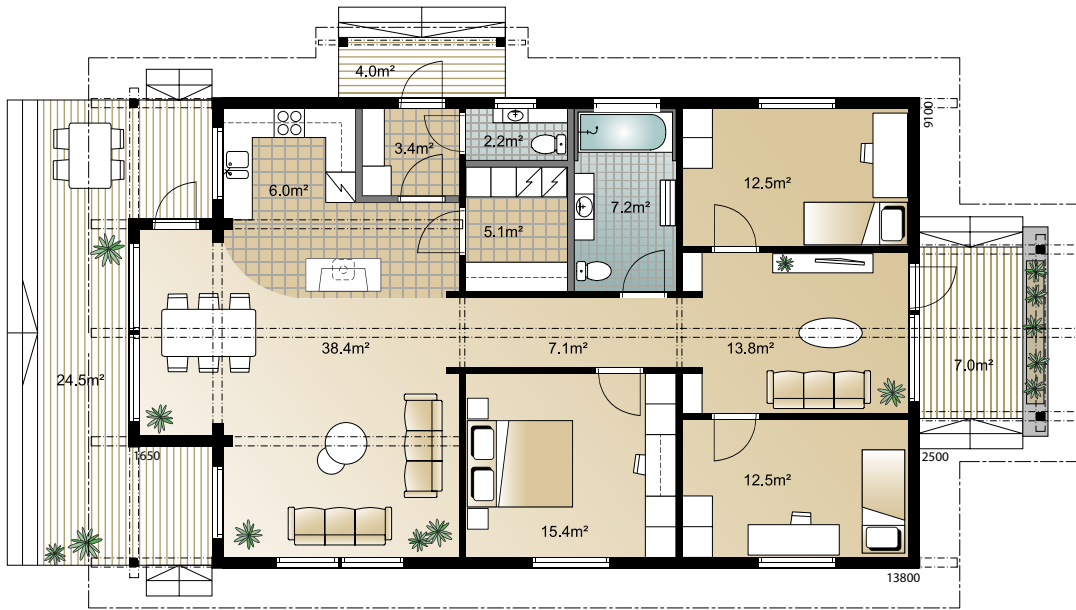
**KONTIO
SENSUS
LEO 123**



**KONTIO
SENSUS
LEO 110**



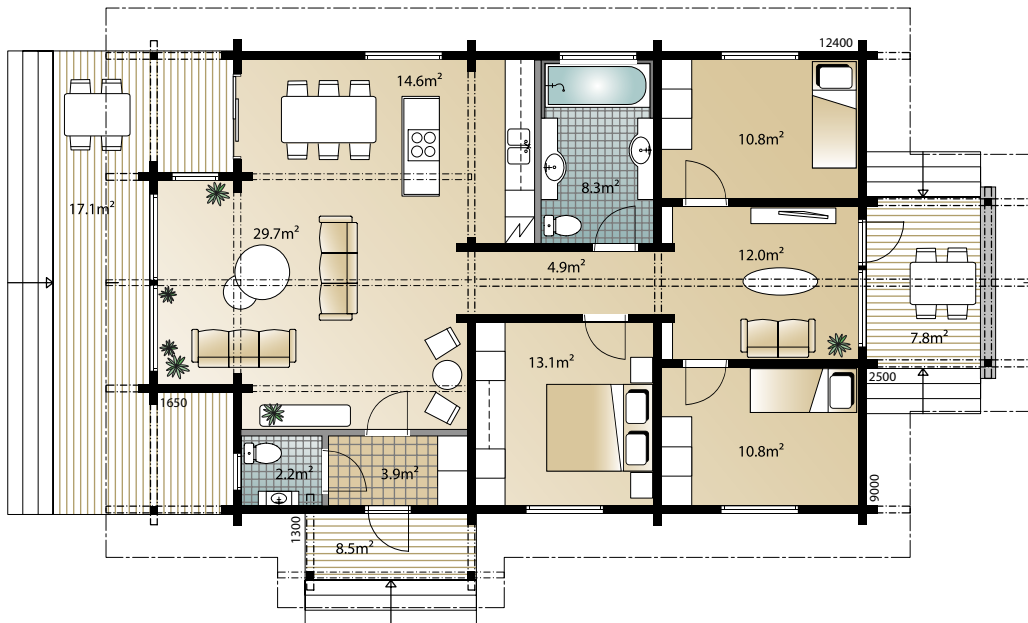
GROUND FLOOR 123.6 m² | TERRACE 35.5 m²



GROUND FLOOR 1:150

These models have the same basic idea, but they differ by approach. Sensus Leo 123 exemplifies the modern Kontio style with City corners, thinner interior log walls and dovetail joints, whereas Sensus Leo 110 represents the traditional building technique of notched corners and thicker interior walls.

GROUND FLOOR 110.3 m² | TERRACE 33.4 m²



GROUND FLOOR 1:150

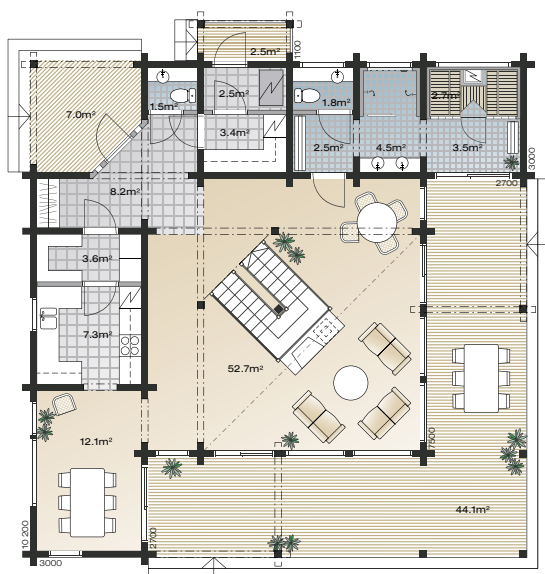
KONTIO LAMINARIA 2



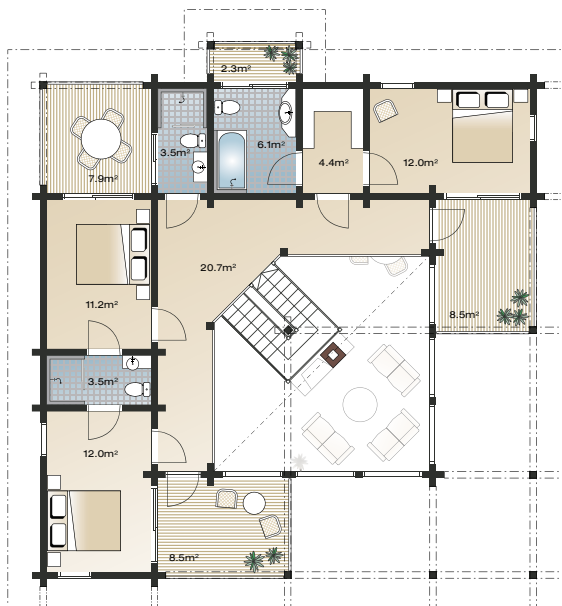
GROUND FLOOR 106.3 m² | FIRST FLOOR 73.4 m² | TERRACE 53.6 m² | BALCONY 24.9 m²

Laminaria is one of the most distinctive housing options, which represents the style, spaciousness and charm of a more demanding taste. The wide, open centre space of this modern home embraces the views from each corner of the house. Balcony or terrace access from each room brings additional deluxe to this home.

GROUND FLOOR 1:200



FIRST FLOOR 1:200





LOOKING FOR
BIGGER
 MODELS AND MORE KONTIO DESIGNS?
 SEE KONTIO.COM FOR A WIDE RANGE
 OF OPTIONS!



Rectangular logs, pine



95 x 170 120 x 170

From the comprehensive
 Kontio collection of
 rectangular and round
 logs you will find a choice
 fitting your needs.

Laminated logs, pine



95 x 170 135 x 170 180 x 170 205 x 220



135 x 275 205 x 275 243 x 275 275 x 275

Round logs, pine

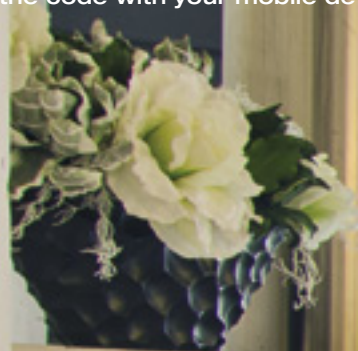


150 mm 170 mm 210 mm 230 mm
 (laminated round log)

SEE



the factory introduction video at www.kontio.com or
download from the code with your mobile device.



KONTIO
LOG HOUSES

FIND MORE KONTIO LOG HOUSES AND
YOUR LOCAL KONTIO CONTACT AT KONTIO.COM

Kontiotuote Oy Ranuantie 224, FI-93100 Pudasjärvi, FINLAND
Tel.+358 20 770 7400, Fax +358 20 770 7520,
export@kontio.fi www.kontio.com