

Kontio Log Houses

Kontio log houses are manufactured from Northern close-grained wood.

www.kontio.com



KONTIO
LOG HOUSES



Kontio Log Houses from the top of the World





Contents:

Background for the name "Kontio"	4-5
Warmth in all seasons	6-7
Kontio Log Houses – All over the world	8-9
Kontio lives in all cultures	10-11
References	12-29
Kontio Headquarters	30-30
Kontio Log House – Most of all authentic	32-33
Kontio Models	34-107
Kontio Crocus	34-35
Kontio Tulip	36-37
Kontio Rosa	38-39
Kontio Calla	40-41
Kontio Hedwigia 40 and 57	42-43
Kontio Ludwiglia 66 and 115	44-45
Kontio Claytonia	46-47
Kontio Plantago	48-49
Kontio Melica	50-51
Kontio Antheta	52-53
Kontio Corallina	54-55
Kontio Rhamnus	56-57
Kontio Nowellia	58-59
Kontio Delphinium	60-61
Kontio Acer	62-63
Kontio Angelica	64-65
Kontio Juncus	66-67
Kontio Helenium	68-69
Kontio Arcticus	70-71
Kontio Monarda	72-73
Kontio Paris	74-75
Kontio Humulus	76-77
Kontio Grimmia 1 and 2	78-79
Kontio Cirsium	80-81
Kontio Graphis	82-83
Kontio Mentha	84-85
Kontio Brassica	86-87
Kontio Calypso	88-89
Kontio Valeriana	90-91
Kontio Laminaria	92-93
Kontio Marsilea	94-95
Kontio Ulmus	96-97
Kontio Mertensia	98-99
Kontio Carlina	100-101
Kontio Normandina	102-103
Kontio Nitella	104-105
Kontio Restaurant	106-107
The renaissance of authenticity	108-109
Kontio interior styles	110-123
Cosy cottages	110-111
Living rooms	112-113
Living rooms with a fireplace	114-115
Dining	116-117
Kitchens	118-119
Bedrooms, studies	120-121
Saunas, bathrooms	122-123
Working in a Kontio log house	124-125
Natural log	126-127
The best there is	128-129
Forestry in Finland	130-131
Kontio – Means quality	132-133
Kontio factory and production	134-135
Drying of the log	136-137
Log assortment	138-139
Is this your dream?	140-141
Visit www.kontio.com	142-143

Distances shown in the drawings are measured from the middle of the logs. Living area of a model varies depending on the log type chosen. Note: pictures of the facades do not always correspond with the floor plans of the designs.

Background for the name "Kontio"



Kontio is one of the names for "bear" in Finnish folklore.



The bear was adored as The King of Forest. As it was impossible to say the word "bear" aloud, aliases such as Kontio were used instead.

Kontiotuote Oy respects natural values and the offerings of the forest.

Kontio Log House in many ways resembles the original bearer of its name: it is a stout creature from northern nature, well suited for many circumstances.





Warmth in all seasons



Each of the four northern seasons speaks its own language. From high summer heats to severe winter frosts, temperature can vary by 60 to 70 degrees Celsius!

Wood is a natural material which also takes into account temperature, humidity and weather conditions. Log has an excellent insulating capacity and it also efficiently balances internal temperature and humidity. A log house naturally adapts to current circumstances. We at Kontio know the superior properties of northern wood. This is why Kontio Log Houses creates cosy warmth in all seasons.







Kontio Log Houses – All over the World

Kontio is a large, global log building manufacturer. Close-grained northern wood is known in all continents. The company annually delivers more than 2,000 Kontio log buildings to circa 20 countries in Europe, Asia and Russia.

Kontio is a strong quality brand and a world pioneer in log construction technology. High quality, continuous product development, flexible production methods and reliable deliveries ensure that Kontio with its international designs has the capacity to respond to even the most demanding needs of customers.



- | | |
|----------------|-----------------|
| Austria | Korea |
| Belarus | Latvia |
| Czech Republic | Lithuania |
| Estonia | The Philippines |
| Finland | Portugal |
| France | Russia |
| Germany | Schwitzerland |
| Greece | Slovenia |
| Ireland | Spain |
| Italy | Sweden |
| Japan | UK |
| Kazakhstan | Ukraine |



Kontio lives in all cultures



Modern log construction technology also enables architectural design based on local or national considerations. Kontio and its resellers design and manufacture buildings in accordance with building regulations and individual desires. Wood is a living material and is shaped into magnificent log buildings, creating a truly individual architecture.



Ukraine



Japan



China



Russia



Estonia



Greece



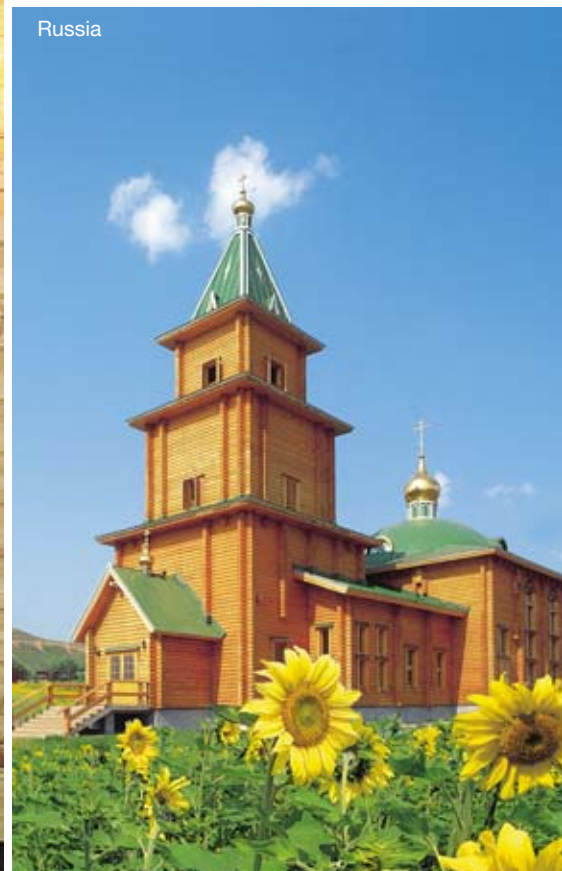


References

The excellent quality of northern wood as a building material is well known in many parts of the world. Kontiotuote log buildings have aroused admiration in Irish riders, in Japanese golfers, in visitors to Thailand, and in many more... At the Lillehammer Olympic Games, the sportsmen and -women as well as the press were lodged in Kontio log cabins. Kontiotuote Oy has a wide variety of international references. In the following pages, we present a few projects implemented in Europe and Asia.



Russia



Russia



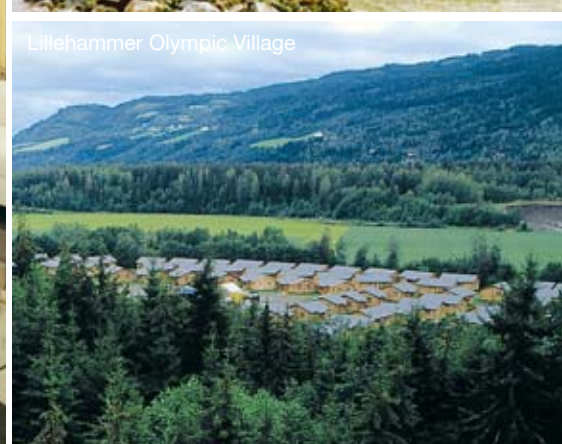
Russia



The Netherlands



Ireland



Lillehammer Olympic Village



France



References

Kontio and Lillehammer Olympic Village

Organizing the Winter Olympic Games in 1994 was a tremendous challenge for the small town of Lillehammer in Norway. The requirements were high. The Olympic Village had to serve thousands of sportsmen, press representatives and international guests. The decision was made to build 285 log cottages in the Olympic Village. Delivering hundreds of log houses at the same time required delivery capability and sufficient resources, and Kontio kept what it promised.





References

Nidom Golf Centre in Japan

In Japan, natural wood is held in high esteem. Therefore, Northern close-grained wood was an obvious choice as the building material for the Nidom Golf Centre. Also, the rapidly changing climatic conditions in Japan demand a lot of the building material, and the possibility of earthquakes puts especially high demands for structural durability. Kontiotuote Oy delivered high-quality log houses to the golf centre in Hokkaido, to be used as holiday residences. Log was also used for the inner and outer surfaces of the Club House to create a pleasant atmosphere. This project demonstrates the excellent suitability of log for even large complexes.





References

Projects in the Netherlands

There are several holiday villages in the Netherlands where families can spend their holidays in truly Finnish log cottages. Three generations, from grandparents to grandchildren, pursue leisure-time activities together. The guests have found the log cottages warm, cozy and natural to live in. During the 90's, Kontiotuote Oy has delivered more than 300 cottages to Holland. The holiday village projects have been implemented according to the wishes of the customers, and special attention has been paid to the special features of the local construction tradition.





References

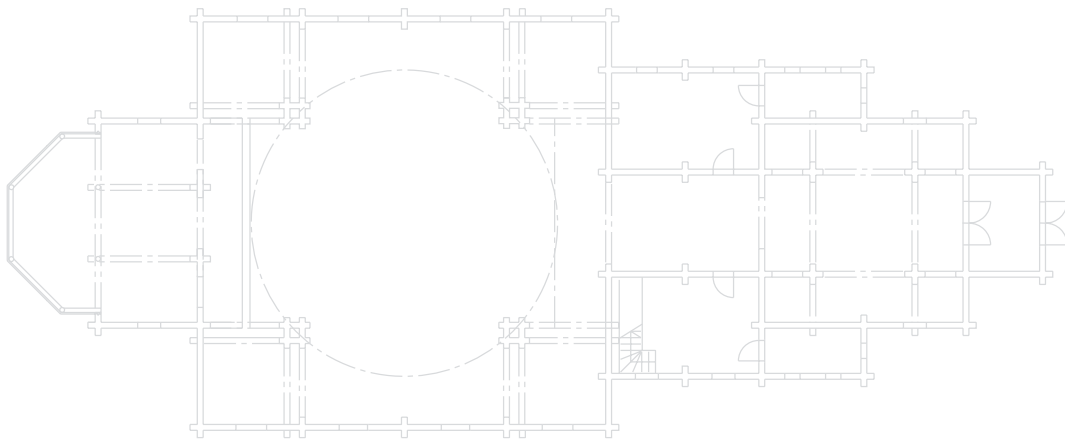
Rider's Dream: Drumcoura City

The green heaths, the blue lake, silence caressing the ear: a perfect scenery for riding. Drumcoura City, situated in Central Ireland, is a holiday village built to satisfy the needs of riding tourists. The area features both covered and outside arenas, and riding routes are provided for the beginner as well as the experienced rider. Other recreational activities include fishing, trekking and sailing. What makes Drumcoura City unique is the fact that all the buildings have been manufactured from log supplied by Kontiotuote Oy. For accommodating the riders, Kontio log cabins of different sizes are available. The stable buildings and the saloon are also made of log. According to the riders, the natural log houses blend beautifully with the serene landscape and are absolutely the most suitable choice.





References



Church Architecture of Log

This impressive, wholly log-built church is the biggest individual building delivered by Kontio. The church, built of sturdy round log, is more than 40 meters long, and the stately church tower rises to the height of 26 meters. The church is situated in the Orenburg Region, approximately 1500 km east from Moscow. The orthodox church was built in the center of a small village, close to a former church location. The tall church tower aptly serves as the landmark and focal point for the village in the open Steppes landscape. The robust log walls create a peaceful atmosphere in the church, giving the beautifully lit church hall a most original and warm ambience.





References

Country Village on the Shore of Lake Istra

Lake Istra, located within a convenient drive from Moscow, provides picturesque landscapes in a peaceful countryside setting. A close circle of 13 families who like to spend time together dreamed of having a holiday village of their own. Now the dream has met reality: such a resort has indeed been constructed on the shore of Lake Istra. The village consists of 13 log houses, one for each family, and a private clubhouse for parties and other social gatherings. There is also a sauna on the shore of the lake. The guarded resort provides ample opportunities for healthy outdoor activities, such as tennis playing, swimming, boating and snowmobiling, as well as for quiet relaxation. There are currently other Kontio-supplied country villages by Lake Istra, some of them with as many as 50 families. Dreaming of something similar? As you can see, dreams do come true.





References

Village of the Sun

East of Bordeaux, there is a small and idyllic country village called Mauroux. Deep in the heart of rural France, amongst the stone houses and vineyards, Finnish log cabins nestle. This is Village du Soleil - an exotic slice of the north in the middle of Europe. The village of the sun' offers the tourist a choice of spending a culinary vacation, savouring the delicacies a la Mauroux, or a sporting holiday, hiking amid lovely landscapes. Kontiotuote Oy was selected as the supplier of log cabins in the village. Log walls shelter residents from burning sunlight at noon and from coolness at night, and keep room humidity agreeably even.





References

Kontio Show House

Kontio Show House in Moscow is located along one of the world's most legendary highways, Rublyovskoe.

The Show House is an outstanding gate into the Kontio world. The fresh and modern loghouse design naturally arouses curiosity among road users, encouraging them to come and take a closer look at the broad variety of models, materials and architectural styles that Kontio has to offer. Inside there is a permanent exhibition of Kontio's past achievements and references together with an exciting outlook to the log houses of the future. We at Kontio are convinced that trends are not to be followed, they are to be set. Kontio Show House is an architectural statement created by Finnish architect Asko Lax.





Kontio Headquarters



Naturally enough, the Headquarters of Kontiotuote Oy are a feat of modern log construction architecture. The headquarters have been designed by Finnish Architectural office Arkdesign Juha Paldanius Ky. The imposing and streamlined building has been especially designed for office use. Genuine wood, spacious solutions and many exciting details in interior decoration give the building an individual touch. This is the setting in which the most magnificent log buildings in the world are designed.







Kontio Log House – Most of all authentic

Kontio Log House designs offer log buildings for various uses. Whether you are in for simple holiday living, luxurious villas, or practical and individual one-family houses, Kontio has a solution to meet your needs.

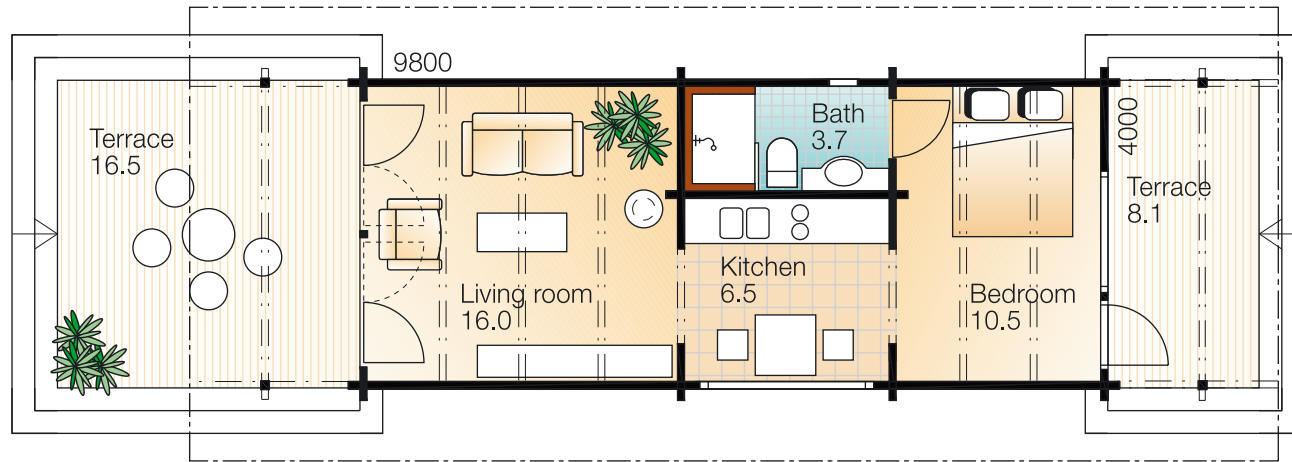
Together with its resellers, Kontio also implements individual projects based on the customer's special needs and objectives. You can combine wood, stone, glass, floors, surfaces – the range of options is abundant. Tell us about your wishes, and our experts on log architecture will design the house of your dreams!





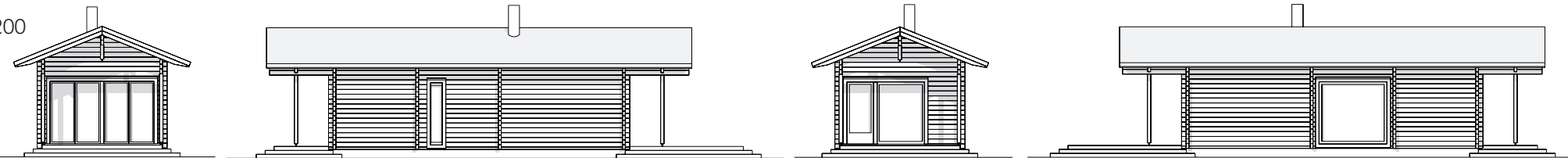
Kontio Crocus

Ground floor 36.7 m² , Terrace 24.6 m²



Ground floor 1:100

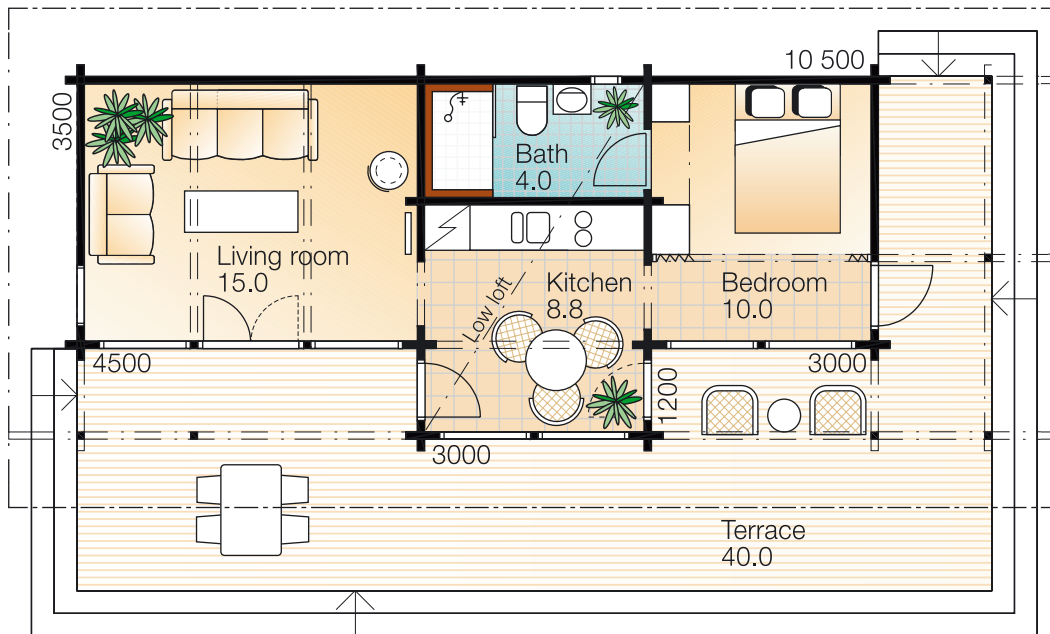
1:200



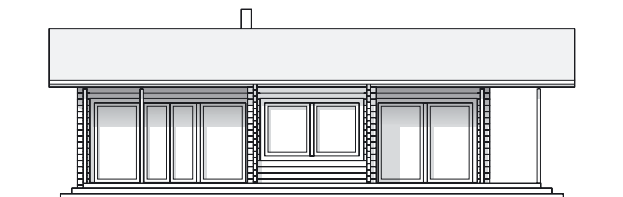
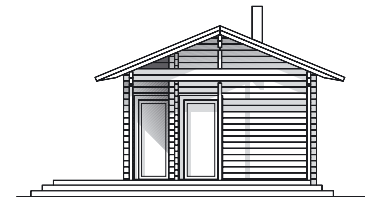
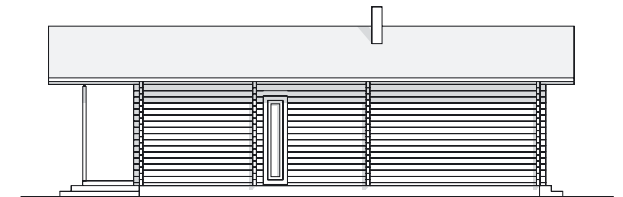
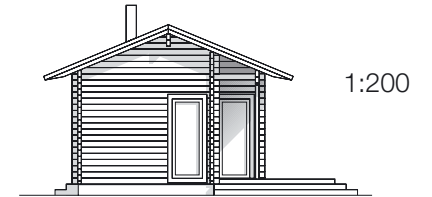


Kontio Tulip

Ground floor 37.8 m² , Terrace 40 m²

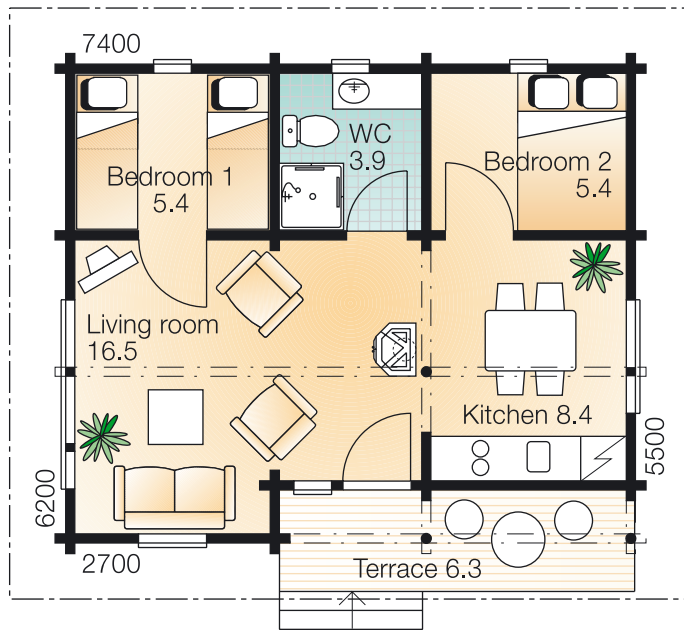


Ground floor 1:100

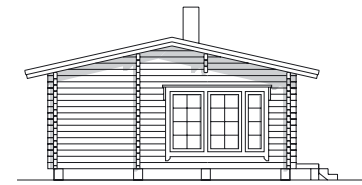


Kontio Rosa

Ground floor 39.6 m² , Terrace 6.3 m²



Ground floor 1:100

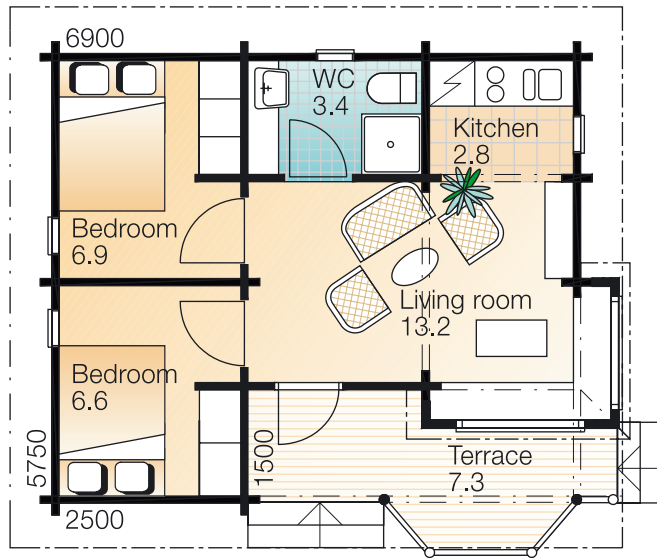


1:200

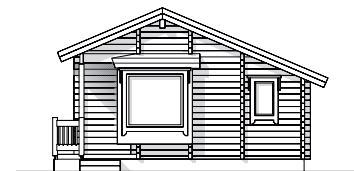
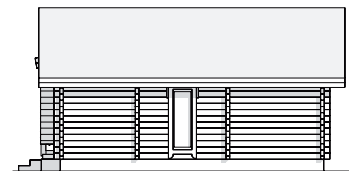
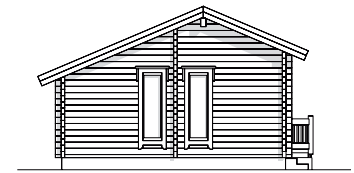


Kontio Calla

Ground floor 32.9 m² , Terrace 7.3 m²



Ground floor 1:100



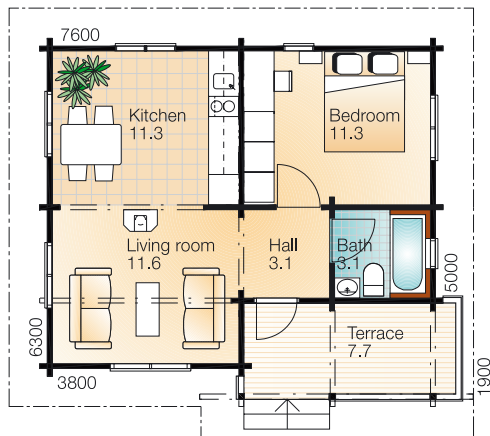
1:200



Kontio Hedwigia 40 and 57

Kontio Hedwigia 40: Ground floor 40.6 m² , Terrace 7.7 m²

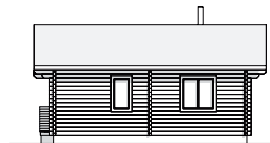
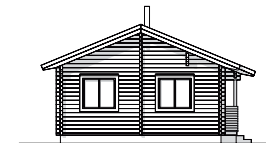
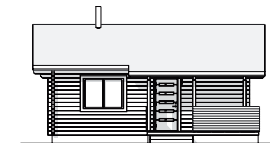
Kontio Hedwigia 57: Ground floor 40.4 m² , First floor 16.7 m² , Terrace 7.7 m²



Kontio Hedwigia 40 Ground floor 1:150

Kontio Hedwigia 40

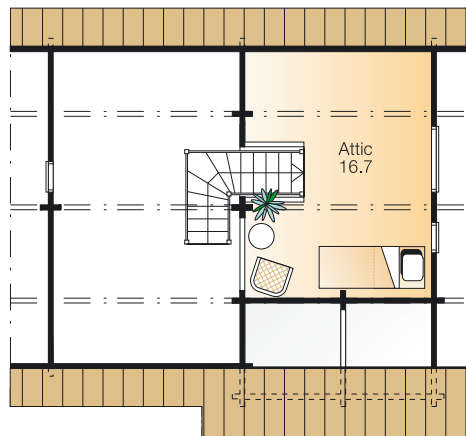
1:300



Kontio Hedwigia 57 Ground floor 1:150

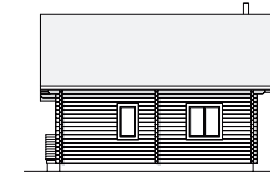


Kontio Hedwigia 57 First floor 1:150



Kontio Hedwigia 57

1:300



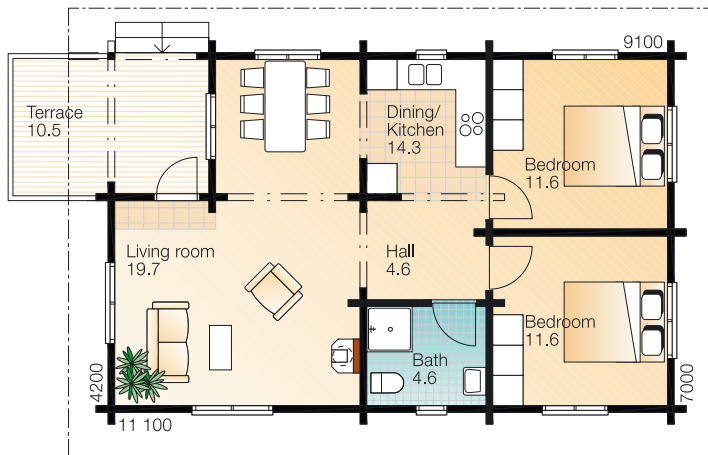


Kontio Ludwigia 66 and 115

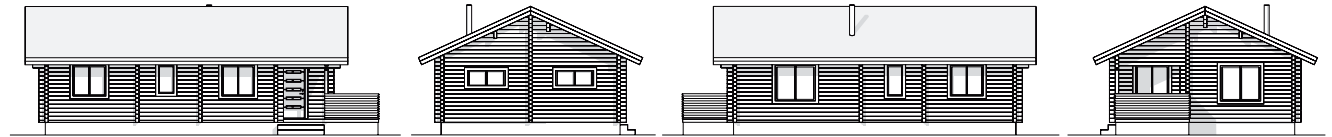
Kontio Ludwigia 66: Ground floor 66.4 m², Terrace 10.5 m²

Kontio Ludwigia 115: Ground floor 66.4 m², First floor 48.4 m², Terrace 14.5 m²

Ludwigia 66 Ground floor 1:150

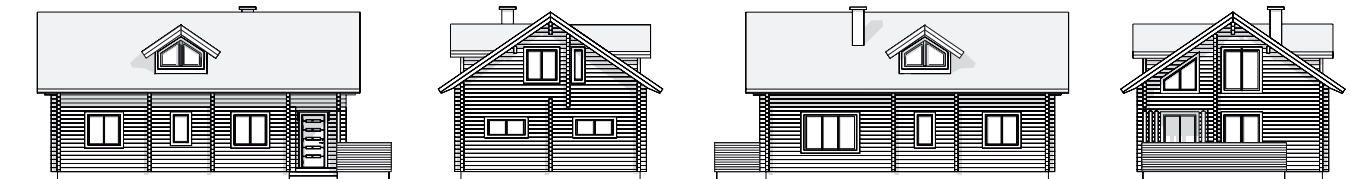


Ludwigia 66



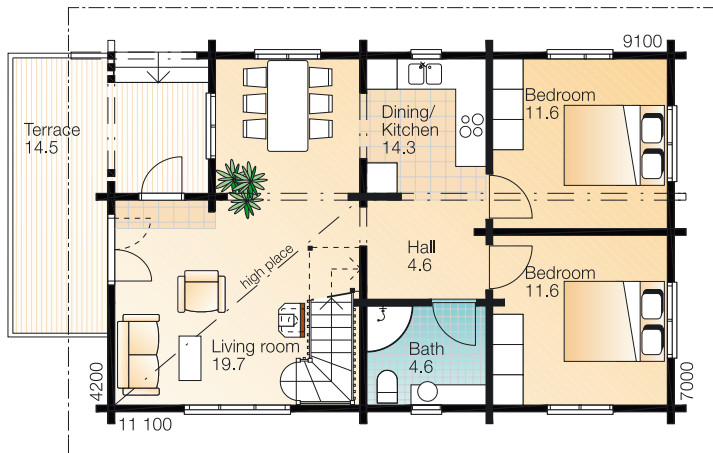
1:300

Ludwigia 115

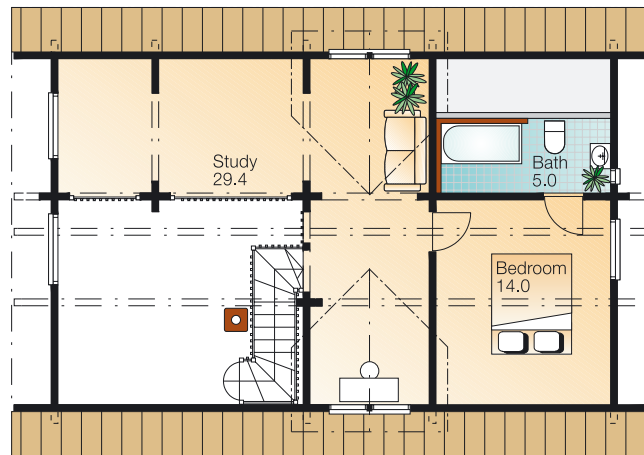


1:300

Ludwigia 115 Ground floor 1:150



Ludwigia 115 First floor 1:150



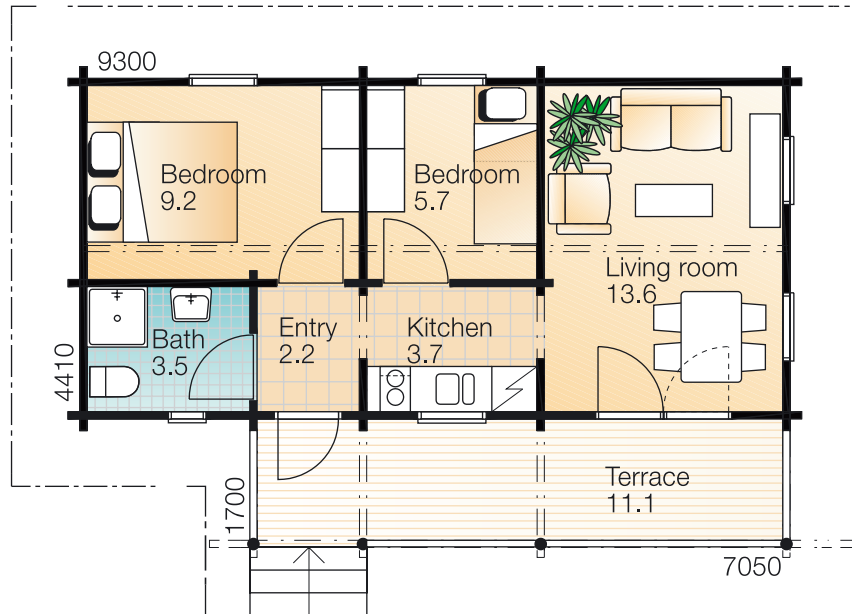


Kontio Ludwigia 66

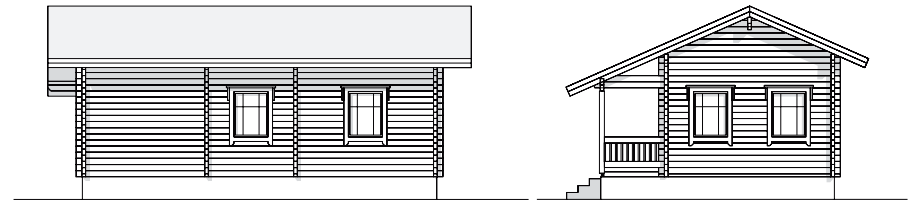
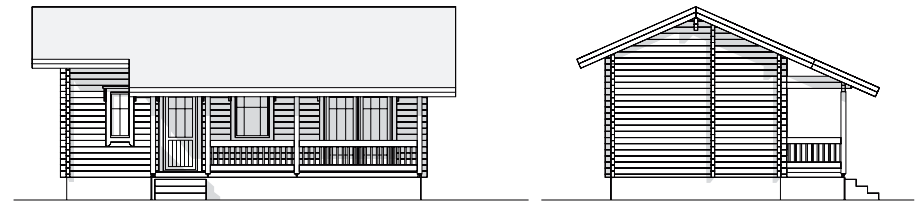


Kontio Claytonia

Ground floor 37.7 m² , Terrace 11.1 m²



Ground floor 1:100



1:200

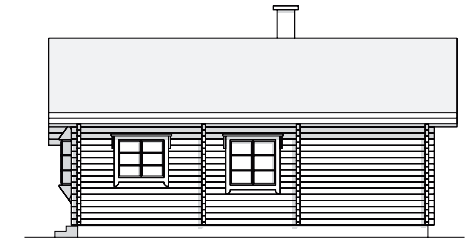
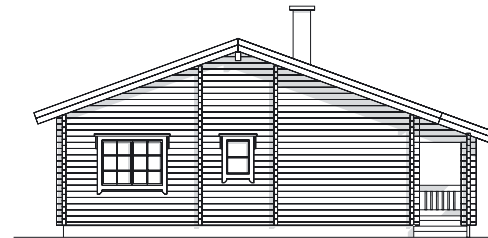
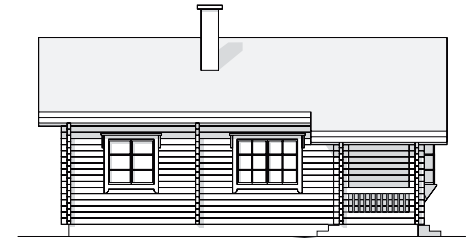


Kontio Plantago

Ground floor 71.0 m² , Terrace 11.3 m²



Ground floor 1:100

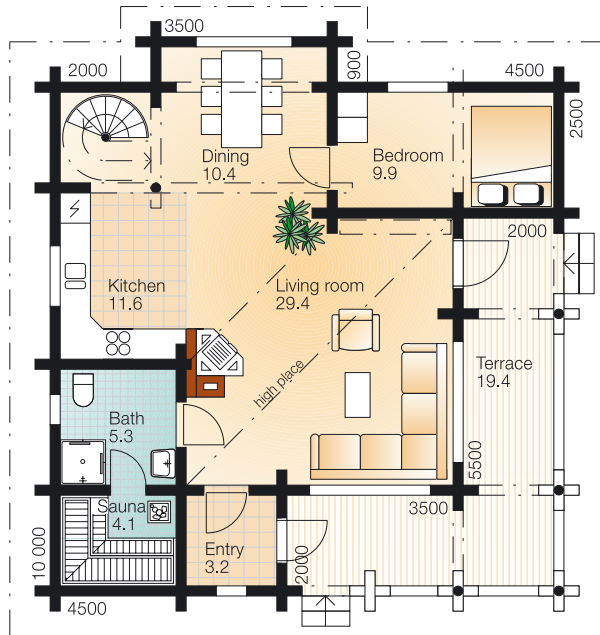


1:200

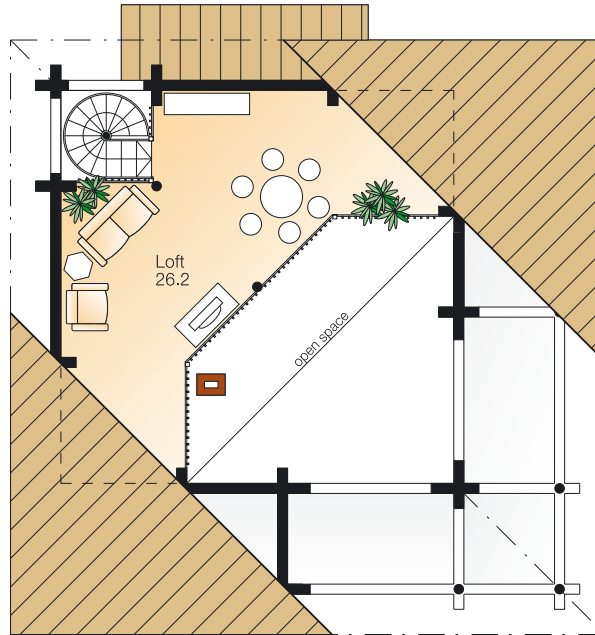
Kontio Melica

Ground floor 69.9 m², Terrace 19.4 m²

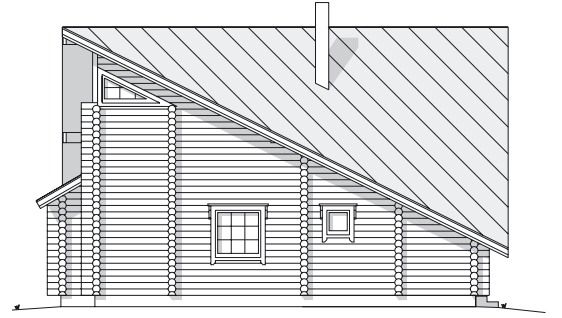
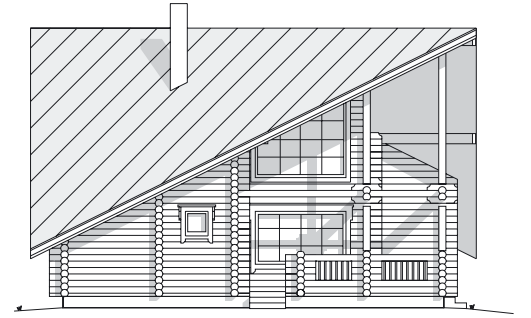
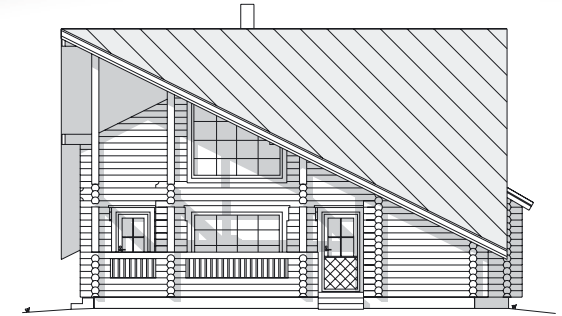
First floor 26.2 m²



Ground floor 1:150



First floor 1:150

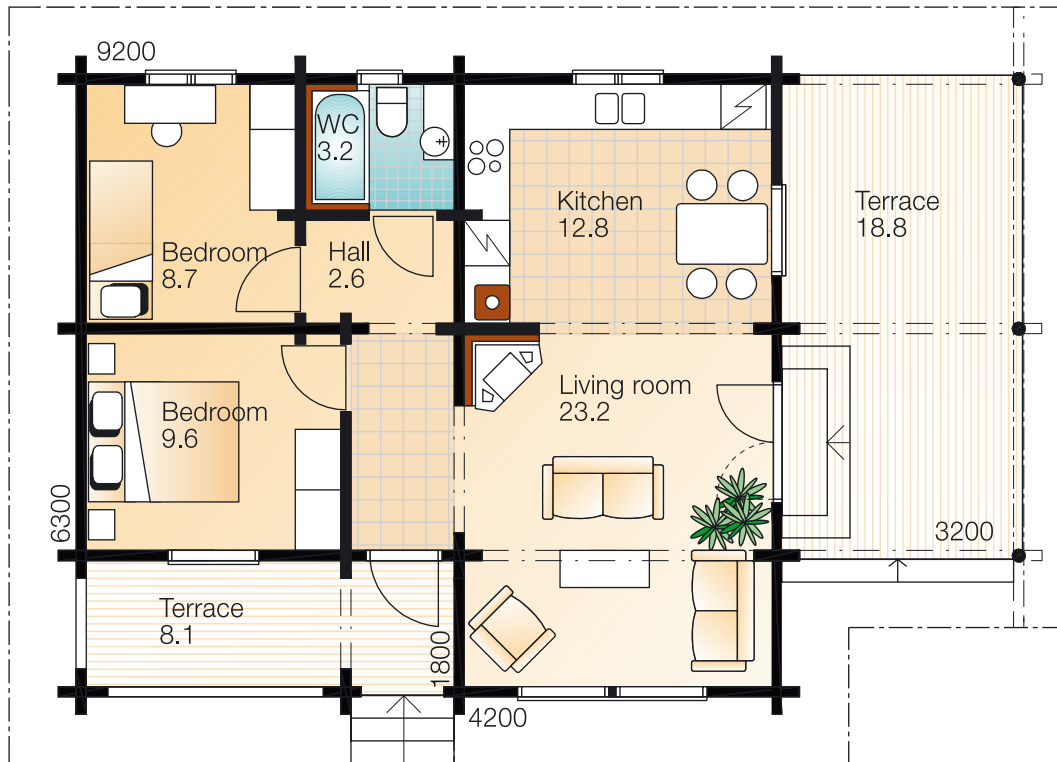


1:200

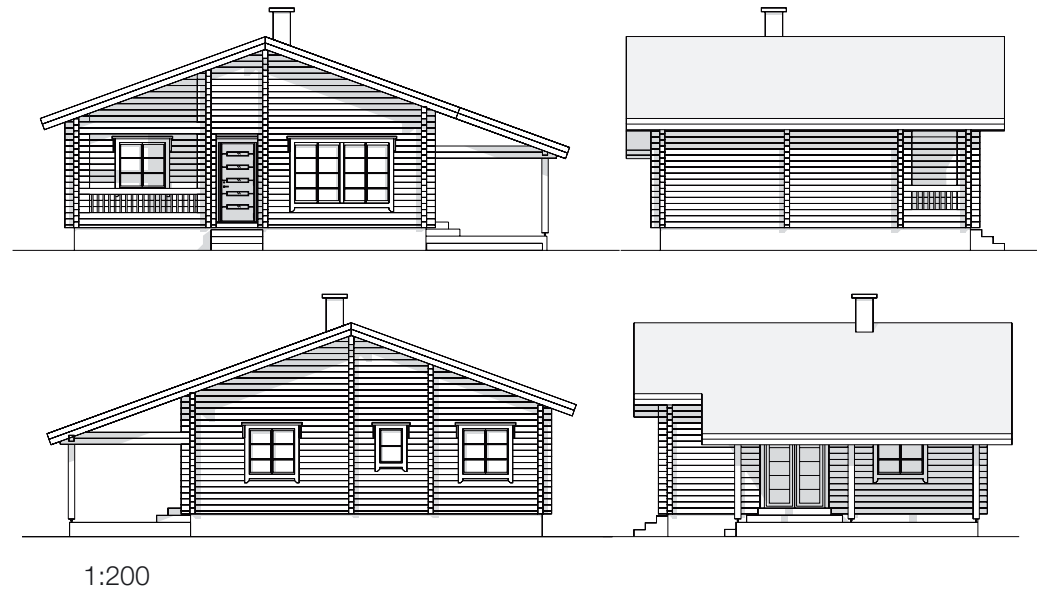


Kontio Anthelia

Ground floor 60.1 m², Terrace 26.9 m²



Ground floor 1:100

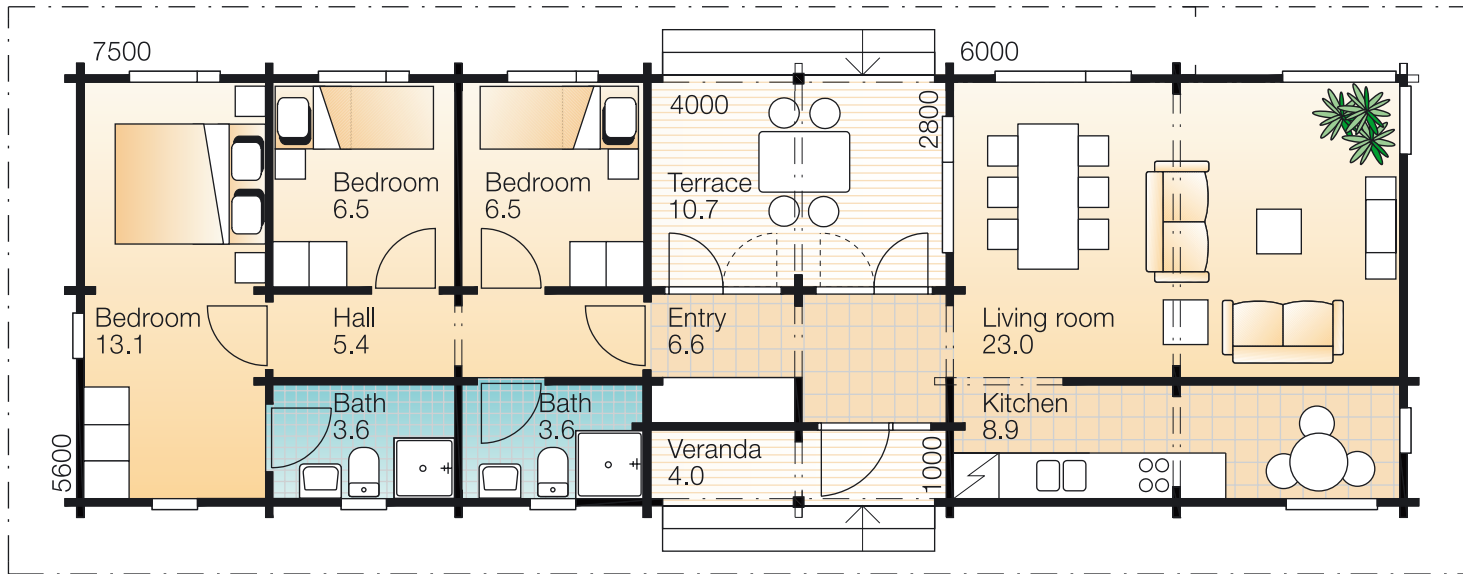




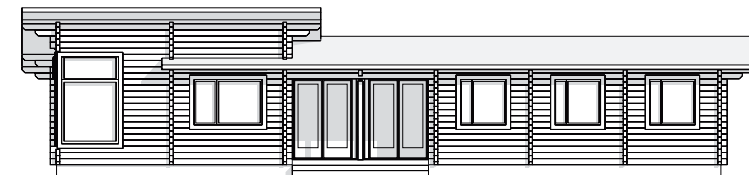
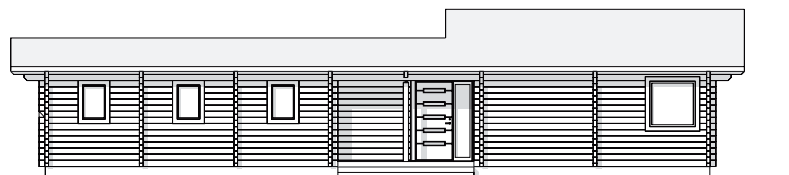
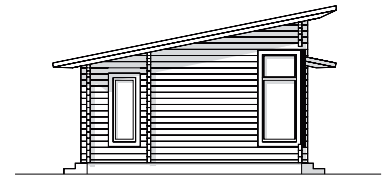
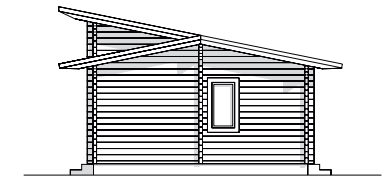


Kontio Corallina

Ground floor 77.2 m² , Terrace 14.7 m²



Ground floor 1:100



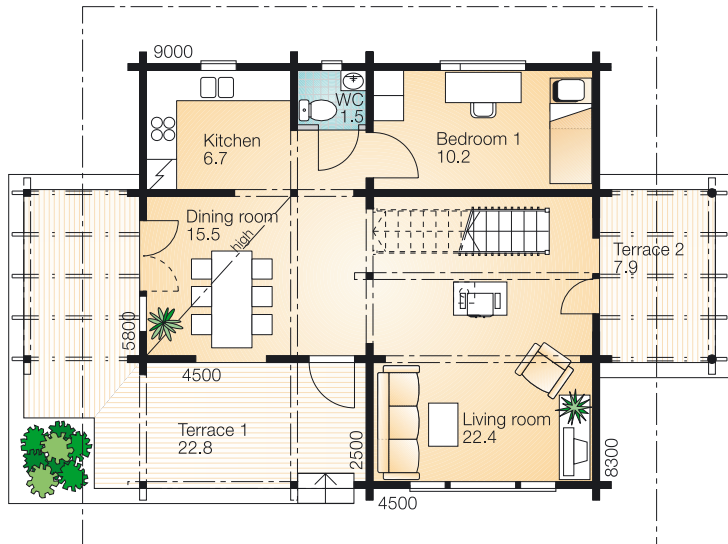
1:200

Kontio Rhamnus

Ground floor 58.8 m² , Terrace 30.7 m²

First floor 43.6 m² , Balcony 10.8 m²

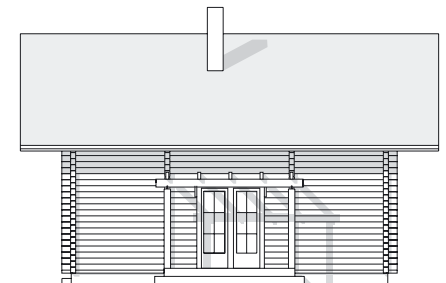
Ground floor 1:150



First floor 1:150



1:200

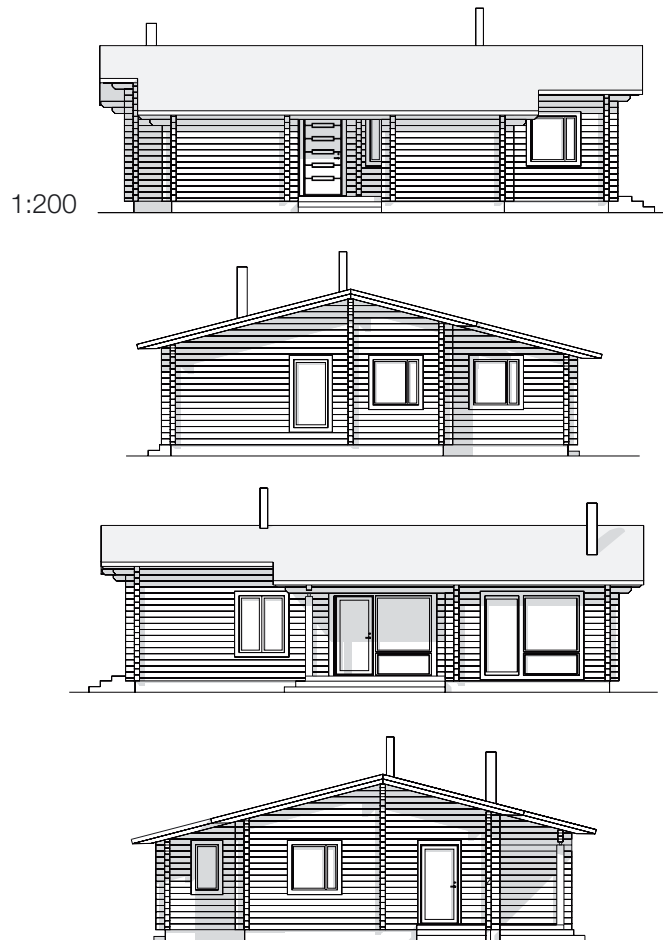




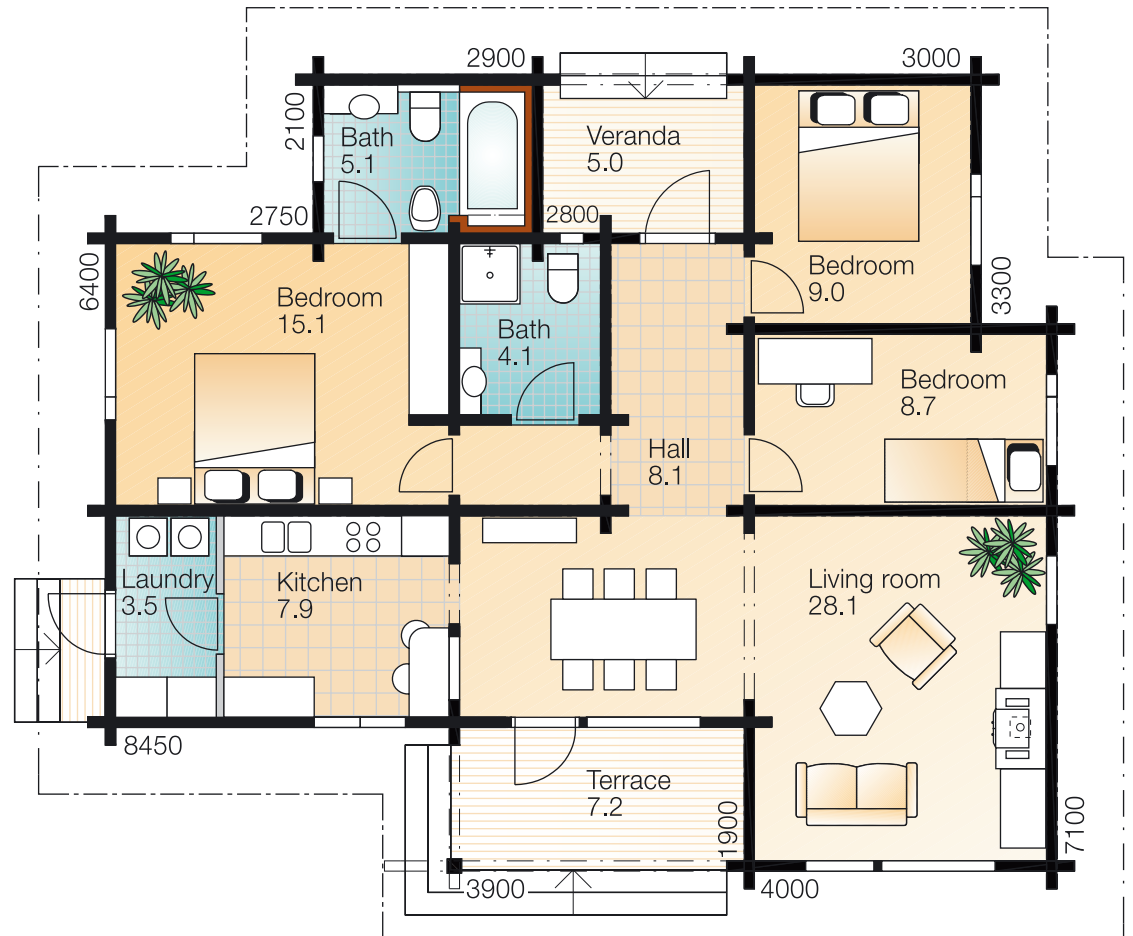


Kontio Nowellia

Ground floor 86.9 m² , Terrace 12.6 m²

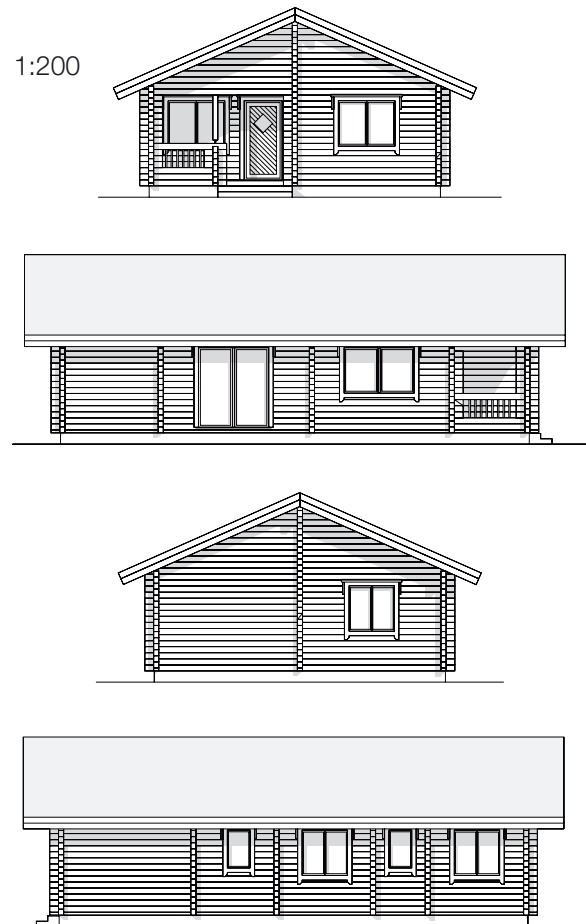


Ground floor 1:100

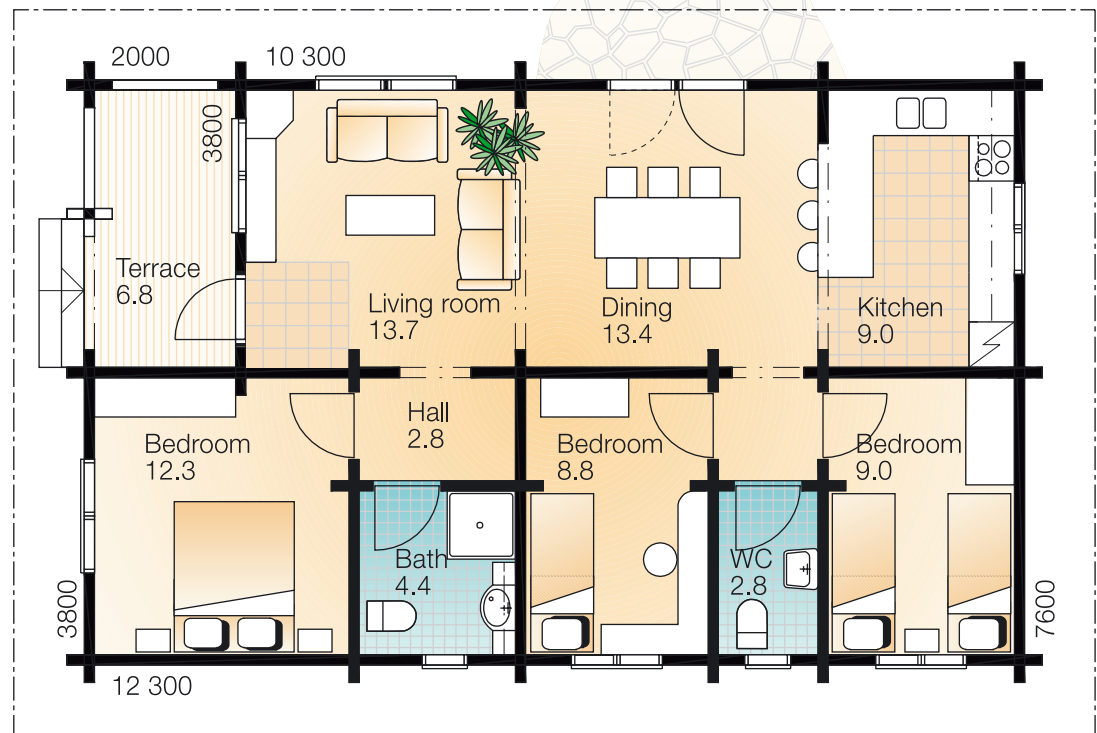


Kontio Delphinium

Ground floor 77.9 m² , Terrace 6.8 m²



Ground floor 1:100



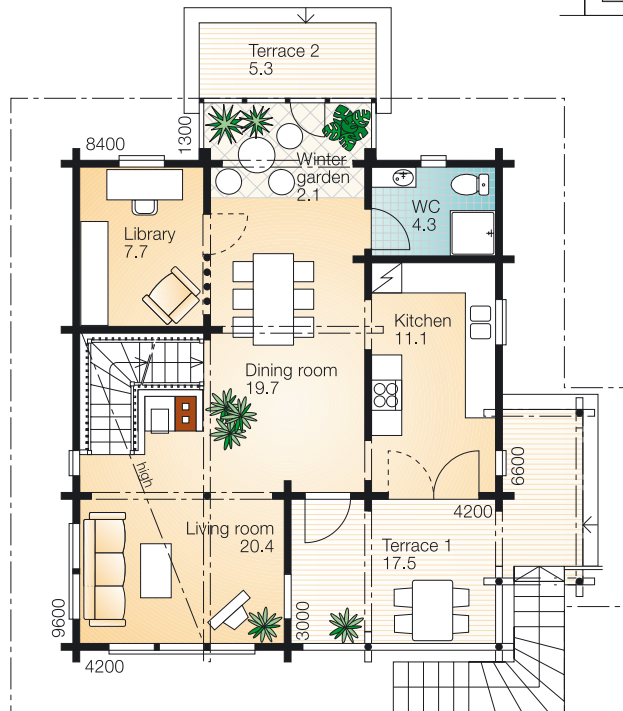


Kontio Acer

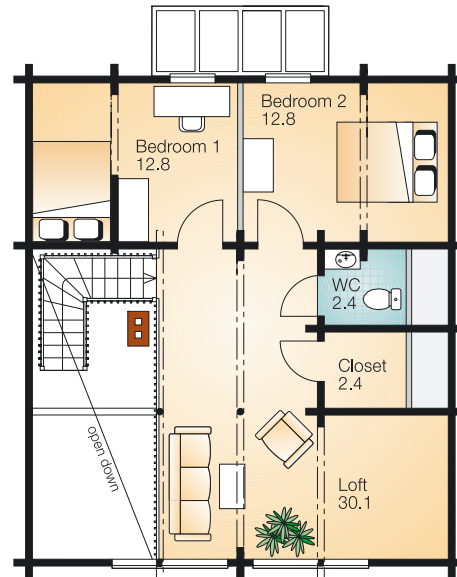
Ground floor 63.9 m², Terrace 22.8 m²

First floor 56.0 m², Cellar 55.9 m²

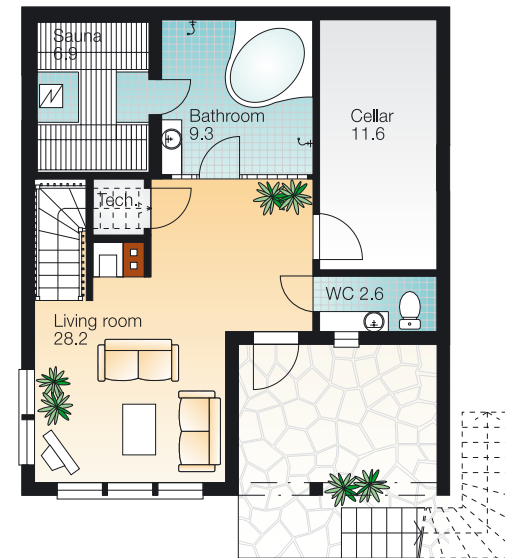
1:300



Ground floor 1:150



First floor 1:150



Cellar 1:150

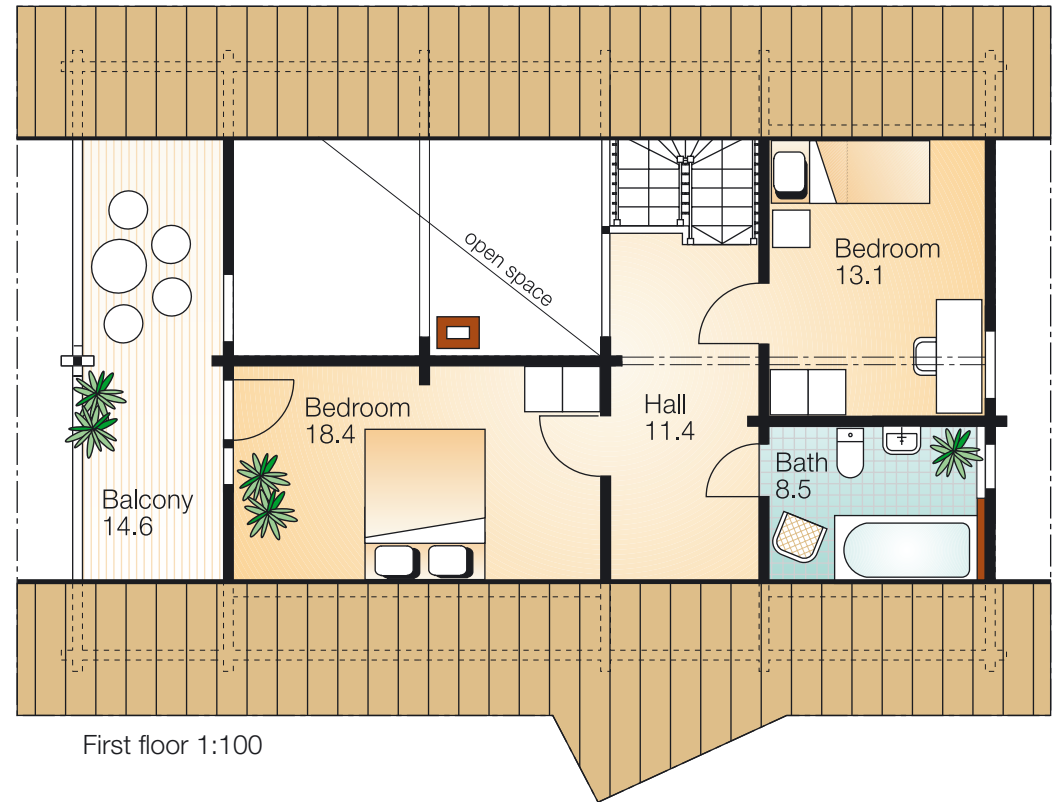
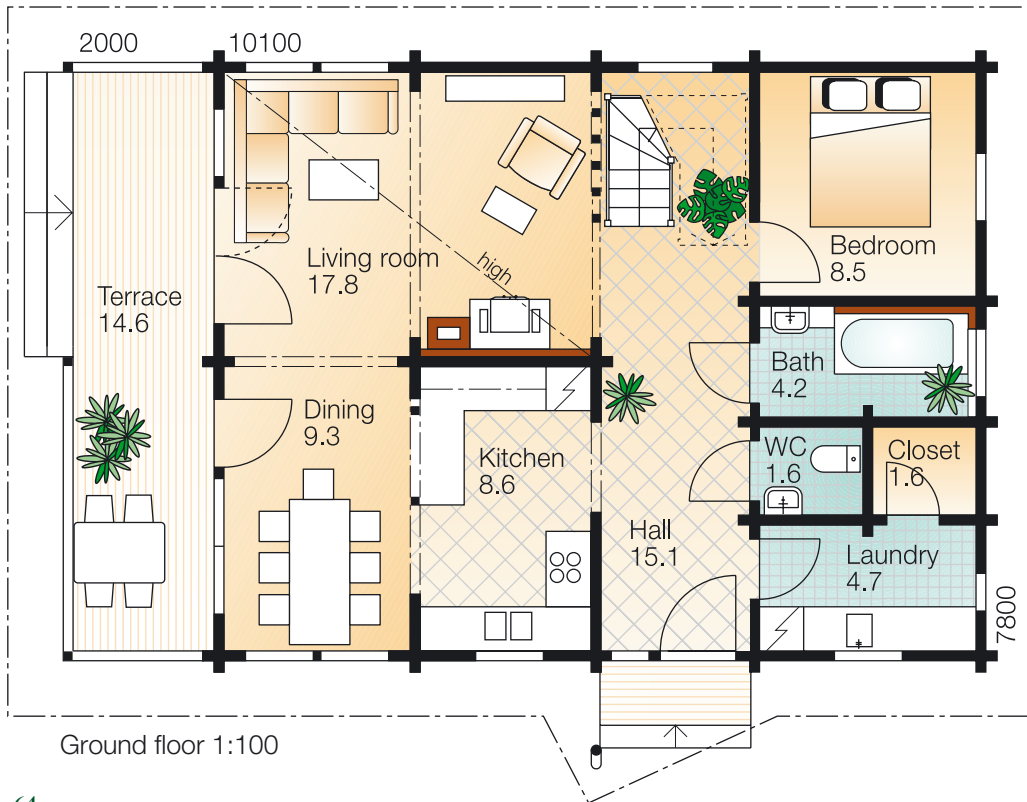


Kontio Angelica

Ground floor 71.4 m², Terrace 14.6 m²

First floor 51.4 m², Balcony 14.6 m²

1:300

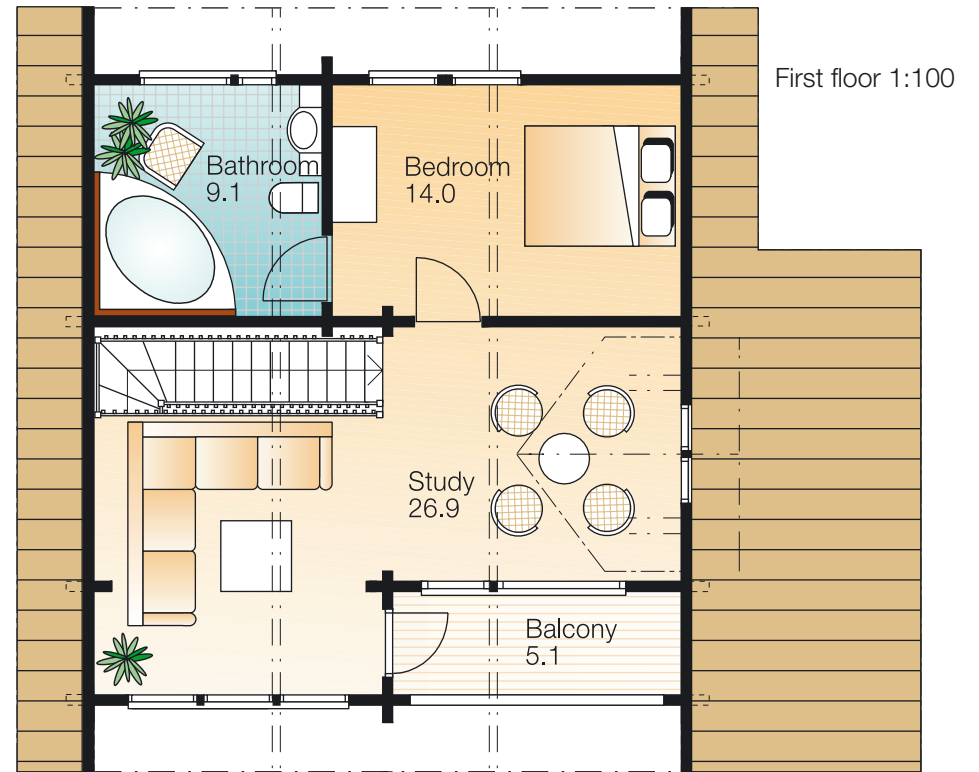
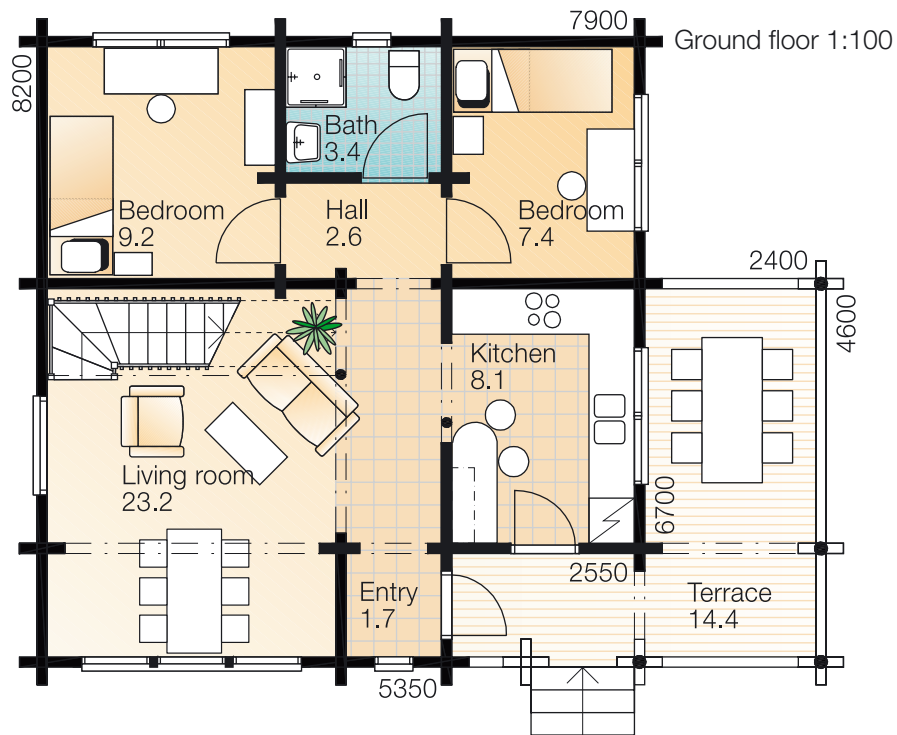




Kontio Juncus

Ground floor 55.6 m², Terrace 14.4 m²

First floor 50.0 m², Balcony 5.1 m²



1:300

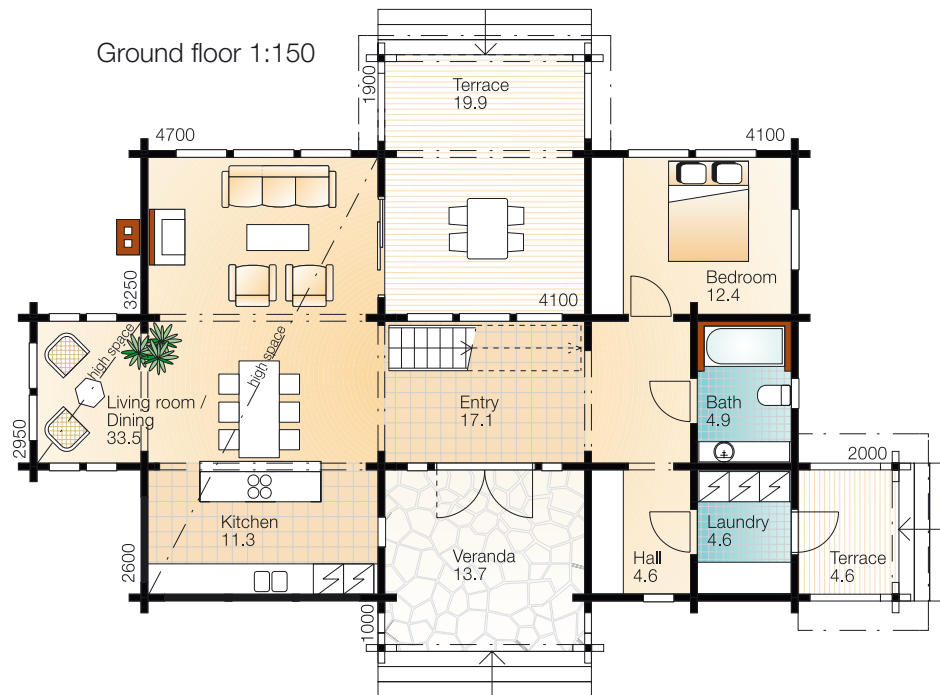




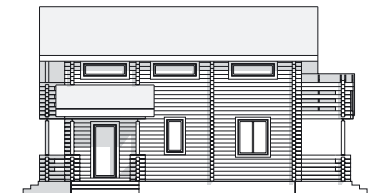
Kontio Helenium

Ground floor 89.9 m² , Terrace 38.2 m²

First floor 40.8 m² , Balcony 13.7 m²



1:300

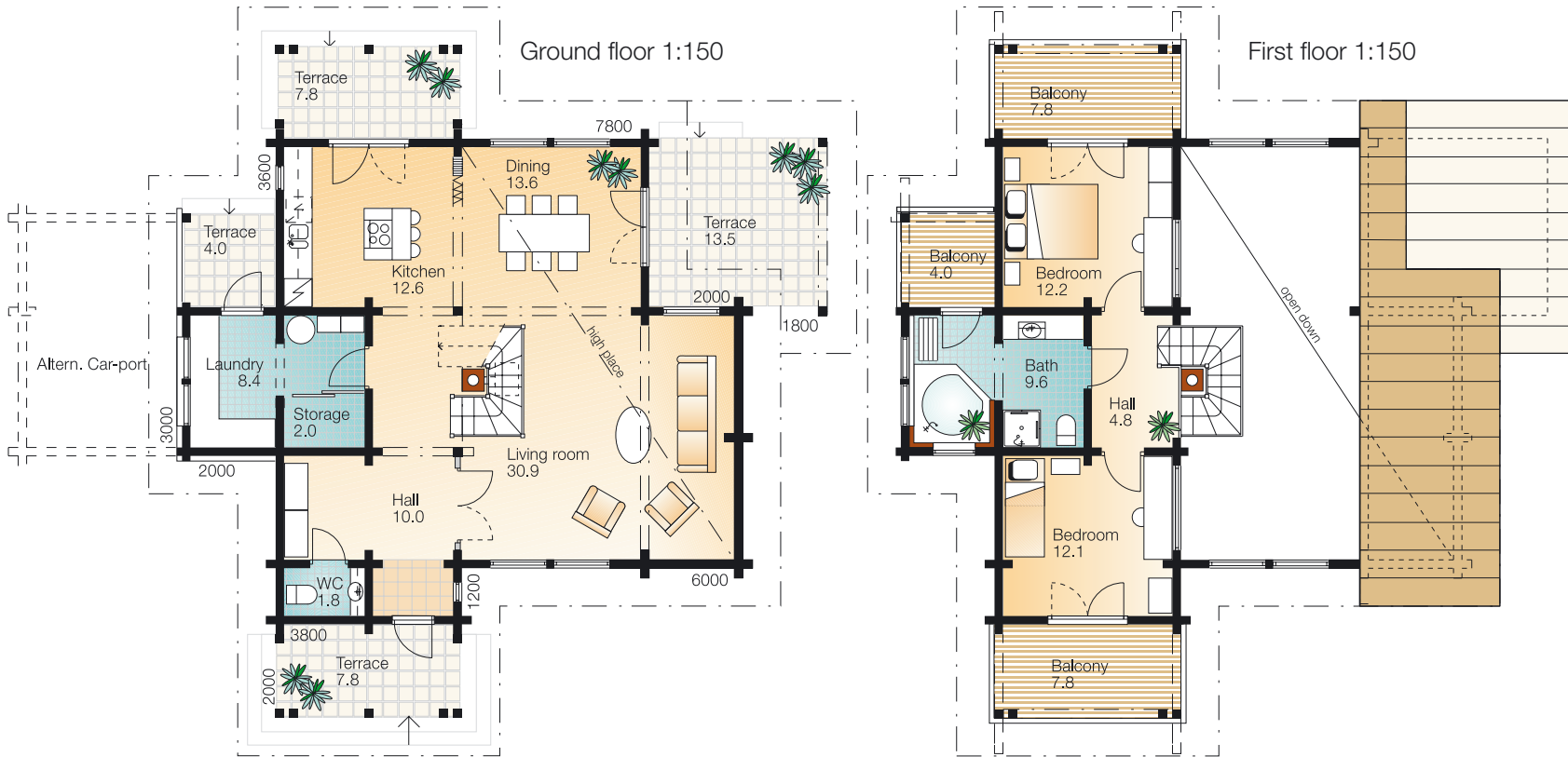
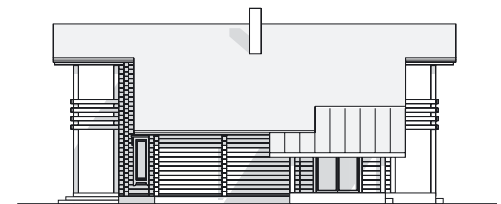
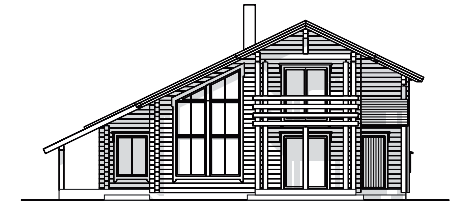
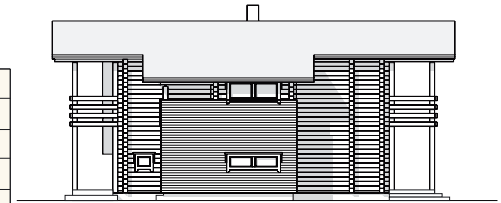
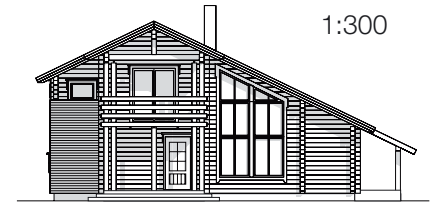




Kontio Arcticus

Ground floor 83.0 m², Terrace 32.9 m²

First floor 49.0 m², Balcony 19.4 m²





Kontio Monarda

Ground floor 93.2 m², Terrace 56.6 m²

First floor 50.0 m²

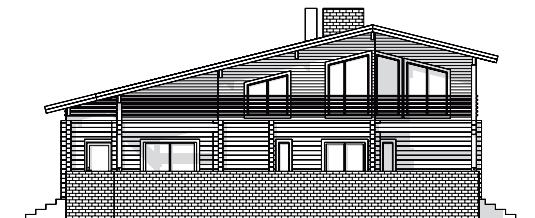
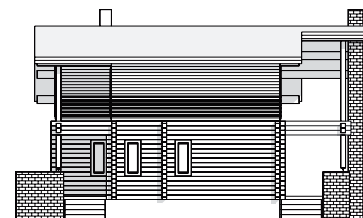
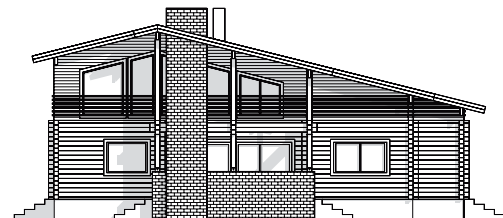
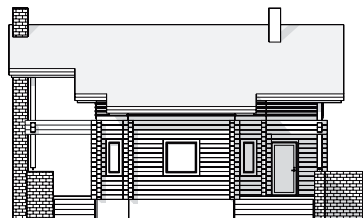
Ground floor 1:150



First floor 1:150



1:300







Kontio Paris

Ground floor 93.9 m² , Terrace 5.4 m²

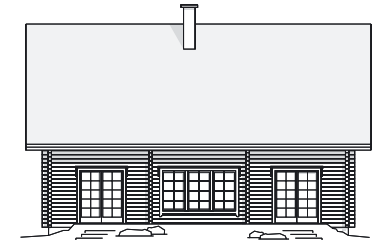
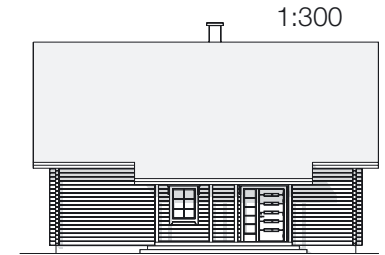
First floor 84.8 m²



Ground floor 1:150



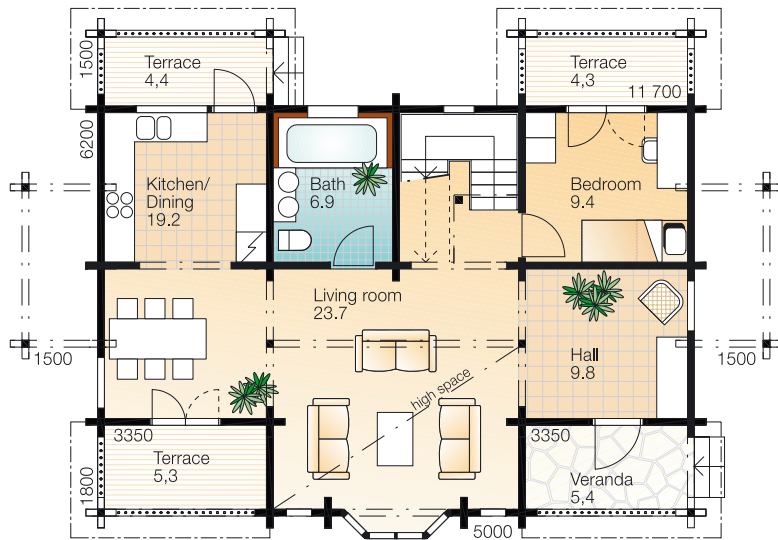
First floor 1:150



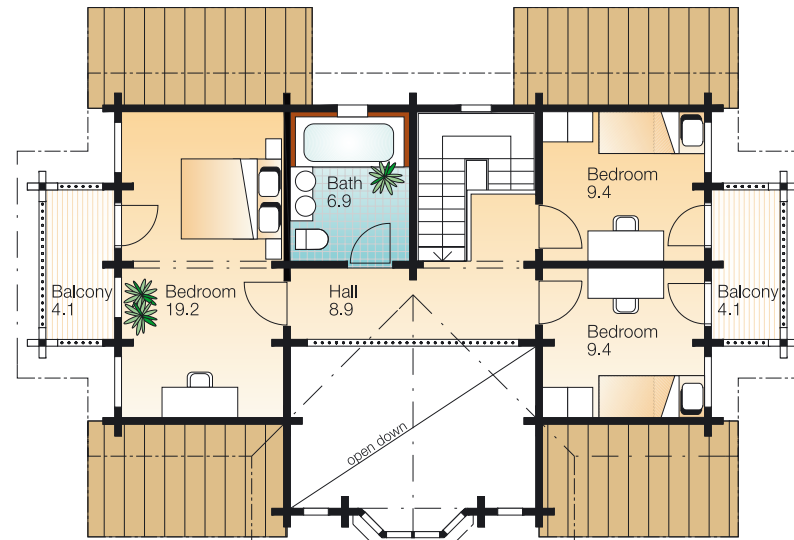
Kontio Humulus

Ground floor 69.0 m² , Terrace 19.2 m²

First floor 58.6 m² , Balcony 8.0 m²



Ground floor 1:150



First floor 1:150

1:300







Kontio Grimmia 1

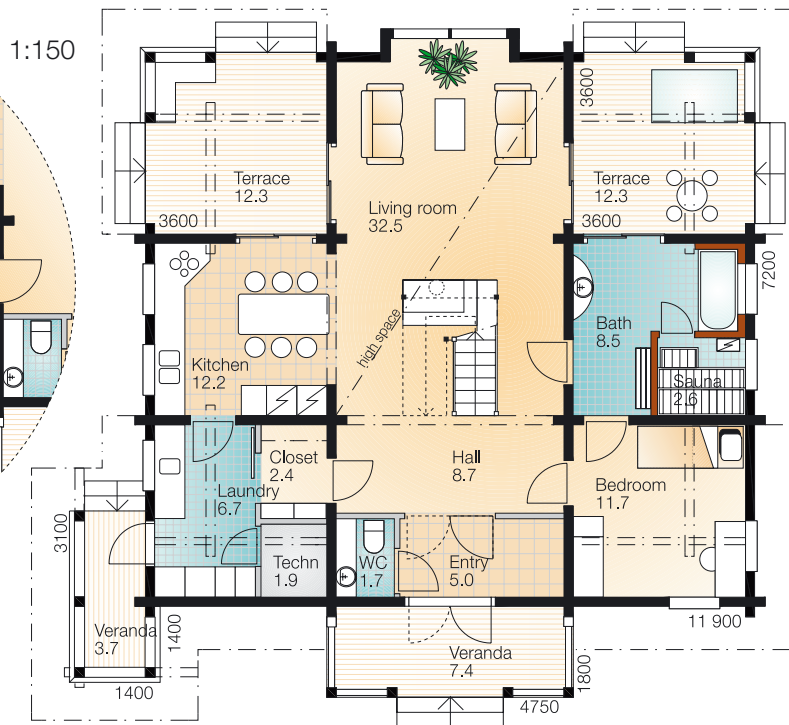
Ground floor 91.3 m² , Terrace 35.6 m²

First floor 48.2 m² , Balcony 10.0 m²

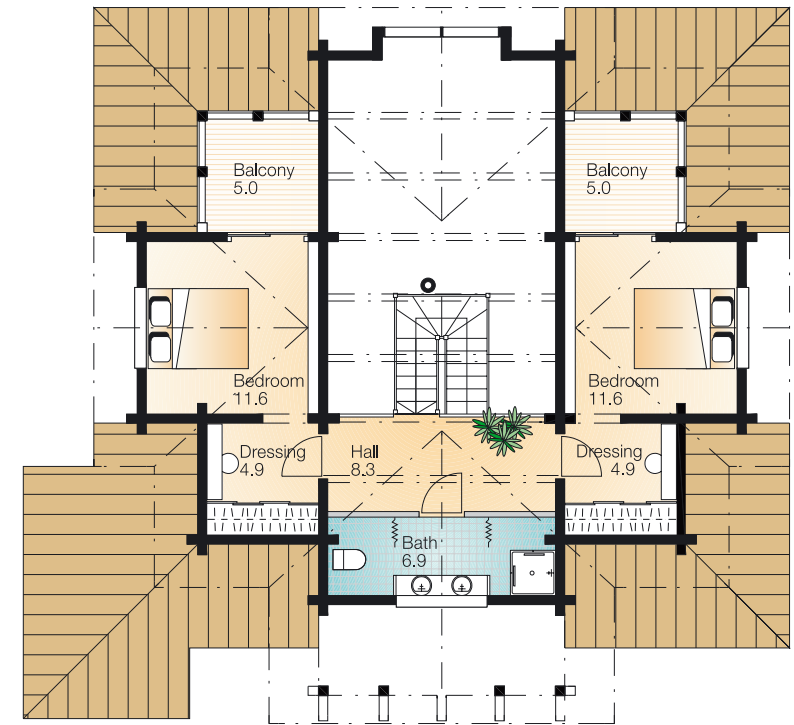
1:300



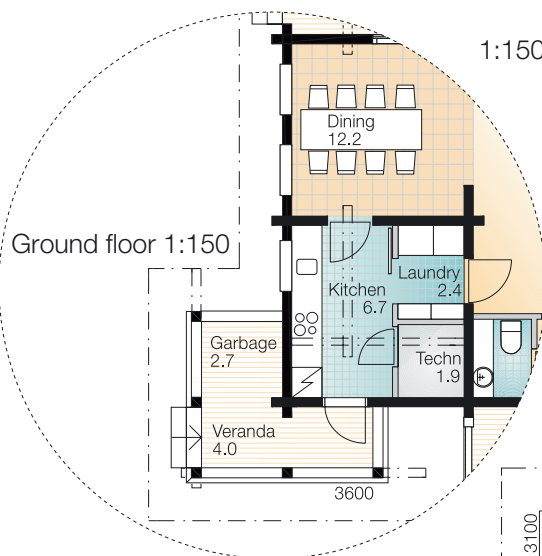
Ground floor 1:150



First floor 1:150



Ground floor 1:150



Kontio Grimmia 2

Ground floor 91.3 m² , Terrace 38.5 m²

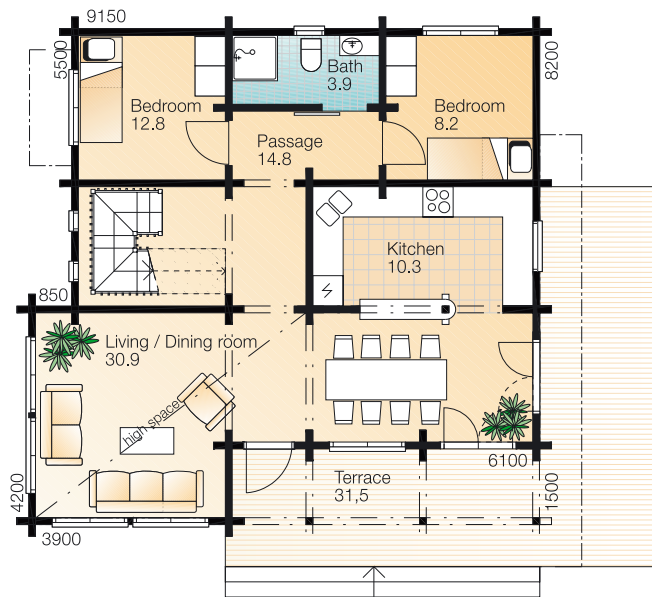
First floor 48.2 m² , Balcony 10.0 m²



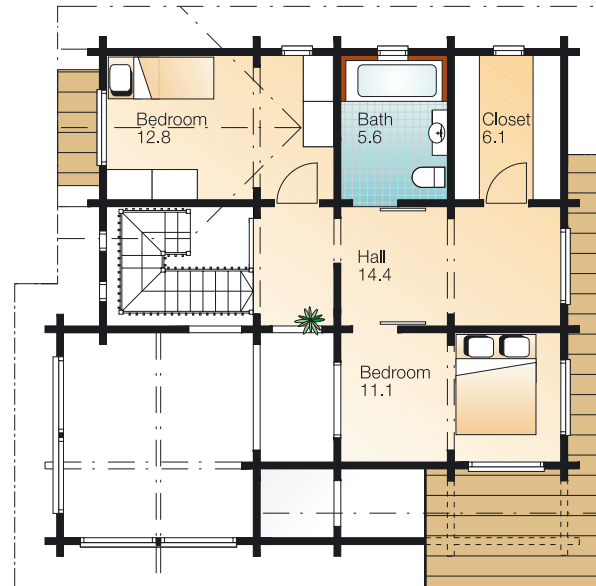
Kontio Cirsium

Ground floor 80.1 m², Terrace 31.5 m²

First floor 60.5 m²



Ground floor 1:150



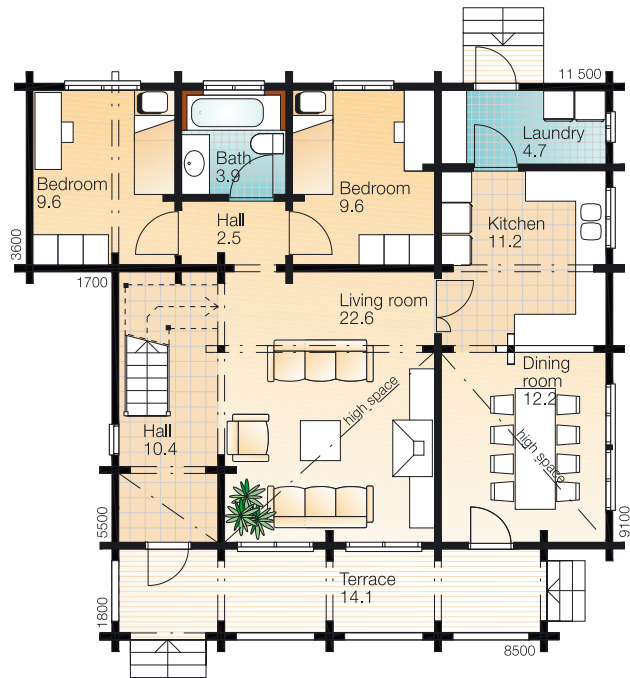
First floor 1:150



Kontio Graphis

Ground floor 86.7 m², Terrace 14.1 m²

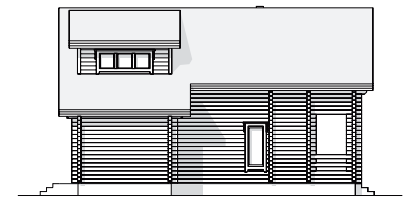
First floor 36.7 m²



Ground floor 1:150



First floor 1:150

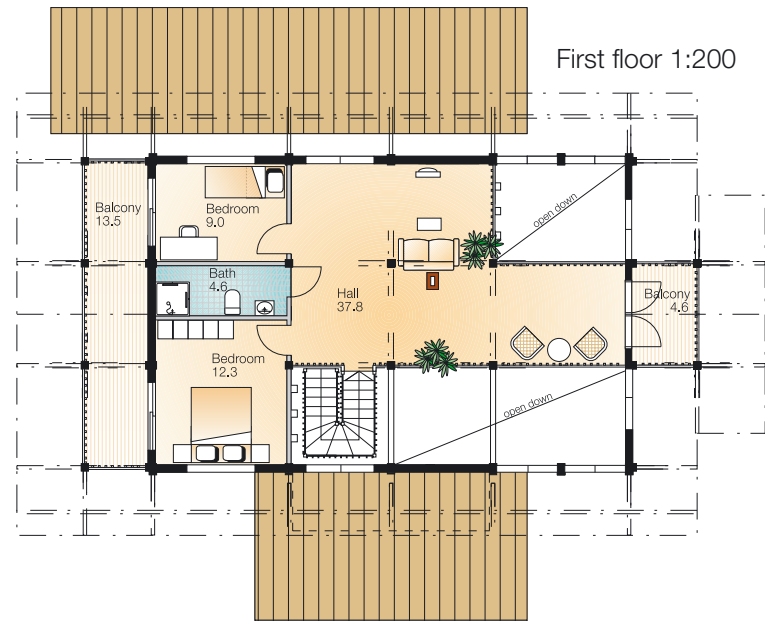
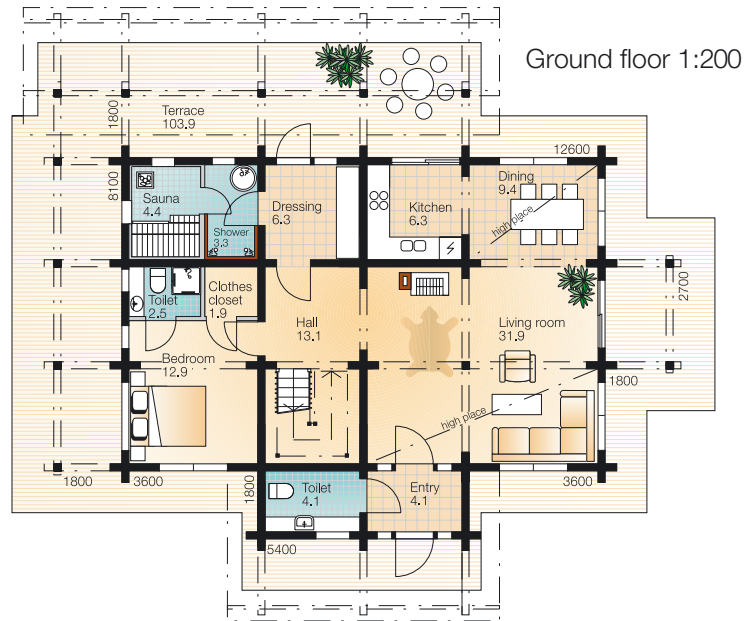




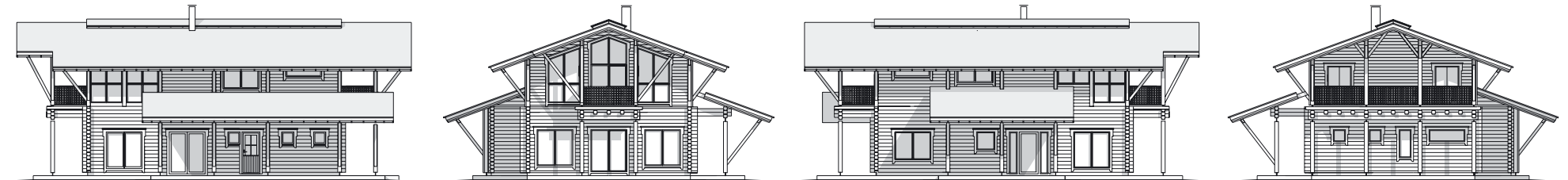
Kontio Mentha

Ground floor 100.2 m² , Terrace 104.0 m²

First floor 63.7 m² , Balcony 18.1 m²



1:300

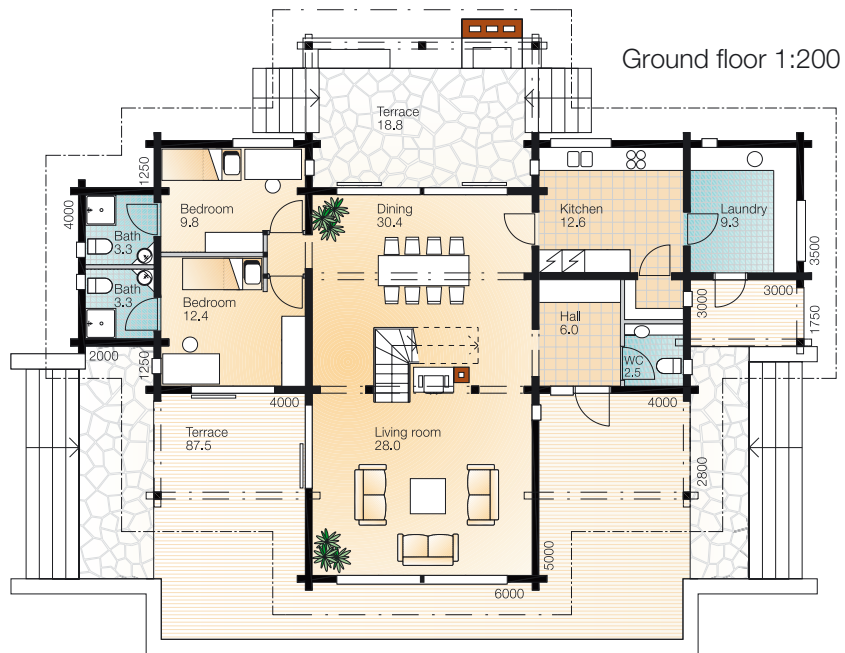




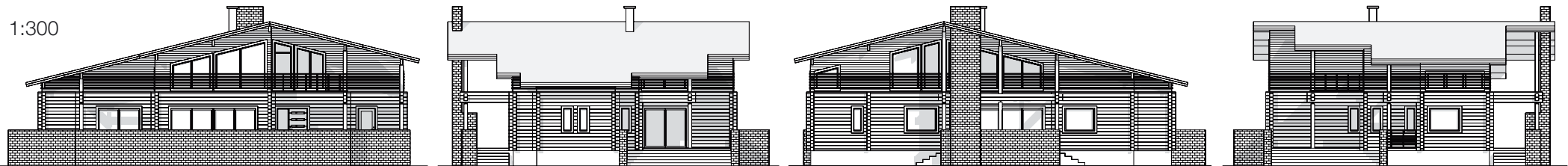
Kontio Brassica

Ground floor 119.2 m², Terrace 106.3 m²

First floor 57.4 m², Balcony 10.6 m²



1:300

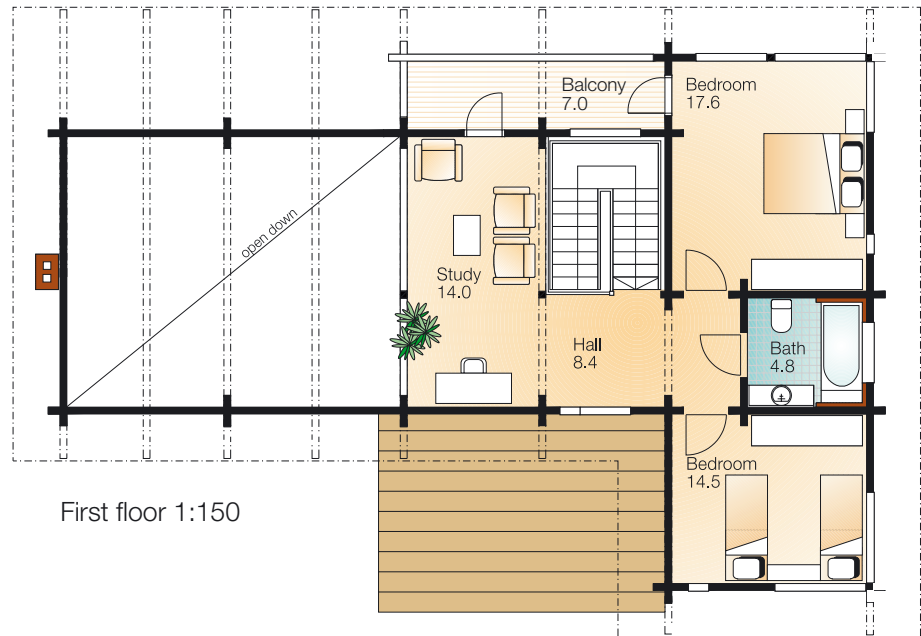
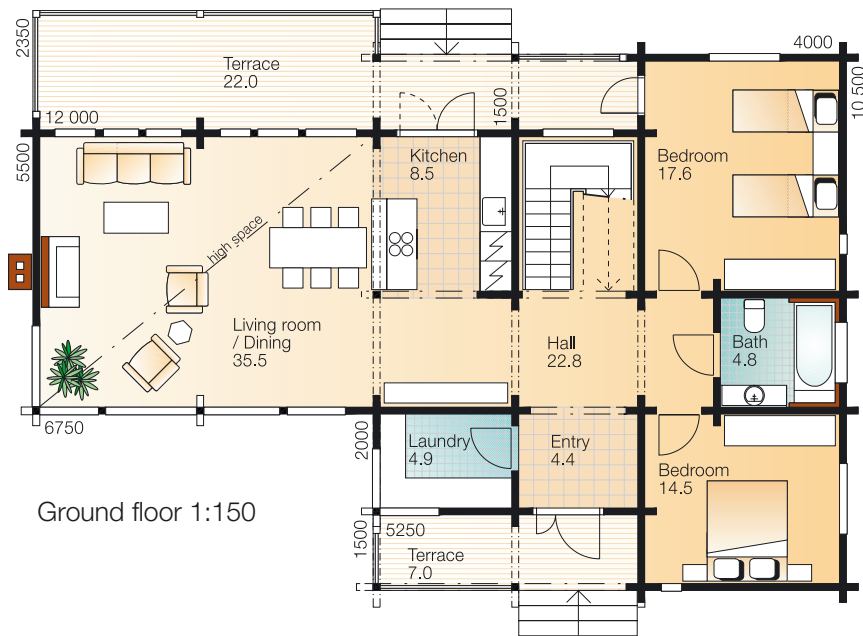




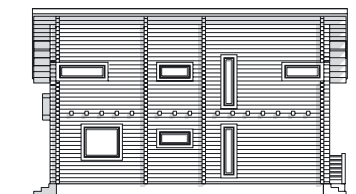
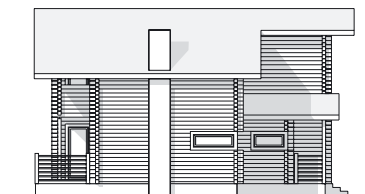
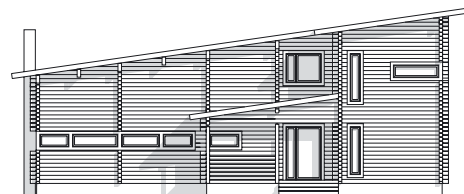
Kontio Calypso

Ground floor 113.0 m² , Terrace 29.0 m²

First floor 59.3 m² , Balcony 7.0 m²



1:300



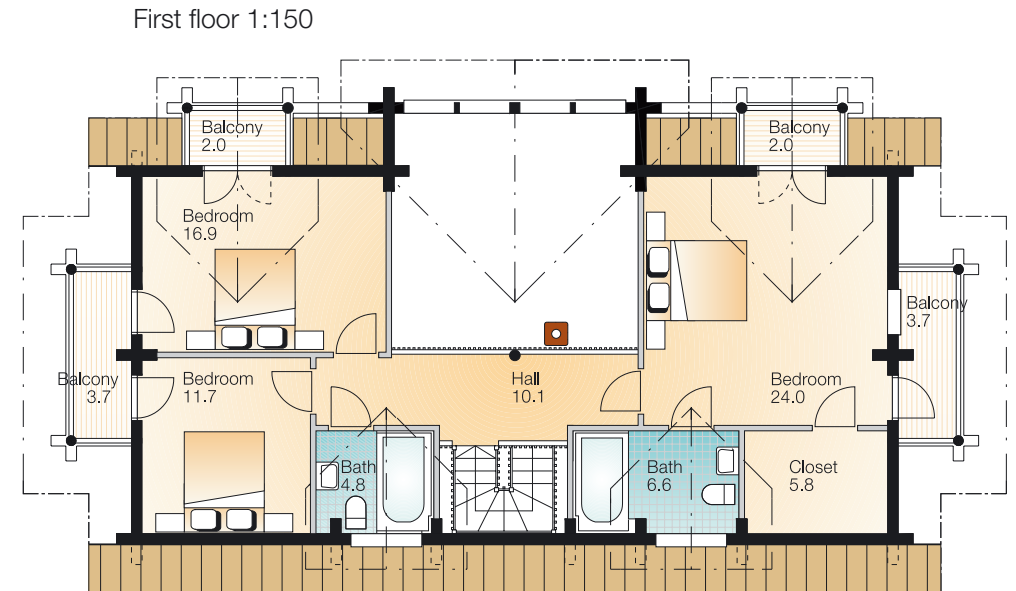
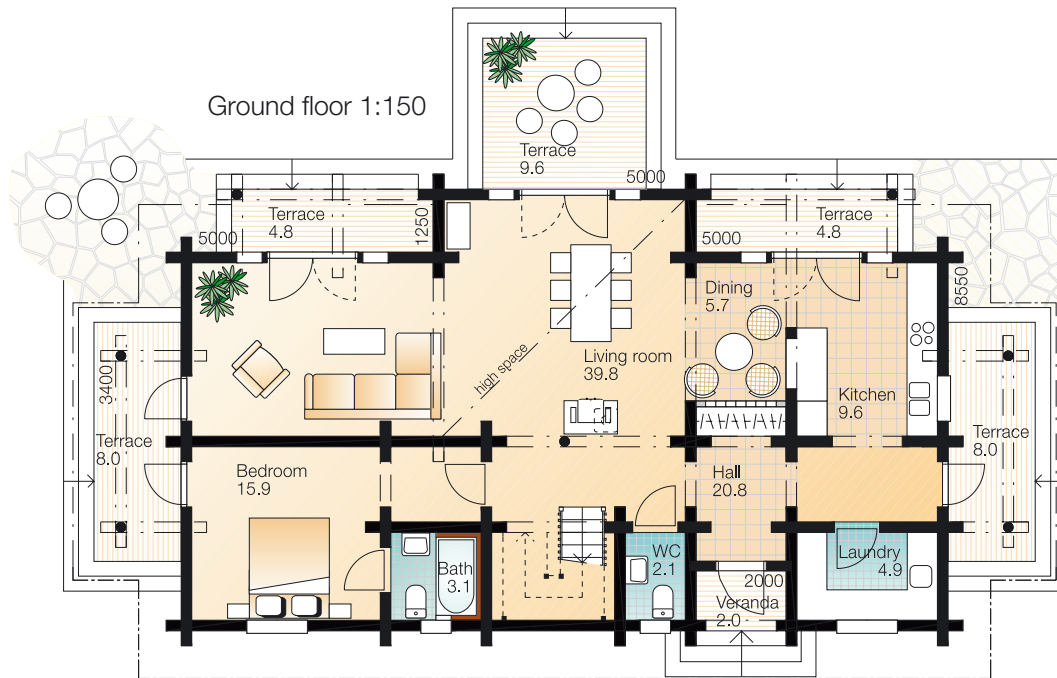




Kontio Valeriana

Ground floor 98.4 m² , Terrace 37.2 m²

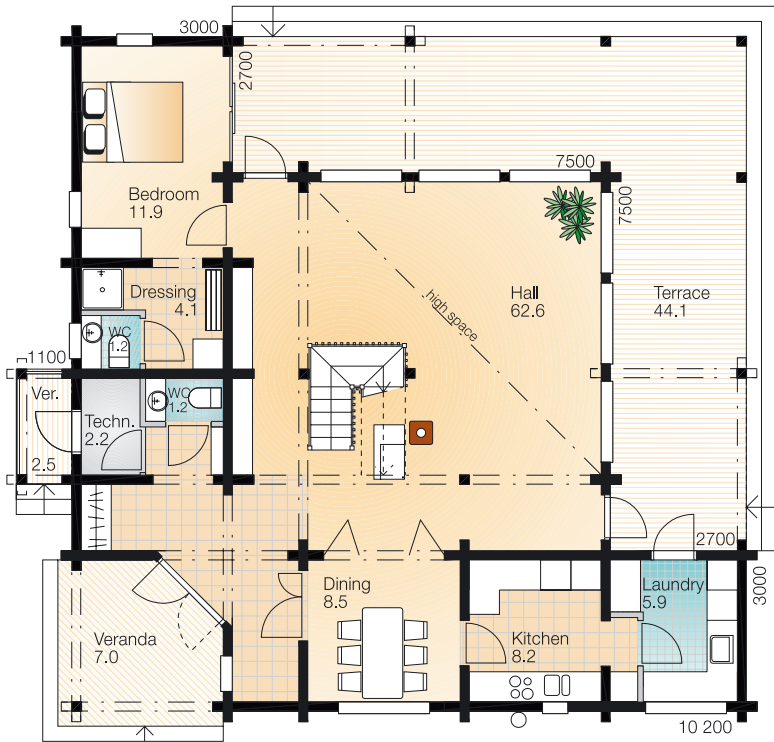
First floor 81.4 m² , Balcony 11.4 m²



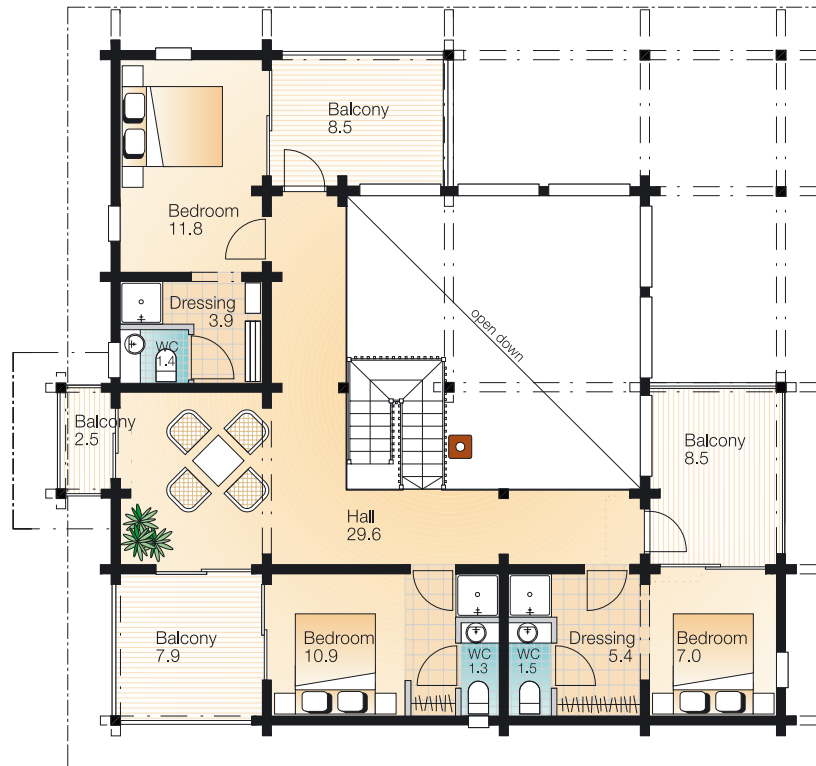
Kontio Laminaria

Ground floor 108.0 m² , Terrace 54.9 m²

First floor 73.6 m², Balcony 24.9 m²

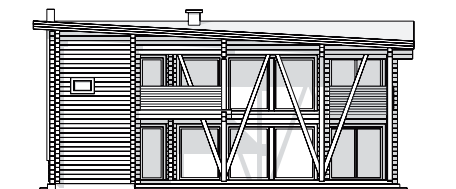
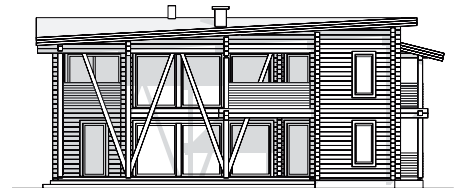
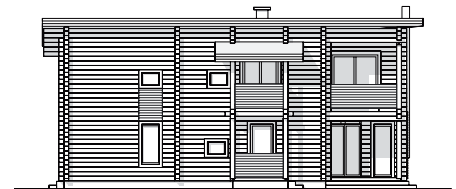
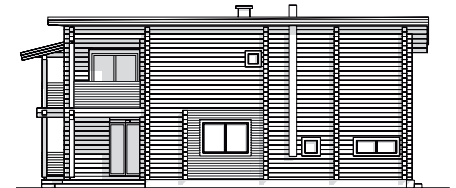


Ground floor 1:150



First floor 1:150

1:300



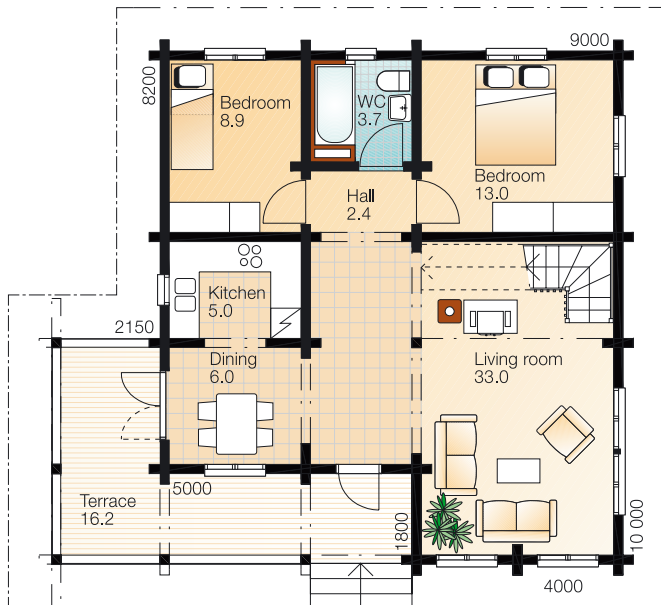


Kontio Marsilea

Ground floor 72.0 m² , Terrace 16.2 m²

First floor 65.3 m² , Balcony 7.7 m²

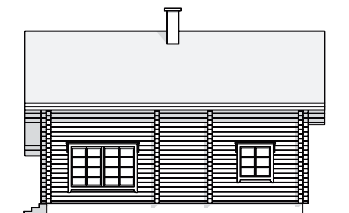
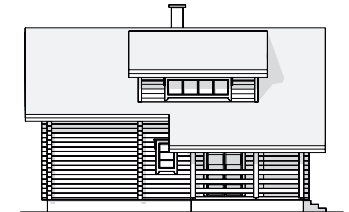
Ground floor 1:150



First floor 1:150



1:300



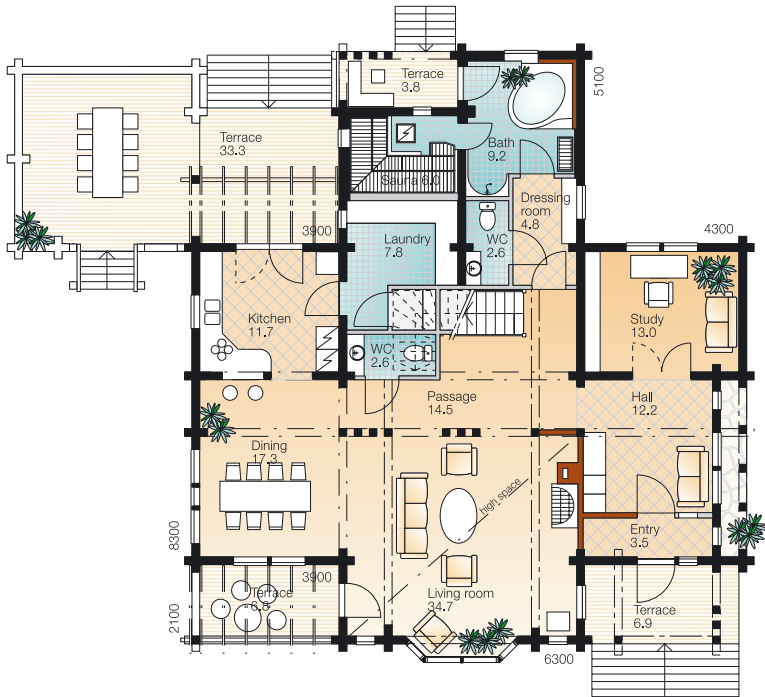




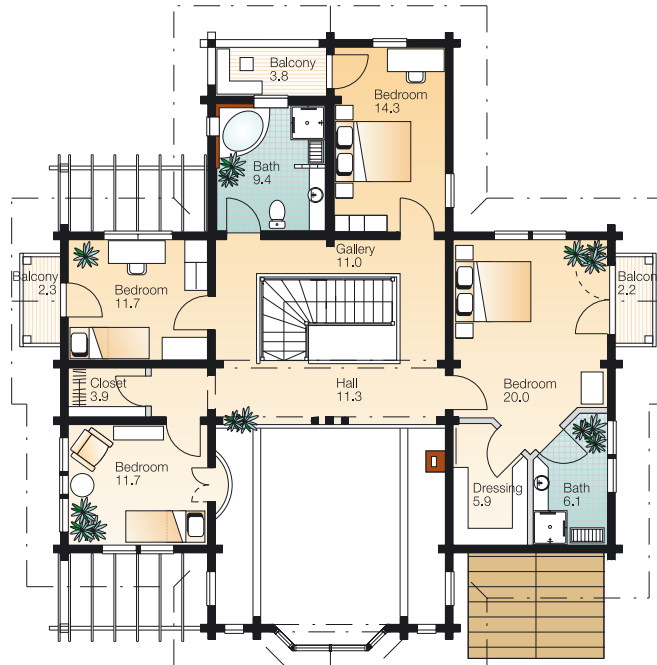
Kontio Ulmus

Ground floor 142.1 m² , Terrace 52.1 m²

First floor 104.0 m² , Balcony 8.3 m²



Ground floor 1:200



First floor 1:200

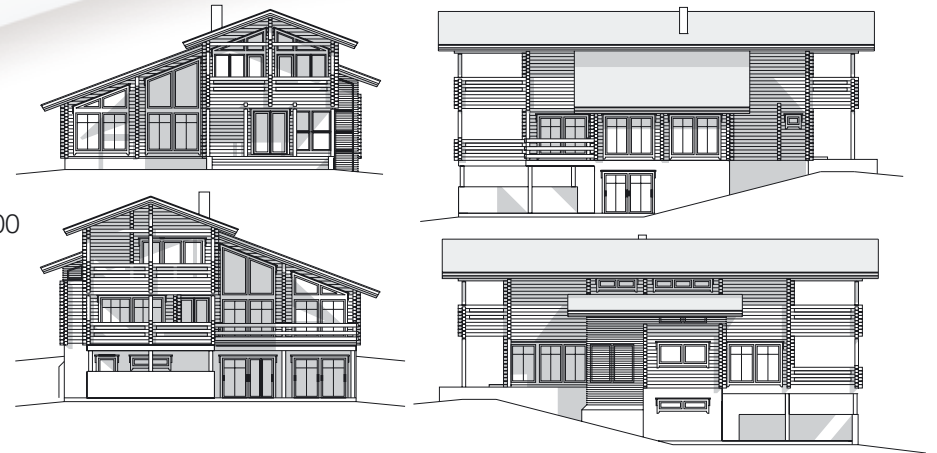


Kontio Mertensia

Ground floor 132.0 m² , Terrace 27.0 m²

First floor 90.0 m² , Balcony 96.4 m²

Cellar 108.0 m² , Carport 46.1 m²



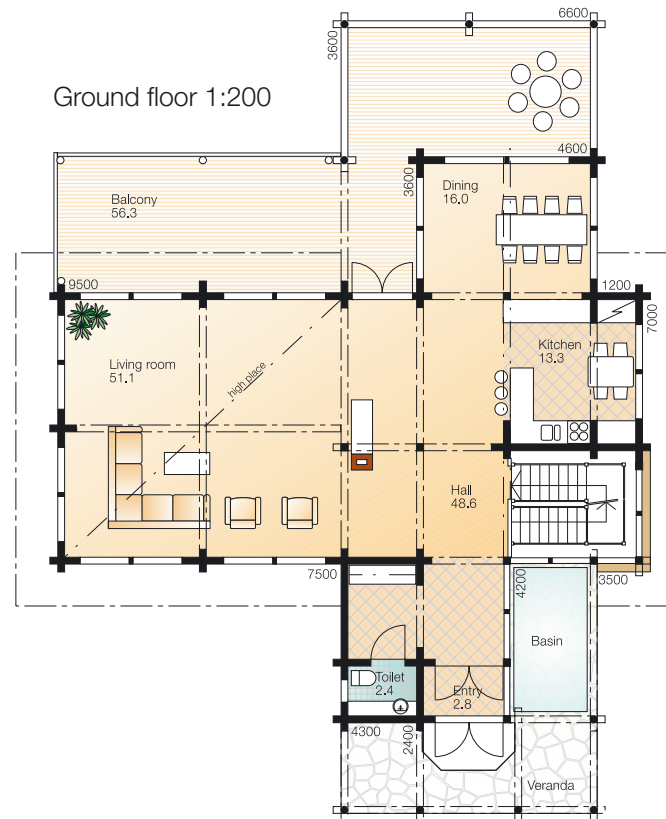
1:400

Cellar 1:200

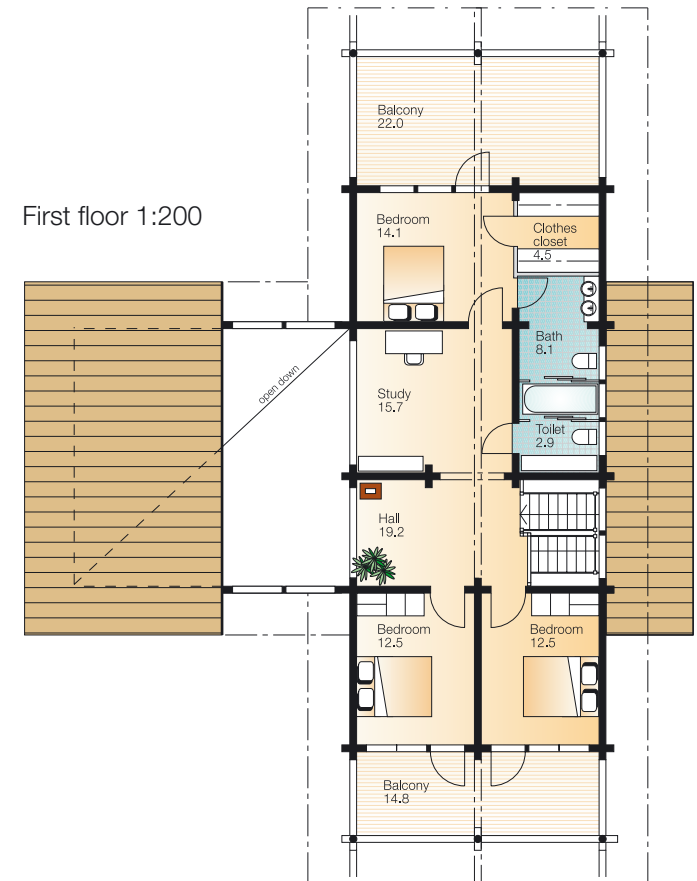


1:200

Ground floor 1:200



First floor 1:200



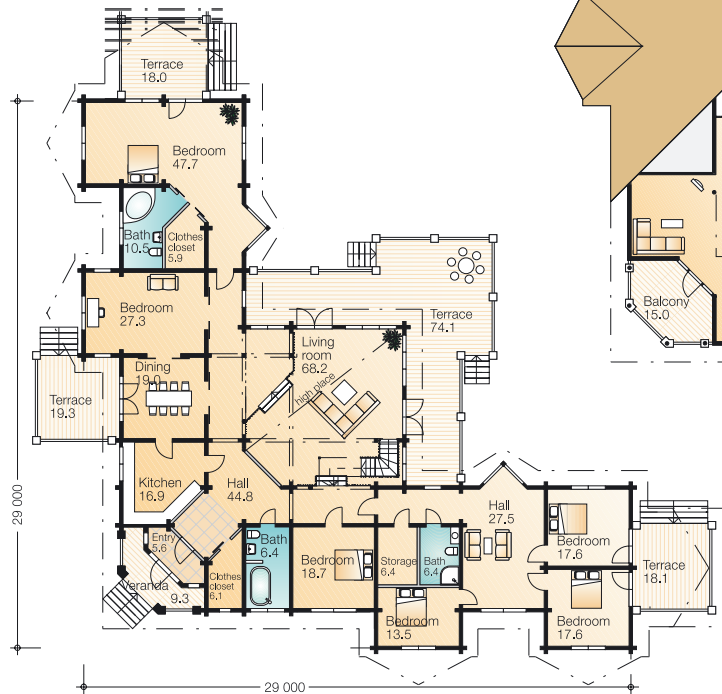


Kontio Carlina

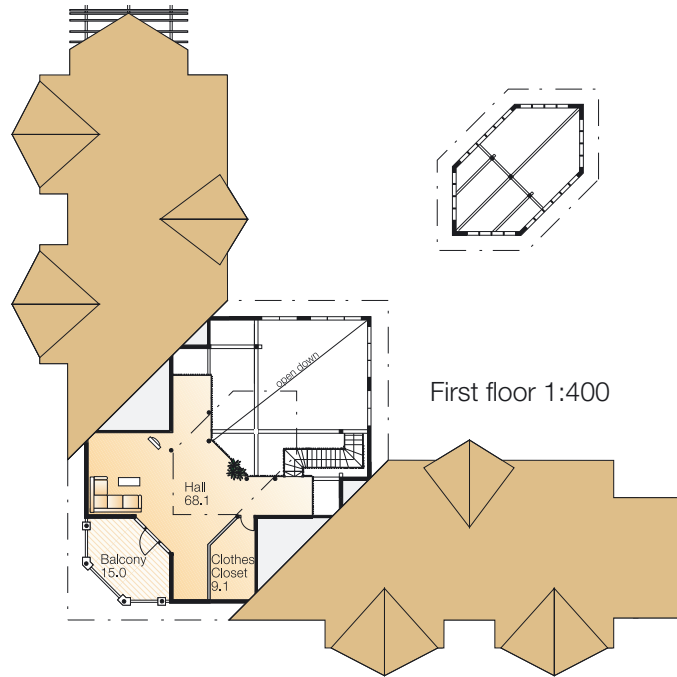
Ground floor 347.8 m², Terrace 138.8 m²

First floor 71.8 m², Balcony 15.0 m²

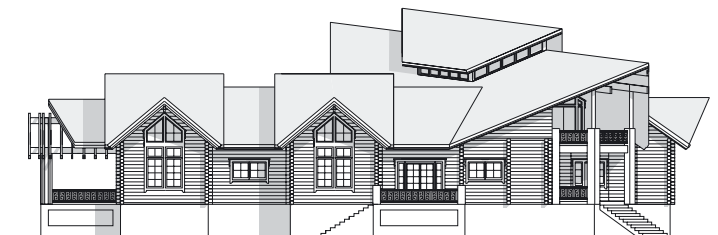
Ground floor 1:400



First floor 1:400



1:400





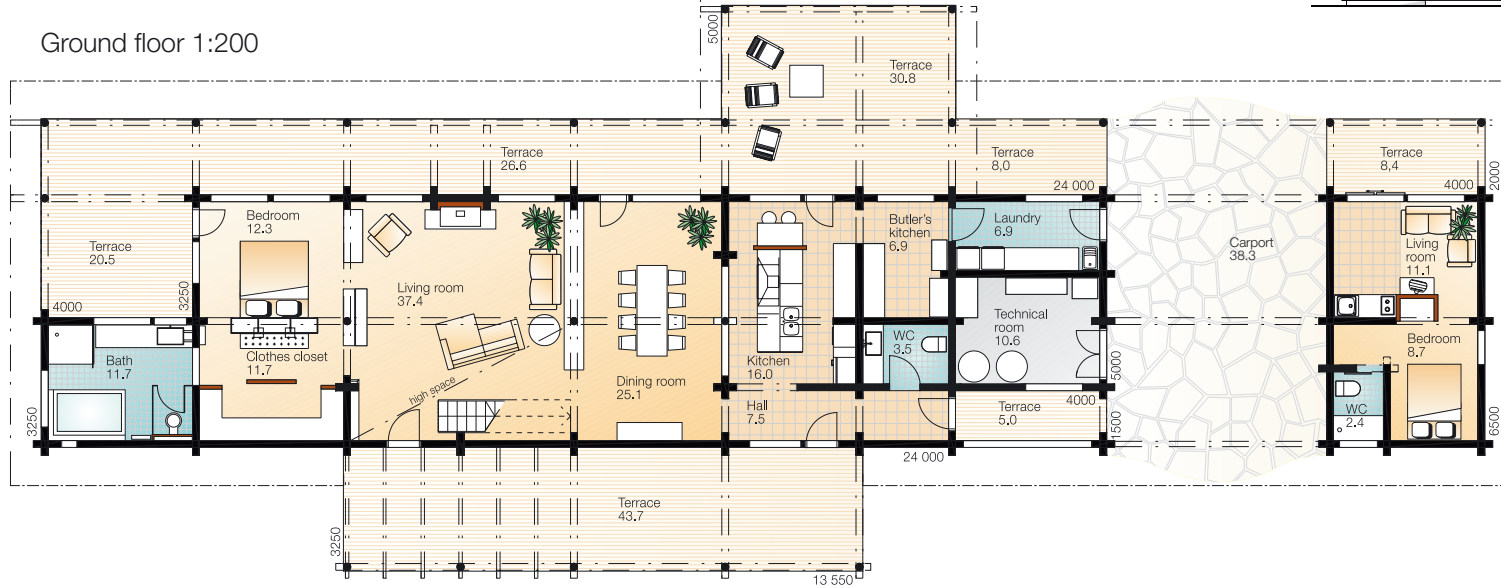
Kontio Normandina

Ground floor 164.3 m², Terrace 143.0 m²

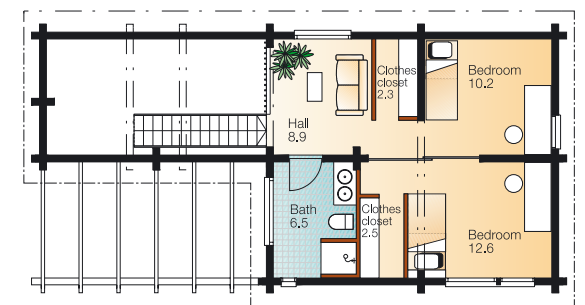
First floor 40.7 m², Carport 38.3 m²



Ground floor 1:200



First floor 1:200





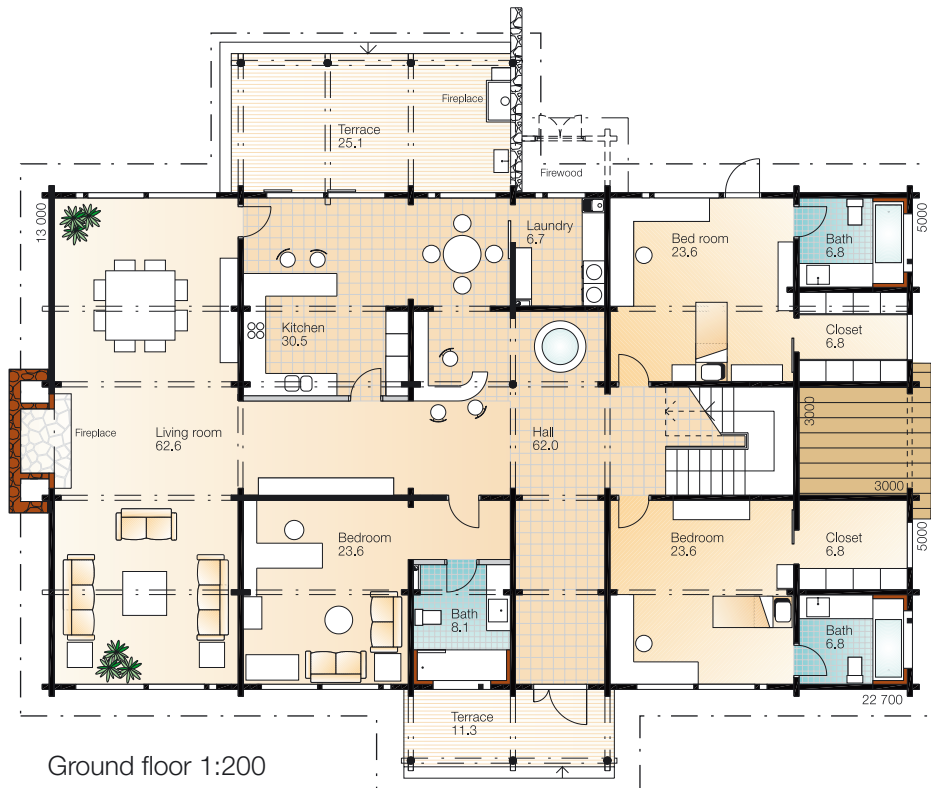
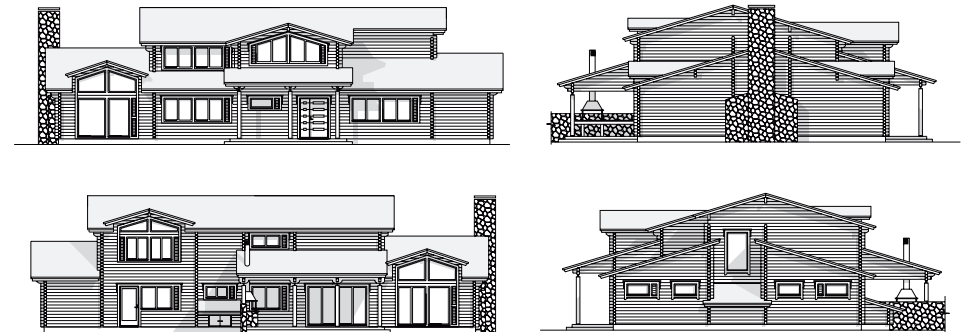


Kontio Nitella

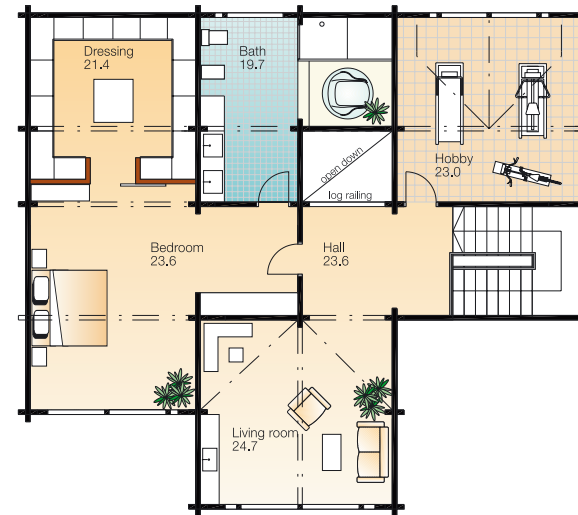
Ground floor 269.8 m², Terrace 36.4 m²

First floor 123.8 m²

1:400



Ground floor 1:200



First floor 1:200

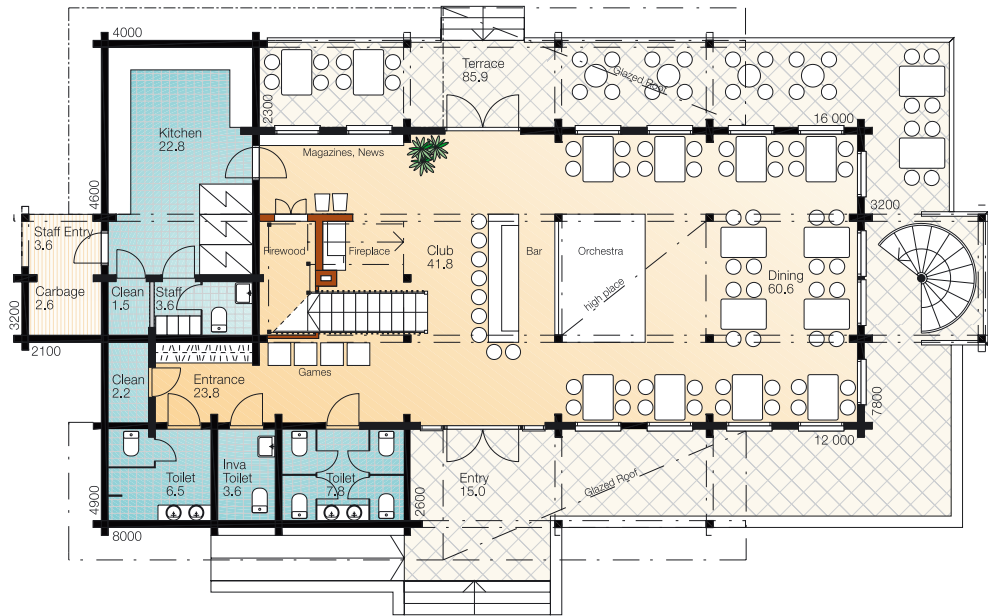
Kontio Restaurant

Ground floor 174.2 m², Terrace 104.5 m²

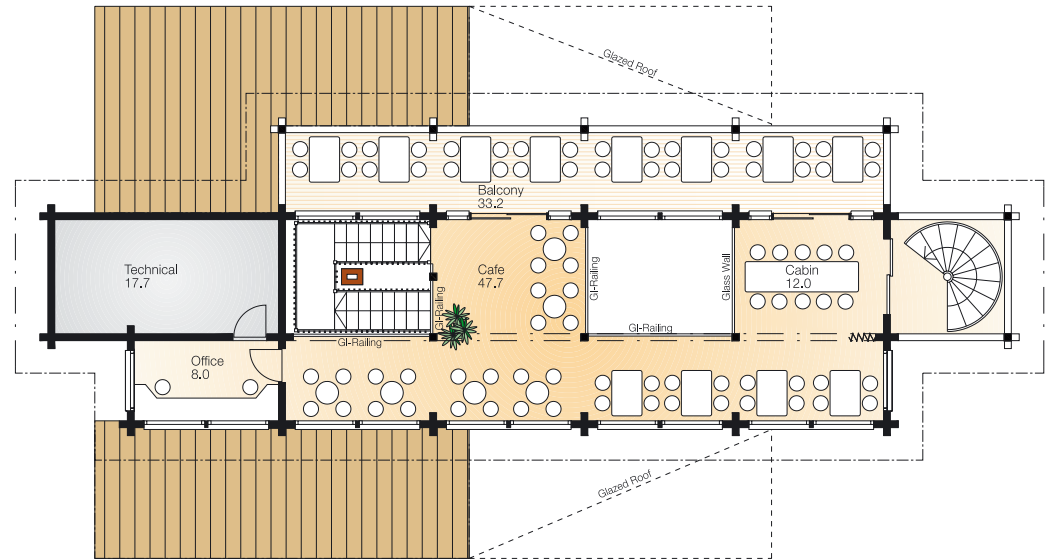
First floor 67.7 m², Balcony 33.2 m²

Technical 17.7 m², Carbage 2.6 m²

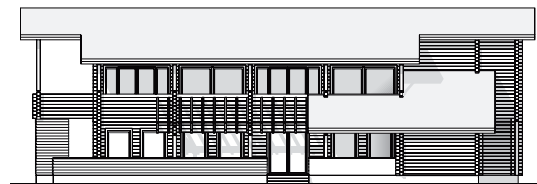
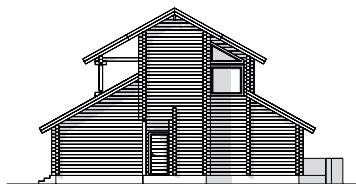
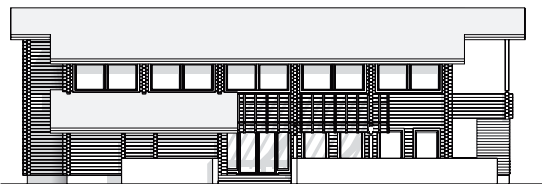
Ground floor 1:200



First floor 1:200



1:400







The renaissance of authenticity

Old values have a future

The log house has not lost any of its attraction over the centuries, quite the contrary. Focused on combining a long building tradition with a modern spirit and technical, architectural and environmental advances, Kontio sets the trends with its houses, linking aesthetics and engineering know-how to warmth, healthy living and cosiness.

Tradition counts

Man has used wood as a building material for thousands of years. At a time when transport was limited, wood had the overwhelming advantage of being available “within arm’s reach” practically anywhere in the world. Besides, wood was easy to work; to build a house you only needed simple tools like axe, saw and crowbar. Therefore, stately buildings could be made of wood even in the most deserted locations.





Kontio interior styles

Cosy cottages

Natural wood plays a significant role in the traditional furnishing of cottages. The beautiful surface of wood adds an inimitable and individual touch to the interior, and the warm shades of wood naturally blend into other furnishing materials.





Living rooms

A modern log house can also be furnished in a novel way. Symmetric shapes, coatings and the play of colours provide a way of creating a modern interior style that fits in with the special characteristics of a log house. A thrilling play of natural light, fabrics, furniture, different kinds of floor materials and luminaires can be used to create fascinating interiors. High and spacious rooms with plenty of light are especially characteristic of log houses.





Living rooms with a fireplace

The warming blaze of the fireplace is an integral part of living in a log house. The fireplace is the heart of the house, not only as a source of warmth but also as a focal part of interior decoration. Creativity and courage are the only limits to implementing magnificent and individual solutions centred around the fireplace.





Dining

Invite friends to dinner, or set the table for the family. In a log house, dining together is a pleasant and unique experience. The atmosphere in a log house adds a special charm to the dining room.





Kitchens

The functioning and appearance of the kitchen are an important part of comfortable living. Modern building technology provides a wide array of options for designing and implementing kitchen solutions. By combining new and old items and different surfaces and materials – wood, stone, steel and glass – you create an individual kitchen where the whole family likes to spend time and work.





Bedrooms, studies

Genuine wood brings a peaceful ambiance to the evening after a long day. Therefore, make plenty of space in the bedroom and shared studies. Let genuine wood lend a natural touch to the room. Add colour with textiles and furniture, and come up with exciting details for a personal touch. In other words: make it your home!



Architect's Office DIA - Moscow





Saunas, bathrooms

Sanitary facilities receive a lot of attention in modern living. A swimming-pool and sauna add luxury to the healthy way of living. Natural wood offers a warm atmosphere in the sanitary facilities as well.





Architect's Office DIA - Moscow



Architect's Office DIA - Moscow



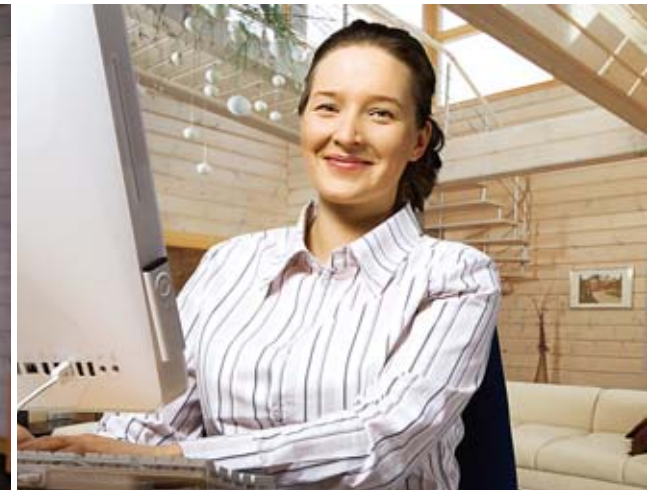


Working in a Kontio log house

Modern life is hectic and stressful, and the need for harmony, rest and safety increases.

Living and working in a Kontio log house can be a good relief.

The pleasant atmosphere generated by massive polar pine has a favourable impact on performance and health. This is an inspiring environment to work and relax in.





Natural log

Genuine wood has always fascinated man. Traditions spanning thousands of years and the variety of cultural shades have left their marks on log construction. Still, natural log has held out in the middle of changes in construction cultures.





The best there is

Close-grained northern pine is the best material for building.

Pine grows on a dry and nutrient-poor soil, such as sand and morainic soils, but it also thrives in a stony and rocky ground.

Its growth zone covers the whole northern hemisphere.

This arctic wood species needs plenty of light and clean air in order to grow healthily. Northern Finland offers all these geological and climatic characteristics better than any other region in the world.

Kontio only uses genuine northern pine in its buildings.

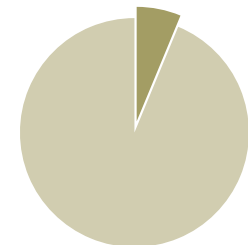


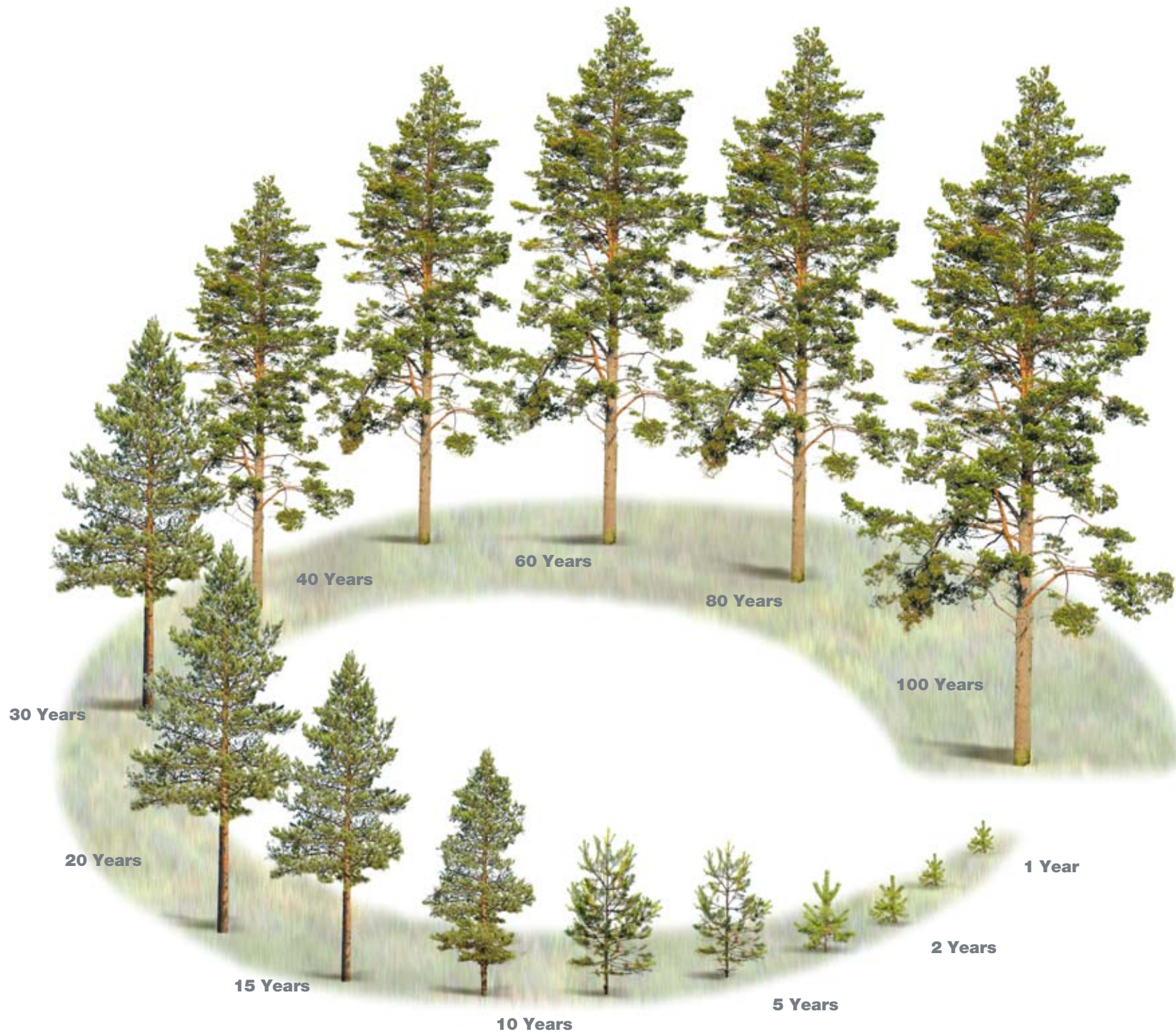
The coniferous forest zone covers a wide area of the northern hemisphere.



Trees grow slowly in the north, resulting in closer grained wood.

In timber exploitation for a Kontio log house, only 1/15 of energy is needed in comparison to that needed for a comparable house built in a conventional building style





Forestry in Finland



Forest preservation is taken very seriously in Finland. Caution is applied in cutting down trees, and deforestation furthering erosion is out of the question. Emphasis is put on assuring supply by natural rejuvenation and afforestation with almost 150 million seedlings per year. In raw material sourcing, Kontio uses forests of to the Finnish State Forest Enterprise which have obtained the PEFC label (Programme for the Endorsement of Forest Certification).



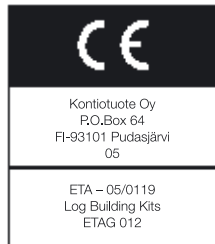


Kontio – Means quality

The logo of KONTIO is a guarantee of high quality log construction.

The triple AAA rating issued by D&B reflects the financial strength and reliability of the company.

CE quality certificate for Kontio log houses.



In addition to several patents and certificates, Kontio has received the CE certificate, proving that Kontio houses comply with the demands of the European technical approval ETA-05/0119. The certificate is valid throughout Europe and ensures the high quality of Kontio products.

The certificate is also helpful for obtaining financing, insurance and permits needed in building.

Kontio’s certificates.

Kontio resellers have a certificate showing that they can act as official Kontio resellers in their own area. They have attended training arranged by Kontio and have received an Introductory Training Certificate.





Kontio factory and production

Kontio is the biggest log house factory in the world

Our modern plant, manages the whole manufacturing process from round timber to complete log houses. Automated production lines guarantee uniform production quality.

State-of-art wood handling technology is used in the production process, enabling maximal utilisation of the raw material as well as minimal energy consumption. The Quality Assurance Staff carefully inspects each production phase.

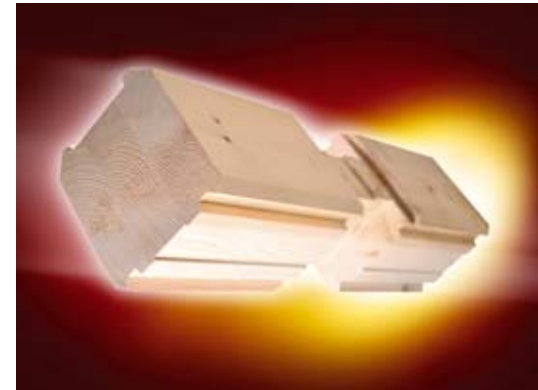
Exporting log buildings to many different climatic conditions and construction traditions has set great for product development. Our Product Development Team continuously co-operates with the Resellers all over the world.





Drying of the log

Drying takes place in specially developed drying rooms. There is a separate computer-controlled drying programme for each timber size. Log is dried to a moisture of 18% to 25%, after which it is worked to its final dimensions. Moisture content meets the “Quality requirements for log buildings” and is controlled in accordance with the ETA approval. In this way, Kontio guarantees a high quality of building, long age and the preservation of the value of its log buildings.





Laminated Log, pine



205 mm

180 mm



135 mm

95 mm

Rectangular Log, pine



120 mm

95 mm

Round Log, pine



230 mm
laminated

210 mm



170 mm

150 mm

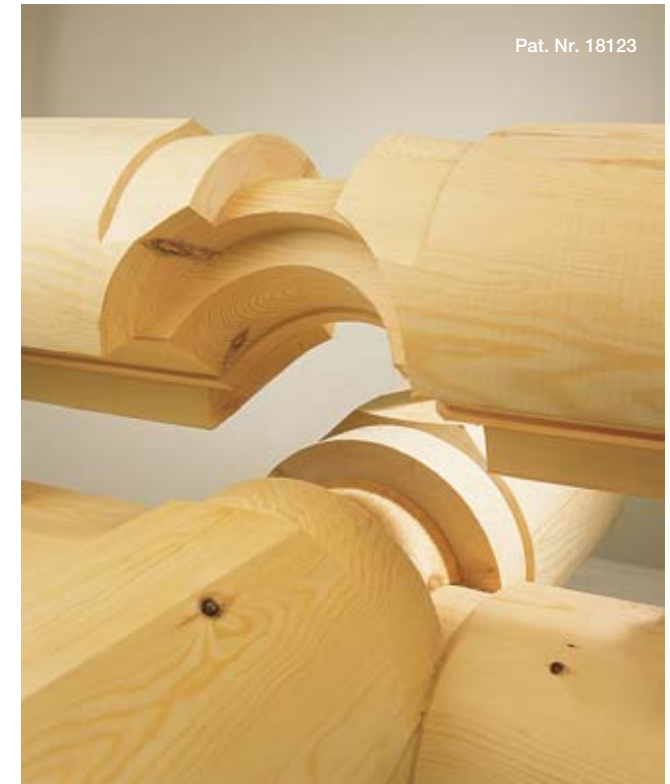
Log assortment

Laminated Log Is the Classical Choice

Laminated log and rectangular log are classical in shape: the rectangular shape is well suited to both traditional and modern log building architecture. With these logs, you get an elegant, timeless and clear-cut building. Laminated log has been developed on the basis of rectangular log, and the look is similar. In laminated logs, wood stretches and contracts to lesser degree, and glueing allows the logs to be made thicker. King-size laminated structures make stately log buildings, and there is no need for extra wall insulation, even in Arctic conditions. Rectangular and laminated logs produce an evenly thick, breathing wall structure that is dependable and functional.

Round Log

Impressive round log stands out in the surroundings. With round log, Kontiotuote Oy's customers have implemented luxurious building projects in Asia and Europe. Kontiotuote Oy have improved round log design to make it a suitable wall material for the most demanding projects. In Japan, buildings are put to the test not only by earthquakes, but also by violent winds and rains, the typhoons. Heavy snow in the Alps, bitter frosts in Lapland, and heat and humidity in Thailand put great demands for the wall construction. The locked corner joint for round logs, developed and patented by Kontiotuote Oy, has made it possible to deliver log buildings to these extreme conditions.



Locked corner joint for round logs protects the home against the cold and shelters it from wind and rain.



Is this your dream?

Genuine feel afforded by wood, magnificent architecture and individual touch to living. That is Kontio. Modern architecture combining wood, stone and glass produces a unique home.





Need more information?
Visit www.kontio.com

Acquaint yourself with Kontio over the Internet. You will get the newest information on log construction, including its history, development, manufacturing and architecture. Kontio web site offers a massive information package to a log house builder. Our site also presents the newest log house models and gives a lot of ideas for modern living.





KONTIO
L O G H O U S E S

Kontiotuote Oy

P.O. Box 64, FI-93101
Pudasjärvi, Finland

Tel. +358 (0)20 770 7400
Fax +358 (0)20 770 7520
info@kontio.fi

www.kontio.com